



REPUBLIKA NG PILIPINAS
Republic of the Philippines
KAGAWARAN NG EDUKASYON
DEPARTMENT OF EDUCATION
DepEd Complex, Meralco Ave. Pasig City



Tanggapan ng Kalihim
Office of the Secretary

Direct Line: 633-72-08
E-mail: deped@pacific.net.ph
Website: <http://www.deped.gov.ph>

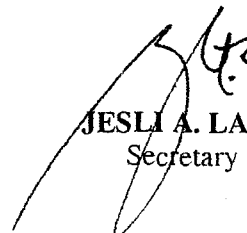
MAR 3 0 2009

DepED ORDER
No. **27**s. 2009

**PRESCRIBING THE DepED UNIFORMS FOR TEACHERS
AND NON-TEACHING PERSONNEL FOR SCHOOL YEARS 2009-2011**

To: Undersecretaries
Assistant Secretaries
Bureau Directors
Regional Directors
Directors of Services/Centers and Heads of Units
Schools Superintendents
Vocational Schools Superintendents/Administrators
Schools District Supervisors
Elementary/Secondary Schools Principals
All Concerned

1. Pursuant to DepED Order No. 76, s. 2008, as amended by DepED Order No. 14, s. 2009, enclosed are the designs and description of both the designs and textile materials that will be used for the DepED National Uniforms (Male and Female, Mondays and Tuesdays) for school years 2009-2011. The designs of the national uniforms may be viewed at the DepED website, www.deped.gov.ph for better appreciation of the designs, color and textile materials.
2. The full clothing and uniform allowance in the amount of Four Thousand Pesos (P4,000.00) shall be released in cash to the individual DepED official and employee.
3. The effectivity of wearing the prescribed uniforms shall be on the first day of school year 2009-2010.
4. For the guidance and compliance of all concerned.


JESLI A. LAPUS
Secretary

Encls.: As stated

Reference: DepED Order: Nos. 76, s. 2008 and 14, s. 2009

Allotment: 1- -(D.O. 50-97)

To be indicated in the Perpetual Index
under the following subjects:

EMPLOYEE
POLICY

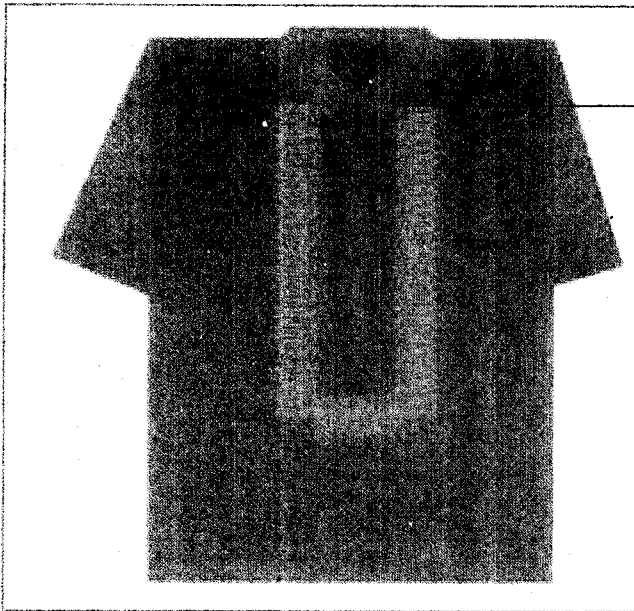
TEACHERS
UNIFORM

DepED NATIONAL UNIFORMS SYs 2009-2011

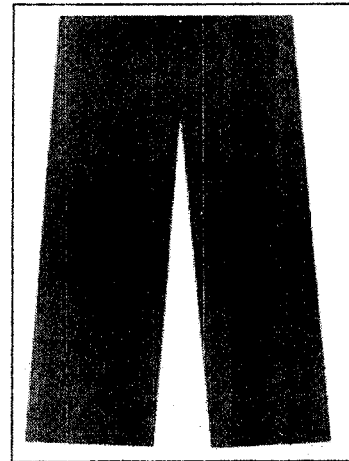
MALE – MONDAY

DESCRIPTION:

A classic midnight blue half open short sleeves with two side slit on both sides that is next to a modern suit. The linen fabric with distinct details, embroidered blue gray imported thread with four different kinds of stitches along the wonderfully embellished imported midnight blue buttons with silver ring makes a perfect understated but elegant look. The official DepED logo marked on the left collar is the highlight of the barong.



Embroidered DepED Logo
(Torch: length 1.5cm.)



Materials Used:

Teaching

Suki Yaki
100% polyester
3cm measuring distance
Measuring Distance
Ends/cm Pick/cm
31 31

Non-Teaching

Gusot Mayaman
100% ramie
#of Threads
Measuring Distance 3cmwarp
Ends/cm Pick/cm 5cm filling
27 23

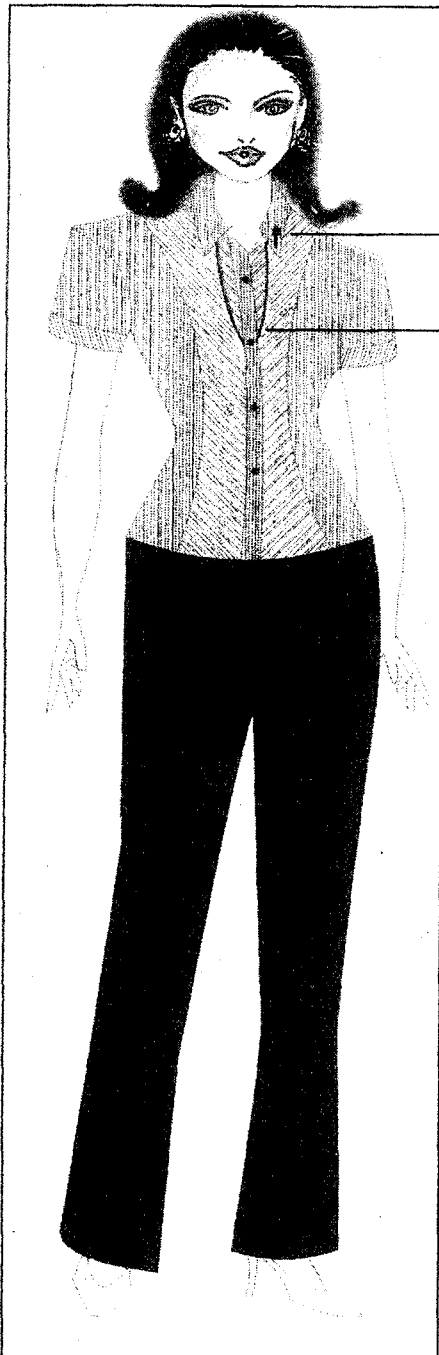
Materials Used:

St. Bernard
Limited Fine Wool
Color: Charcoal Grey

FEMALE - MONDAY

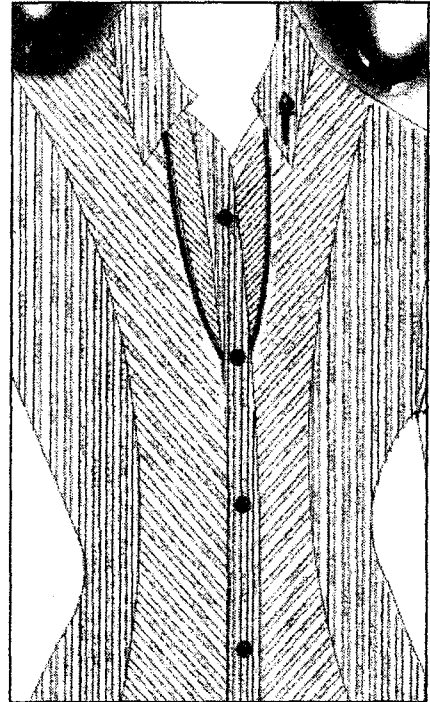
DESCRIPTION:

An ivory white tropical cool blouse with twin cerulean DepED corded stripes (Millicent 1020) accented with pleats on the body and direct embroidery of the torch on the left collar highlighted with buttons in official DepED hologram logo paired with slate gray Matt Lauren pants accented with casper torch.

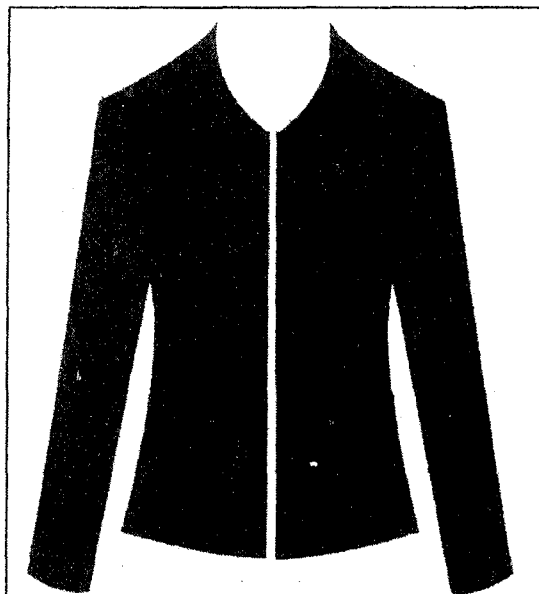


Embroidered DepED Logo
(Torch, Length - 1.5 cm.)

Pleats - fabric is the
same as the pants



Enlarged detail

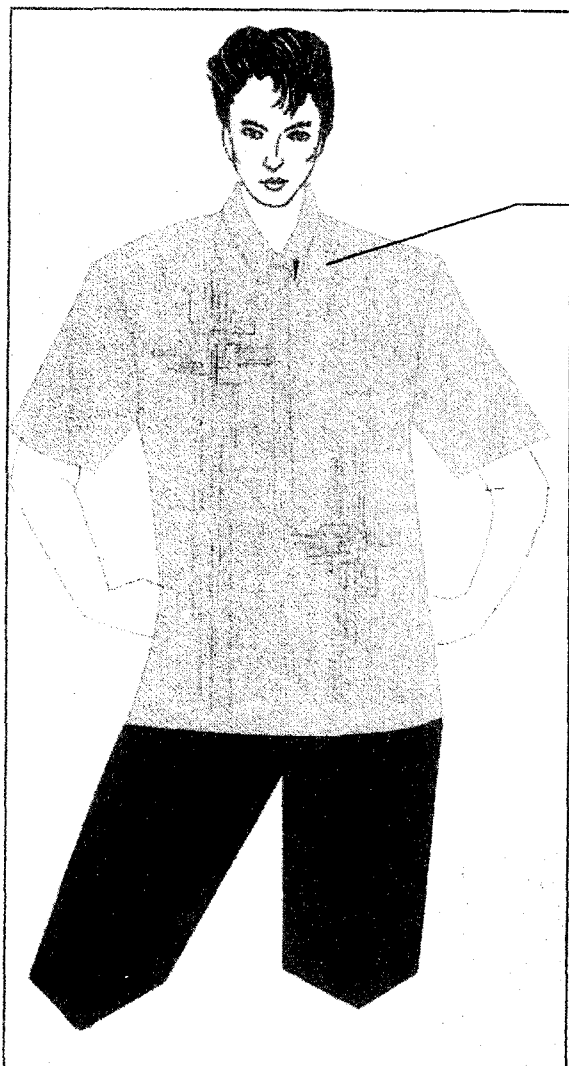


Blazer - Optional

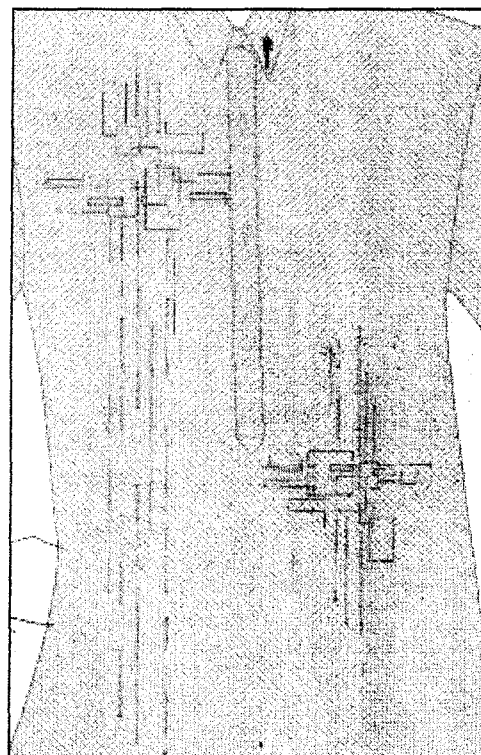
MALE - TUESDAY

DESCRIPTION:

A half-open apple green barong, Levin's 702, with official DepED reverse stamping accented with special multicolored embroideries and direct torch on the left collar, highlighted with buttons in official DepED hologram logo paired with golden brown pants with stripes in DepED colors, red and blue.



Embroidered DepED Logo
(Torch; length 1.5cm.)

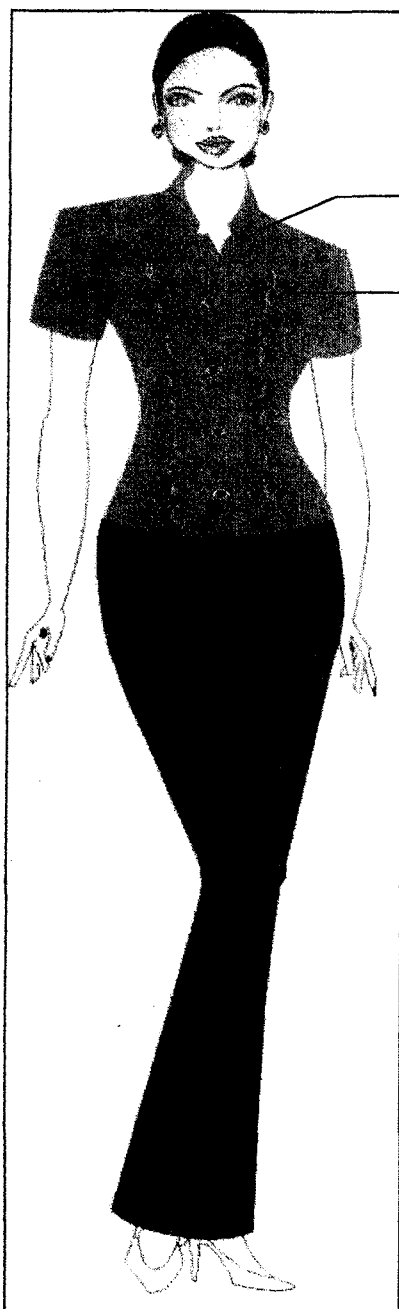


Enlarged detail

FEMALE - TUESDAY

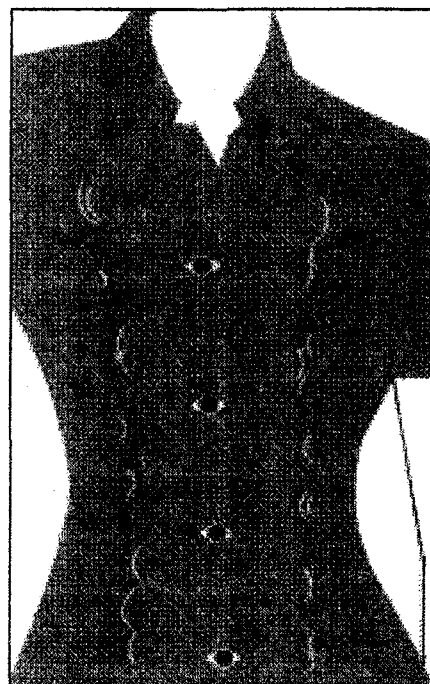
DESCRIPTION:

A persimmon tropical linen blouse (Winslette 1004) with official DepED reverse stamping, accented with multicolor embroidered pleats, stitches on the body and direct torch on the left collar highlighted with buttons in official DepED hologram logo, paired with Russet black pants with off-white twin stripes.

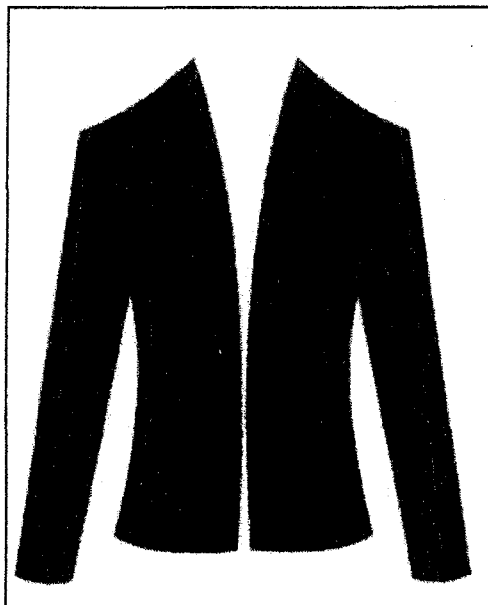


Embroidered DepED Logo
(Torch; length 1.5cm.)

Embroidery made up of
running stitches (thread color
- persimmon) and
embroidered pleats of multi-
colored thread



Enlarged detail



Blazer - optional



REPUBLIKA NG PILIPINAS
REPUBLIC OF THE PHILIPPINES
KAGAWARAN NG EDUKASYON
DEPARTMENT OF EDUCATION
DepEd Complex, Meralco Avenue, Pasig City, Philippines



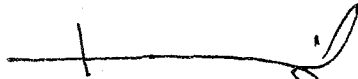
Teodosio C. Sangil, Jr.
Undersecretary, Finance & Administration
Pangalawang Kalihim

Telefax: 631-96-40
Direct Line: 633-93-42
Trunk Line: 632-13-61 local 2221/2007
Email: tedsangil@yahoo.com
Website: <http://www.deped.gov.ph>

March 20, 2009

MEMORANDUM

TO : Regional Directors
Schools Division Superintendents
School Heads

FROM : 
TEODOSIO C. SANGIL, JR.
Undersecretary
Finance and Administration

SUBJECT: REMINDER ON PROCUREMENT OF DEPED UNIFORM

Reports have reached this Office that there were some individuals going around the field name-dropping DepED officials about being endorsed by the Department re: DepED uniform.

Please be informed that the Department has not endorsed anybody or any company regarding the procurement of DepED employee uniform. The DepED Central Office Uniform Committee only approved the design for the national uniform, and not a particular supplier.

Please report any form of name-dropping and misrepresentations to the Office of the undersigned at (02) 633-9342/631-9640.

The uniform allowance amounting to FOUR THOUSAND PESOS (P4,000.00) in cash shall be released directly to DepED teaching and non-teaching personnel. Materials for uniform can be procured from any available sources, since the Department **HAS NOT ENDORSED** any specific supplier.

Please be guided accordingly.