



REPUBLIKA NG PILIPINAS
REPUBLIC OF THE PHILIPPINES
KAGAWARAN NG EDUKASYON, KULTURA AT ISPORTS
DEPARTMENT OF EDUCATION, CULTURE AND SPORTS
UL Complex, Metalco Avenue
Pasig, Metro Manila



Same-Same
sa DECS

September 18, 1997

DECS ORDER

No. 65, 1997

**POLICIES ON THE ESTABLISHMENT AND OPERATION
OF MONTESSORI SCHOOLS**

To: Undersecretaries
Assistant Secretaries
Bureau Directors
Regional Directors
School Superintendents
Directors of Services Centers and Heads of Units
Private Elementary School Principals

1. General Principles. Cognizant of the constitutional mandates to exercise reasonable supervision and regulation of all educational institutions and to protect and promote the right of all citizens to quality education at all levels, the Department of Education, Culture and Sports (DECS) hereby promulgate the following policies on the establishment and operation of Montessori-type schools.

2. Recognition. The Montessori system as founded by Dr. Maria Montessori is hereby recognized as an alternative to the conventional type of teaching.

3. Situationer. Since its introduction in the Philippines, some 142 institutions of learning have explicitly and implicitly laid claim to using the Montessori system via their corporate or school names.

4. Mechanics for Operating. In order to have a systematic appraisal of existing Montessori Schools and other schools requesting to operate as a Montessori school, they shall be favorably endorsed by DECS only upon compliance with Montessori standards set.

5. Guidelines on Monitoring. The Federation of Montessori Schools, Inc. shall formulate guidelines and standards for the establishment and operation of Montessori schools subject to the review and approval of DECS. The same shall be endorsed to the DECS Regional offices who were given the authority to grant permits and recognition of schools pursuant to the provisions of Batas Pambansa, Blg. 232.

R. T. P.

6. Upgrading of Standards. Within a period of three years from the date of this Order, existing Montessori schools shall upgrade their systems in accordance with the standards established and approved by the Secretary.

7. Effectivity. This Order shall take effect immediately.

P. F. Garcia
RICARDO F. GARCIA
Secretary

Reference:

None

Attachment: 1—(D.O. 50-97)

To be indicated in the Perpetual Index
the following subjects:

**POLICY
SCHOOLS**

8. The following personnel are exempt from wearing the prescribed DECS uniform:

- (a) Medical and Dental Staff, who shall wear the white gown regularly and traditionally used by such personnel; and
- (b) Janitors and Maintenance personnel.

Please be guided accordingly.


RICARDO T. GLORIA
Secretary

Encls: As stated

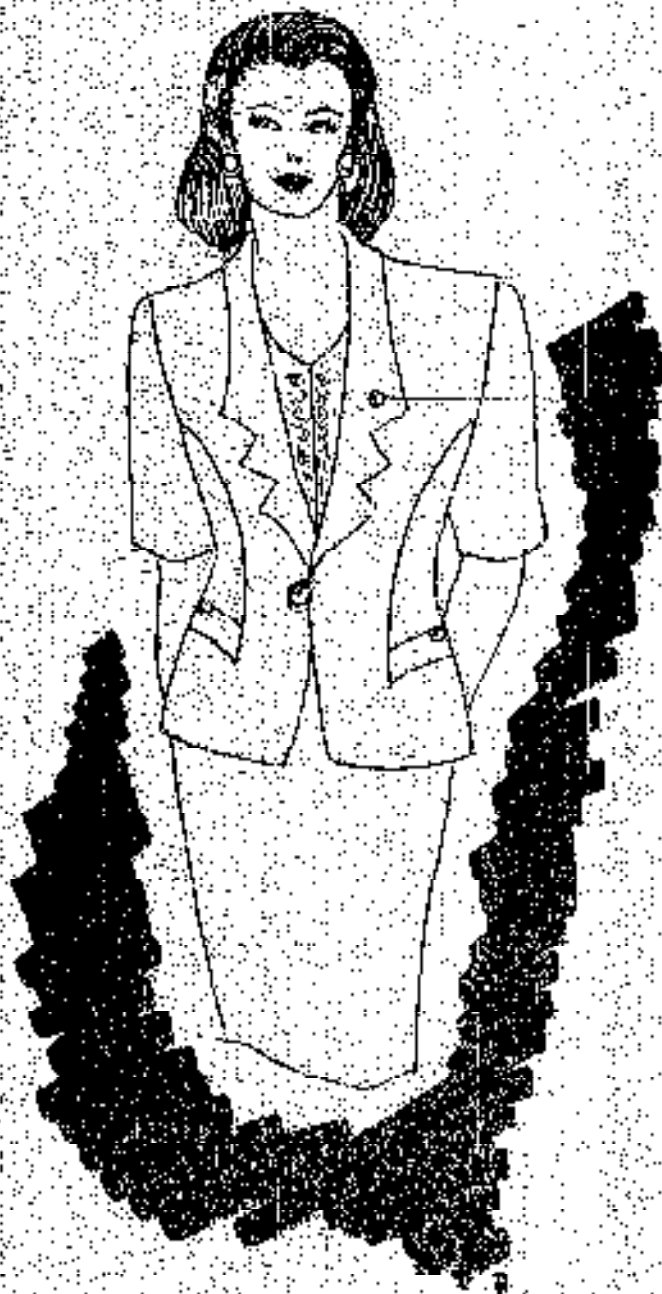
References: DECS Memorandum Nos. 339, s. 1994 and 44, s. 1995

Allotment: 1 - (D.O. 50-97)

To be indicated in the Personal Index under the following subjects:

- 2 RULES & REGULATIONS
- 1 UNIFORMS
- 3 TEACHERS
- 1 EMPLOYEES

TEACHING / NON-TEACHING GALA UNIFORM



DECOR. BROOCH PIN



INNER BLOUSE

ART. 1/2

Gala Uniform

Teaching & Not Teaching



An ivory white inner blouse with light coral embroidery perfectly matches the coral-colored jacket with top-stitched lapels.

A large imported button closes the jacket while two matching buttons adorn each side pocket flap.

Elbow length sleeves,
thirt hips length blouse.

DFCS Logo Pin

Matched perfectly with a
knee length coral skirt,
with lining.

NON-TEACHING PERSONNEL'S DESIGN NO. 1

TUESDAY

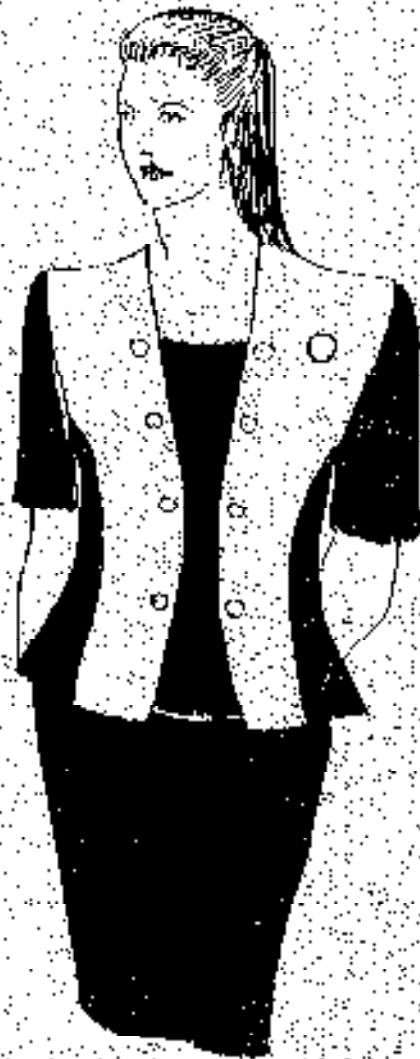


DEES LOGO PIN

811 Jc

Non-Teaching Personnel's

Design Number: 1 - Tuesday



*Front blouse panels in ivory white cloth
contrasted against a
light-ashen gray material
with eight imported,
colored-matching buttons.*

*Elbow length sleeves,
third-hips length blouse.*

DFCS Logo Pin

*Matched perfectly with a
knee-length, light-ashen-gray skirt
with lining.*

NON-TEACHING PERSONNELS DESIGN NO. 2

WEDNESDAY



DESIGN NO. 2

2021

Non-Teaching Personnel's

Design Number 2 | Wednesday



A light blue-gray blouse with a thickly-piped collar accentuated by a blue cabbage-rose.

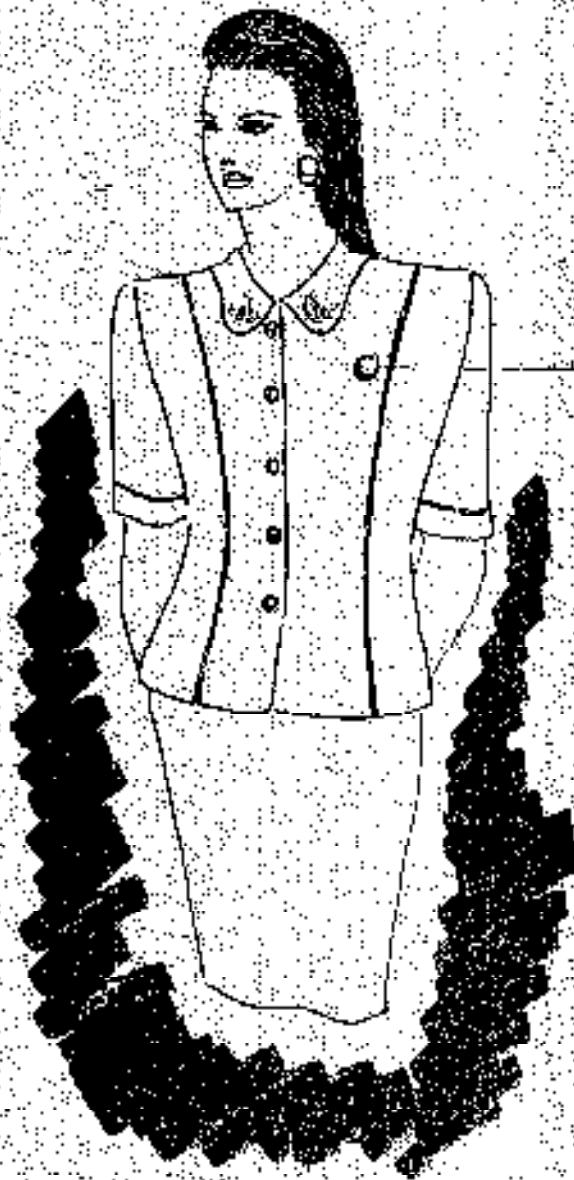
Sides are topped stitched adding contrast to the five imported buttons adorning the front of the blouse.

Elbow length sleeves,
third-hips length blouse.

DECS Logo Pin

Matched perfectly with a knee-length skirt in alternating bluish-gray/midnight blue stripes with pencil thin, majestic purple lines, with lining.

NON-TEACHING PERSONNEL'S DESIGN NO. 5
THURSDAY

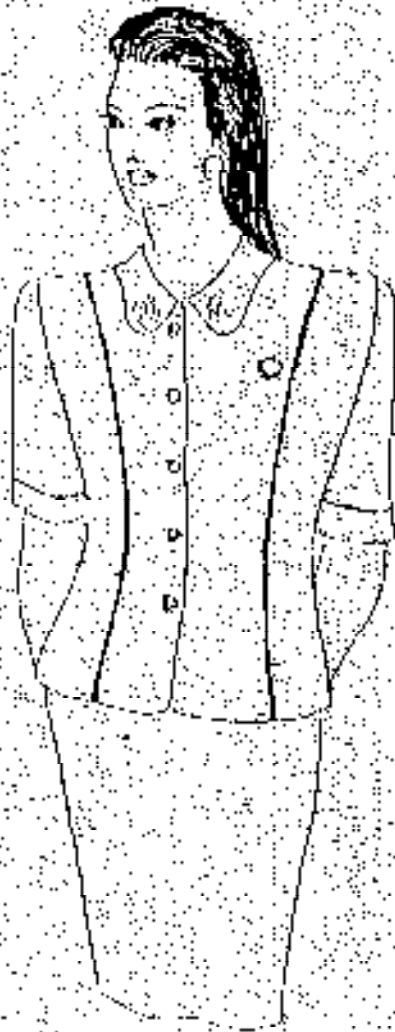


DECORATIVE PIN

2007 *[Signature]*

Non-Teaching Personnel's

Design Number 2 Thursday

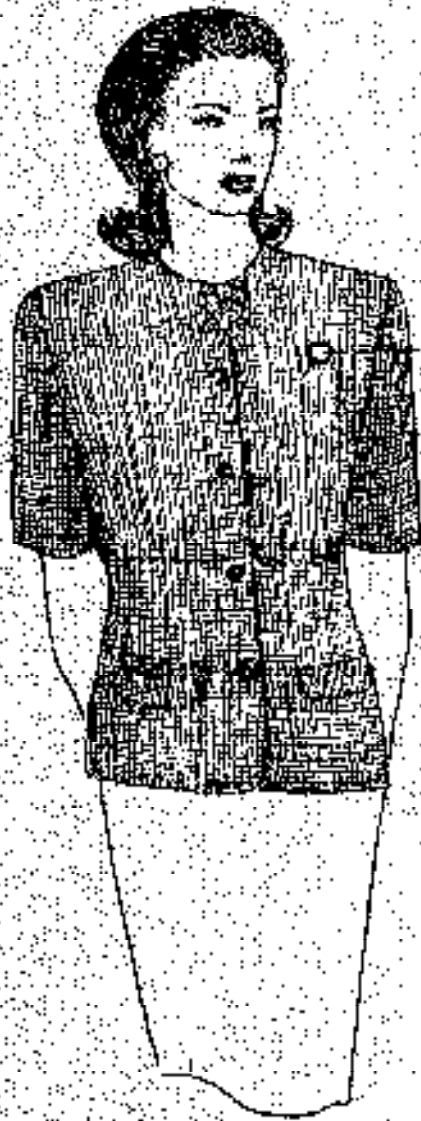


An ivory-white blouse with embroidered cardinal-red flourishes accentuating the rounded collar. Piping upfront and on the elbow-length sleeves are done in a cardinal-red clothing material matching the collar embroidery. Five imported buttons adorn the front of this three-quarter length blouse.

DECS Logo Pin

Matched perfectly with a plain cardinal-red skirt with lining.

TEACHER'S UNIFORM DESIGN NO. 1
TUESDAY

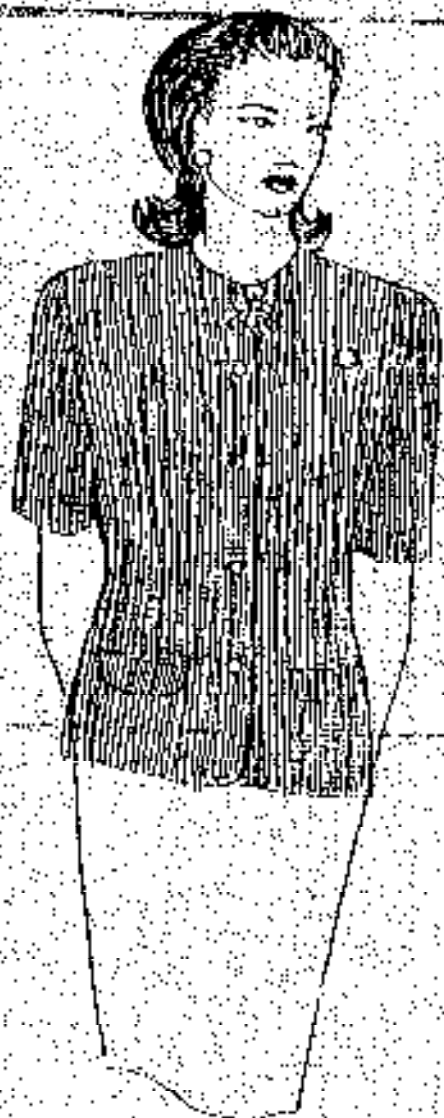


DESIGN NO. 1

2007 J. Lee

Teachers Uniform

Design Number 1 • Tuesday



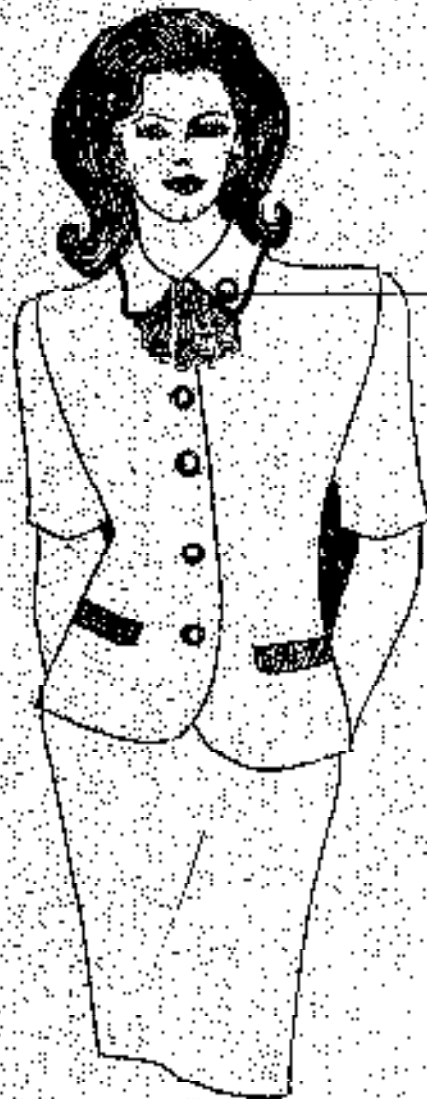
Olive green, small-structured blouse
with five colored-matching
imported buttons
accented by a green rabbidge rose
along the neckline,
with pockets flaps on each side.

Elbow length sleeves,
thigh-length blouse.

DEC'S Logo Pin

Matched perfectly with a
knee-length, spring green skirt
with lining.

TEACHERS UNIFORM DESIGN NO. 2
WEDNESDAY



DECS. LOGO PIN

877 *[Signature]*

Teachers Uniform

Design Number 2 * Wednesday



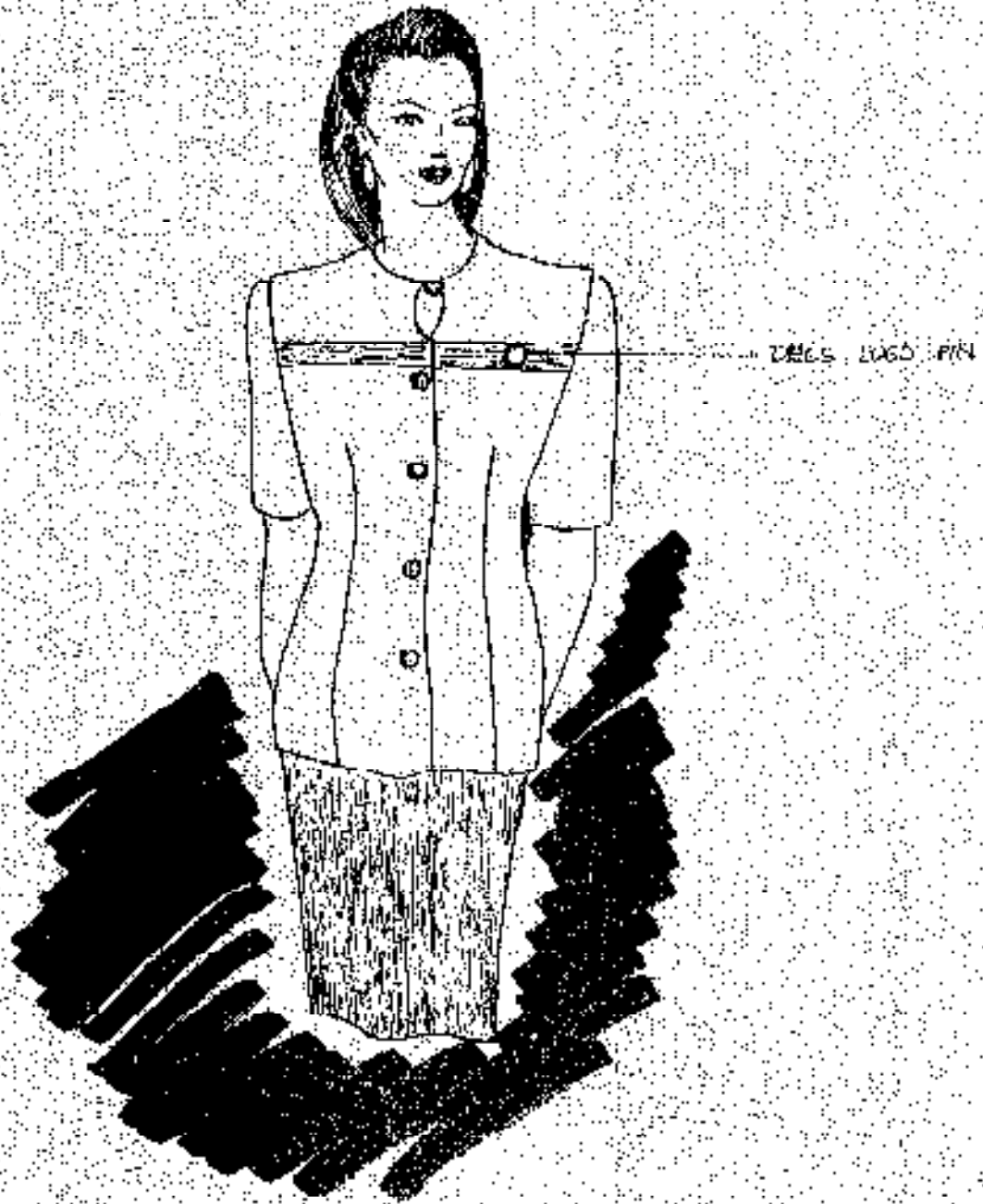
Ivory beige blouse with five
color-matching, imported buttons
accented by a ruffled bow
along the neckline with a piped collar.
The ruffled bow, the piping along
the collar as well as the pocket flaps
found on each side are done using a
maroon, small checked clothing material.

Elbow length sleeves.
Third-hips length blouse.

DECS Logo Pin

Matched perfectly with a
knee-length, navy-red skirt with lining.

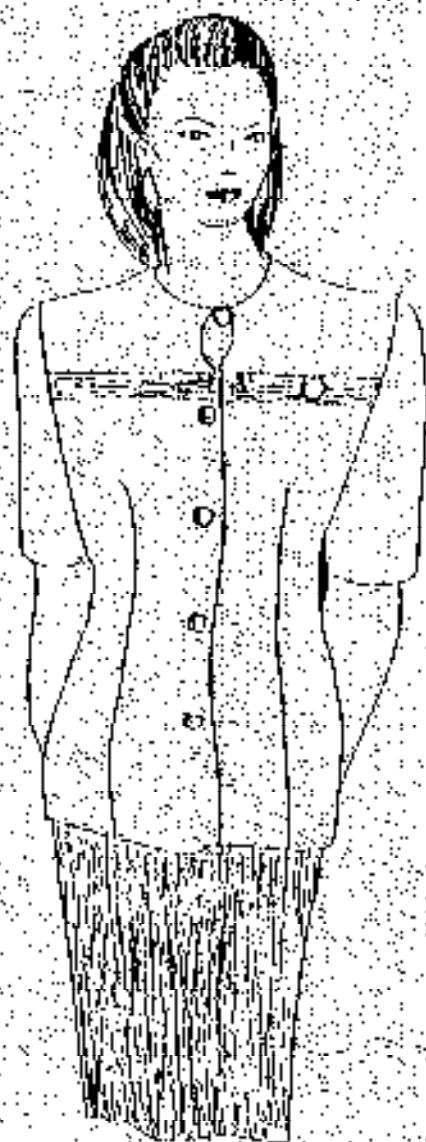
TEACHERS UNIFORM DESIGN NO. 3
THURSDAY



ART [Signature]

Teachers Uniform

Design Number 3 • Thursday



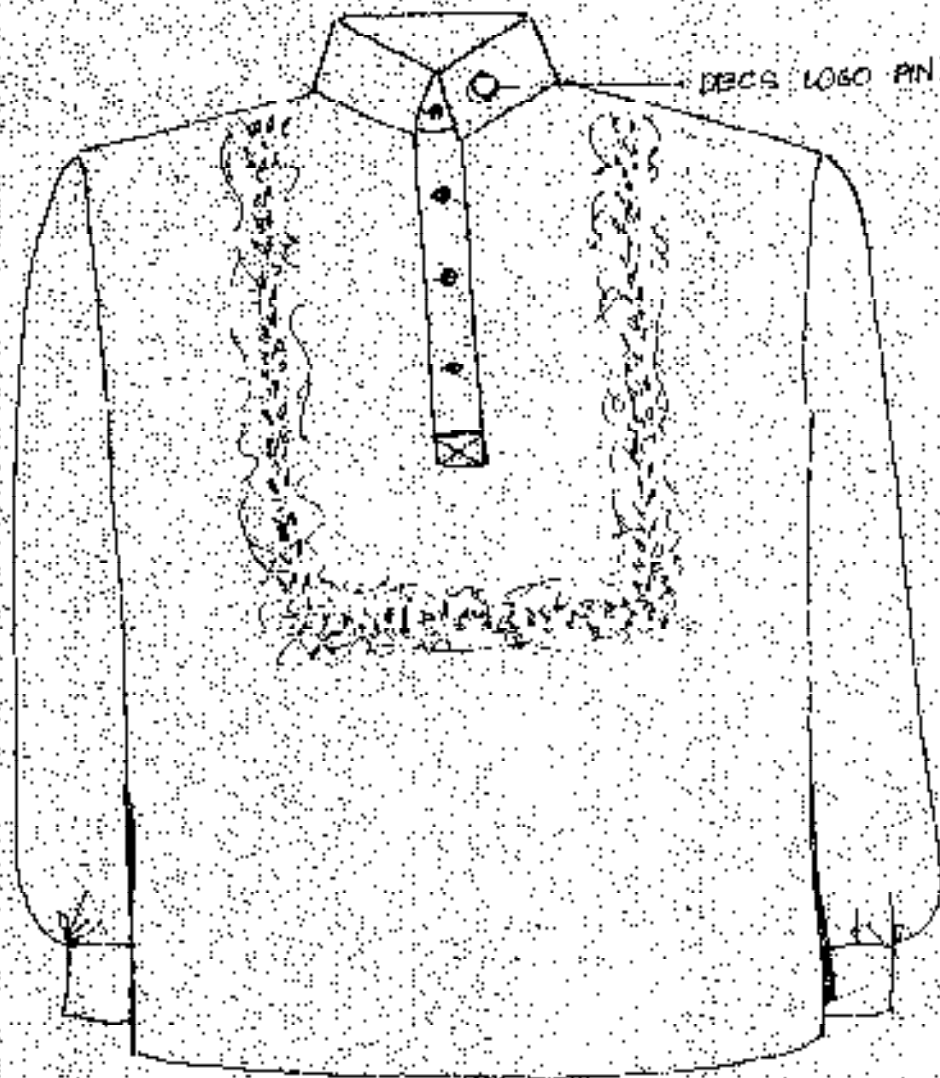
A terracotta colored blouse
with fine colored matching,
imported buttons
accented by an elegant peak-a-boo cut
along the neckline,
and a horizontal cut up front providing
contrast by using the same
clothing material as the skirt.

Elbow length sleeves,
third hip length blouse.

DECS Logo Pin.

Matched perfectly with a
knee-length, woody-tan skirt
with lining.

TEACHING / NON-TEACHING 'CALA' MALE UNIFORM
(MONDAY) : CREAM
WITH BLACK / NAVY BLUE PANTS

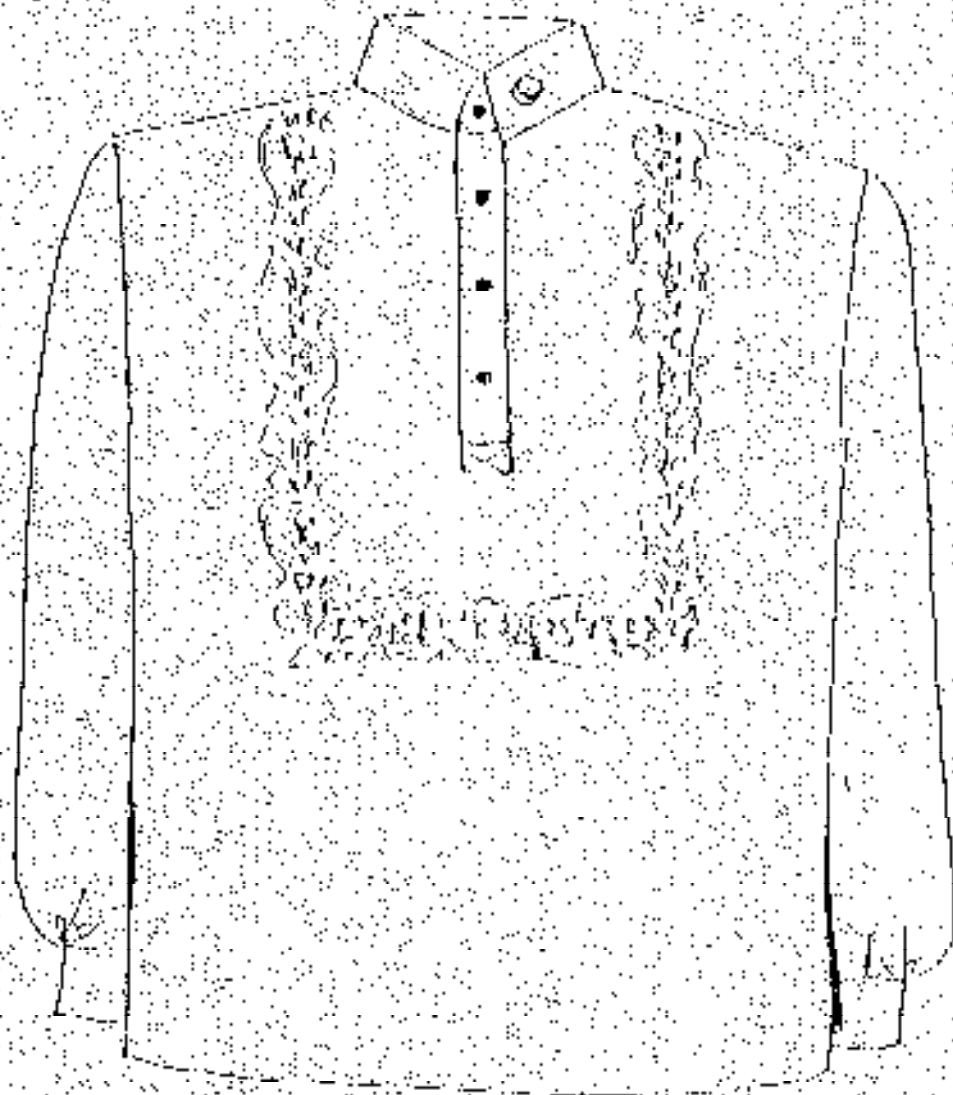


[Handwritten signature]

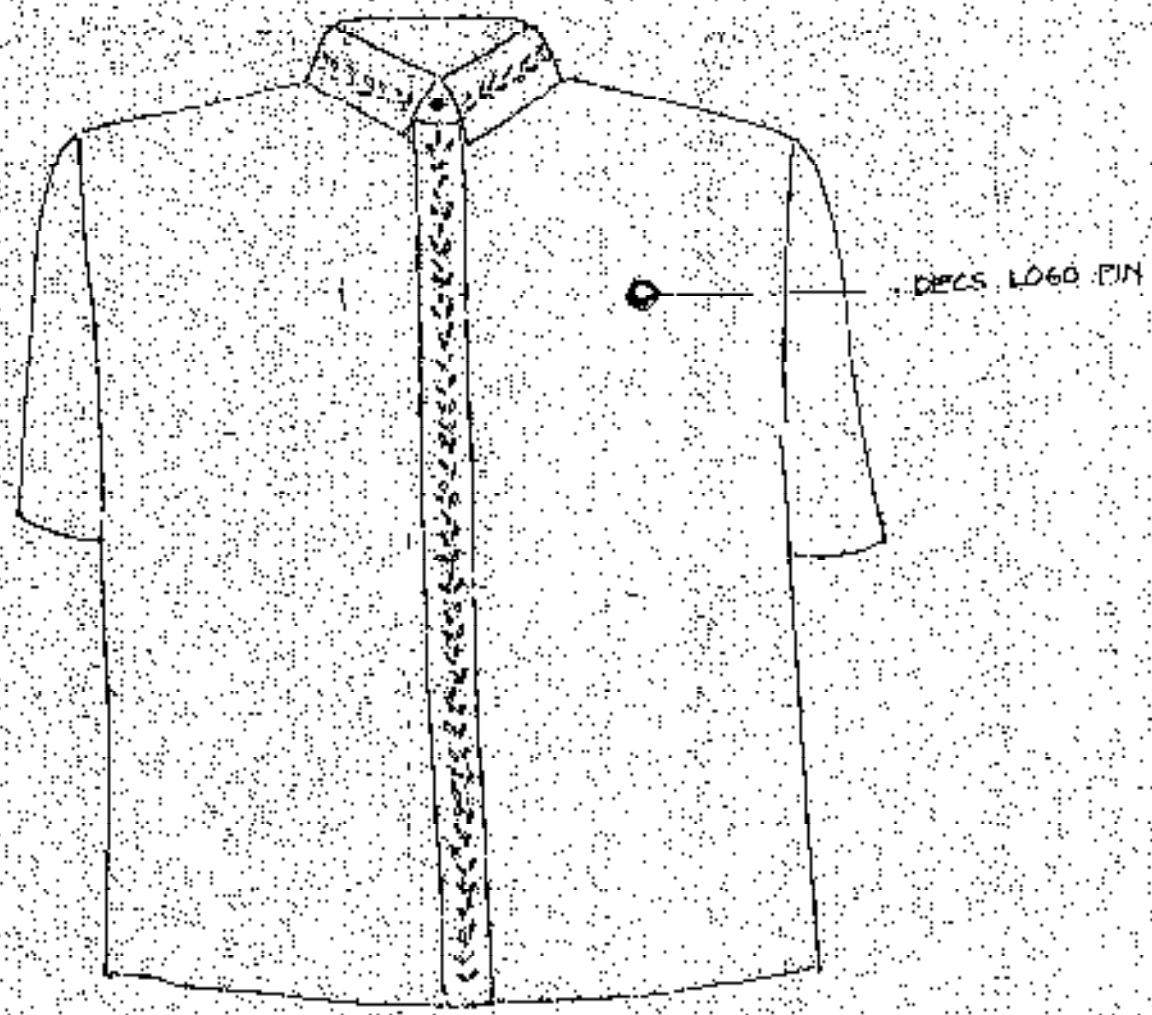
*Teaching & Non-Teaching
Male Uniform*

• G A L A •

*A long sleeved cream barong embroidery design adorning the front.
With black and navy blue pants.*



TEACHING & NON-TEACHING STANDARD MALE UNIFORM



COLORS FOR EACH DAY
BEIGE (TUESDAY) , SKY BLUE (WEDNESDAY) , LIGHT GRAY (THURSDAY)
WITH BLACK * NAVY BLUE PANTS

Handwritten signature or initials.

*Teaching & Non-Teaching
Male Uniform*

STANDARD

*A short-sleeved button with embroidery design adorning the collar and the front.
Beige for Tuesday. Sky-blue for Wednesday. Light-gray for Thursday.
With black and navy blue pants.*

