

Republika ng Pilipinas  
(Republic of the Philippines)  
KAGAWARAN NG EDUKASYON, KULTURA AT ISPORTS  
(DEPARTMENT OF EDUCATION, CULTURE AND SPORTS)  
UL Complex, Pasig, Metro Manila

June 21, 1993

DECS O R D E R  
No. 47, s. 1993

GUIDELINES ON THE EFFECTIVE UTILIZATION AND MAINTENANCE  
OF MULTI-PURPOSE WORKSHOP BUILDINGS (MPWBs)

To: Bureau Directors, Regional Directors,  
and Schools Superintendents

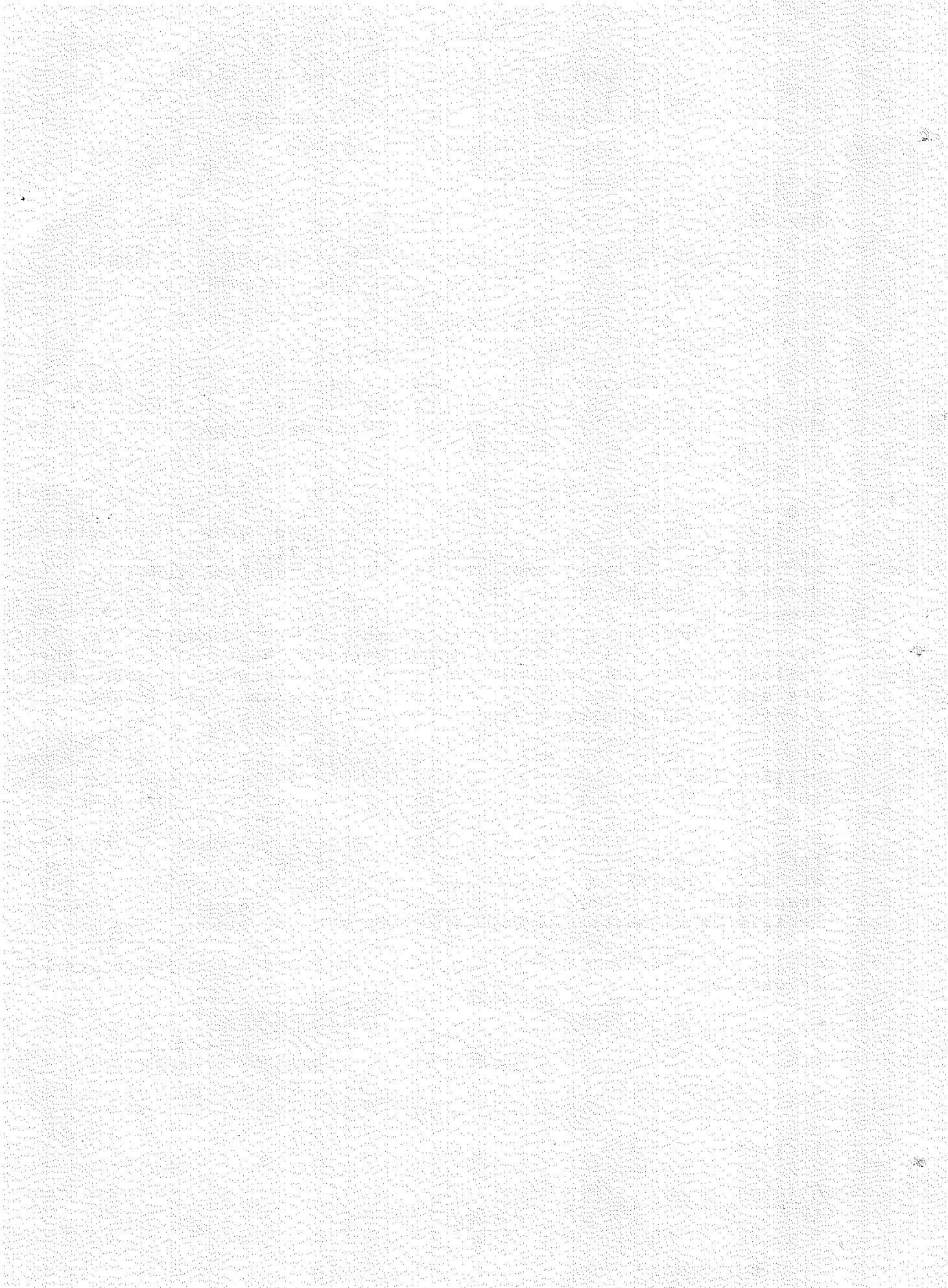
1. In line with the program of DECS to improve the quality of instruction in Edukasyong Pantahanan at Pangkabuhayan (EPP), Multi-Purpose Workshop Buildings (MPWBs) were constructed in the different regions of the country.
2. The purpose of the MPWBs is to provide instructional space where activities in Home Economics, Industrial Arts, and Agricultural Arts can be carried out and some instructional devices shared. Such arrangement can facilitate the development of the desired knowledge, skills, values, and attitudes in the different aspects of the EPP.
3. However, the result of the survey conducted by the Bureau of Elementary Education revealed that most of these buildings are not properly utilized as envisioned. Some MPWBs are used for DLRCs, office of school heads, storage for destroyed furniture and equipment, and others.
4. Inclosure No. 1 are the guidelines on the maximum utilization and proper use of the MPWBs. Inclosure Nos. 2-6 are the different models on the utilization of space by the MPWBs.
5. The Division EPP Supervisors in charge of Physical Facilities are tasked to monitor the utilization and maintenance of said buildings and submit reports of findings to their respective regional offices, copy furnished the Physical Facilities Division, Bureau of Elementary Education.
6. Immediate dissemination of this Order to all concerned is directed.

  
ARMAND V. FABELLA  
Secretary

Incls.: As stated  
Reference: None  
Allotment: (D.O. 1-87)  
To be indicated in the Perpetual Index  
under the following subjects:

BUILDINGS  
PROJECTS

REPORTS  
RULES & REGULATIONS



(Inclosure No. 1 to DECS Order No. 17, s. 1993)

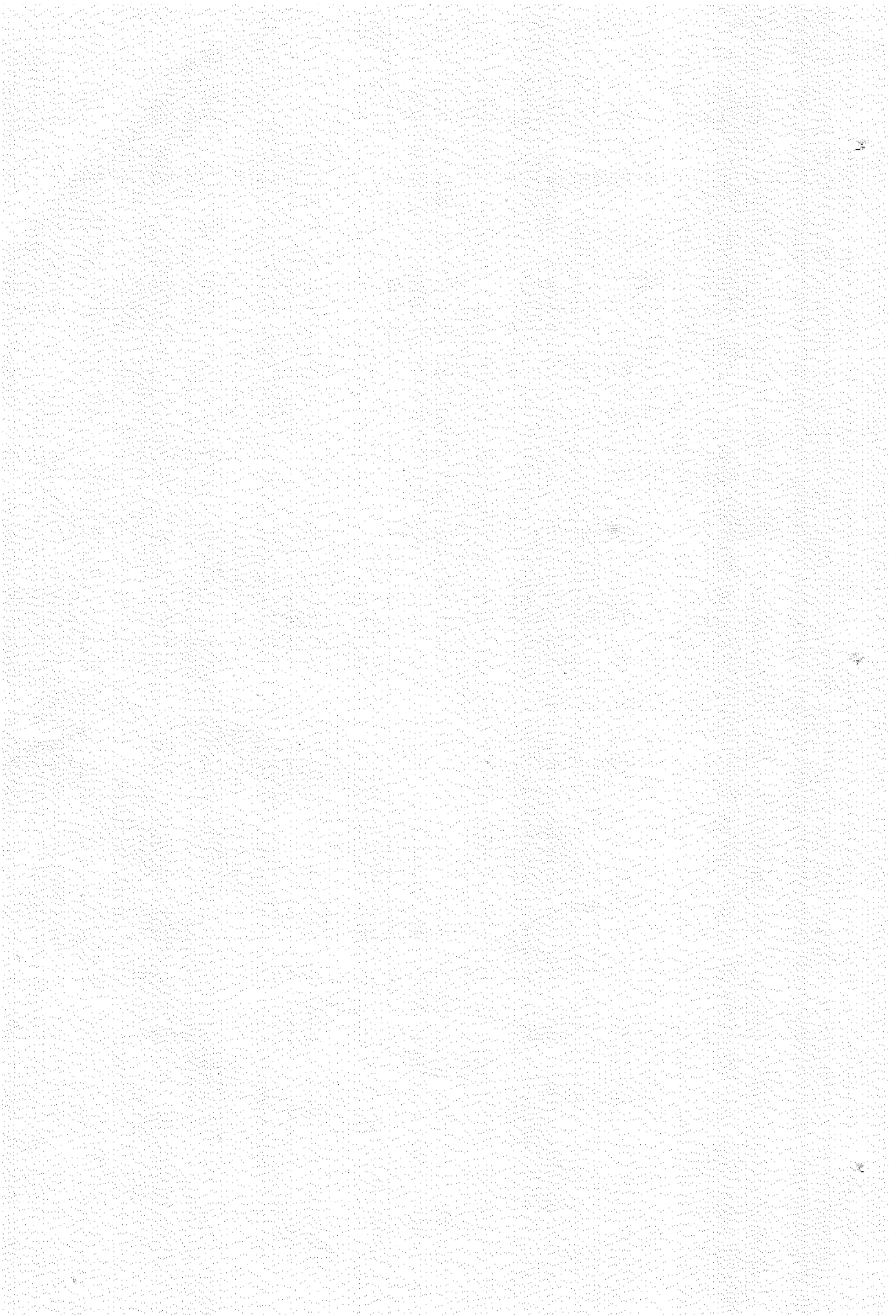
## GUIDELINES IN THE UTILIZATION AND MAINTENANCE OF MPWB

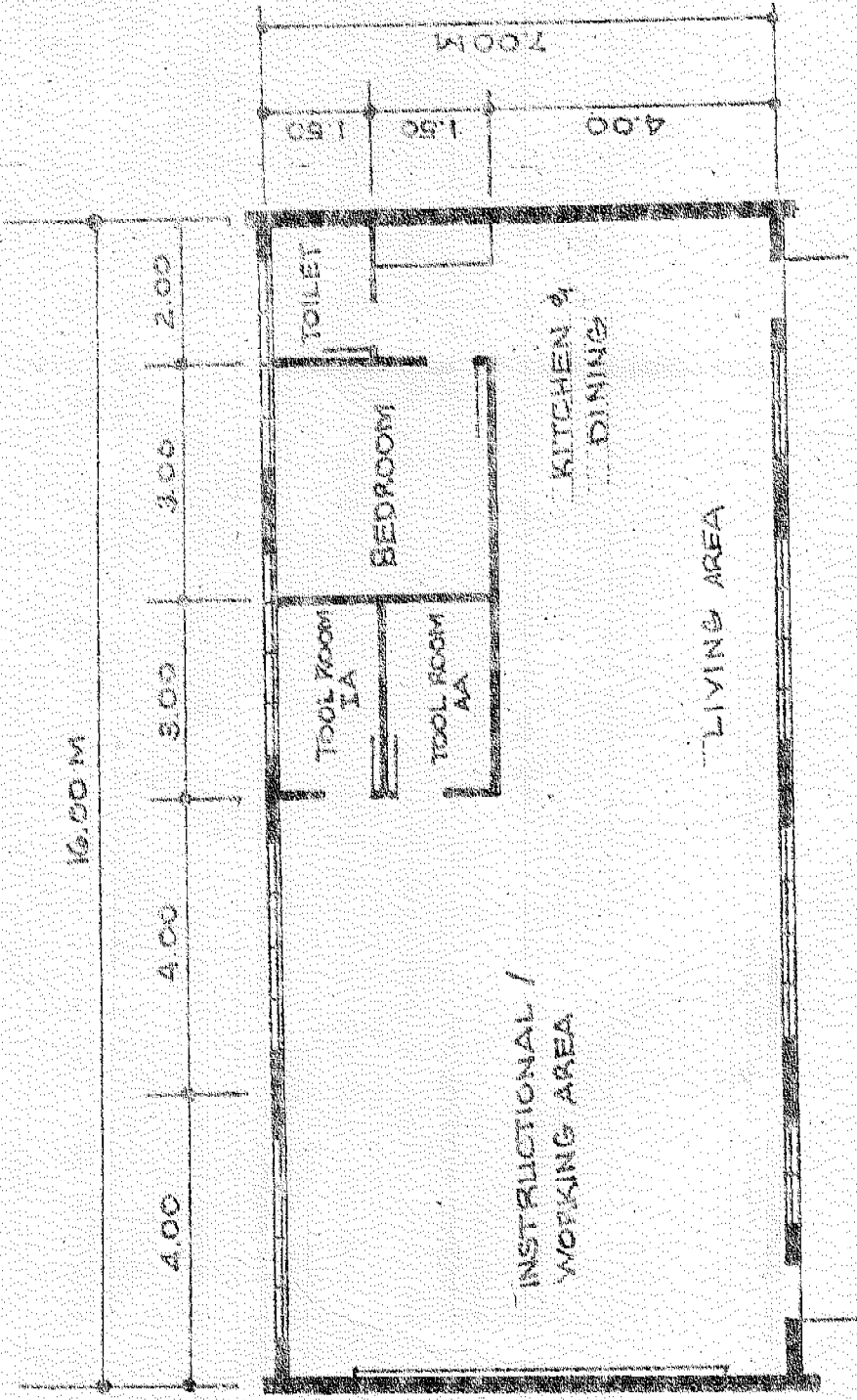
### I. Utilization

1. The MPWB should be used exclusively for the EPP classes thru proper scheduling of classes in Industrial Arts, Agricultural Arts and Home Economics.
2. The building lay-out should provide the necessary spaces for the different component areas to carry out the expected learnings in EPP.
3. The MPWB may be used for a combination of two components of the EPP if other buildings are not available/ existing for any component.
4. The MPWB should not be used as storage for broken chairs, tables and others.
5. The school heads/administrators should exert efforts in providing the facilities/tools/equipment for the MPWB relative to the efficient and effective delivery of EPP instructions.

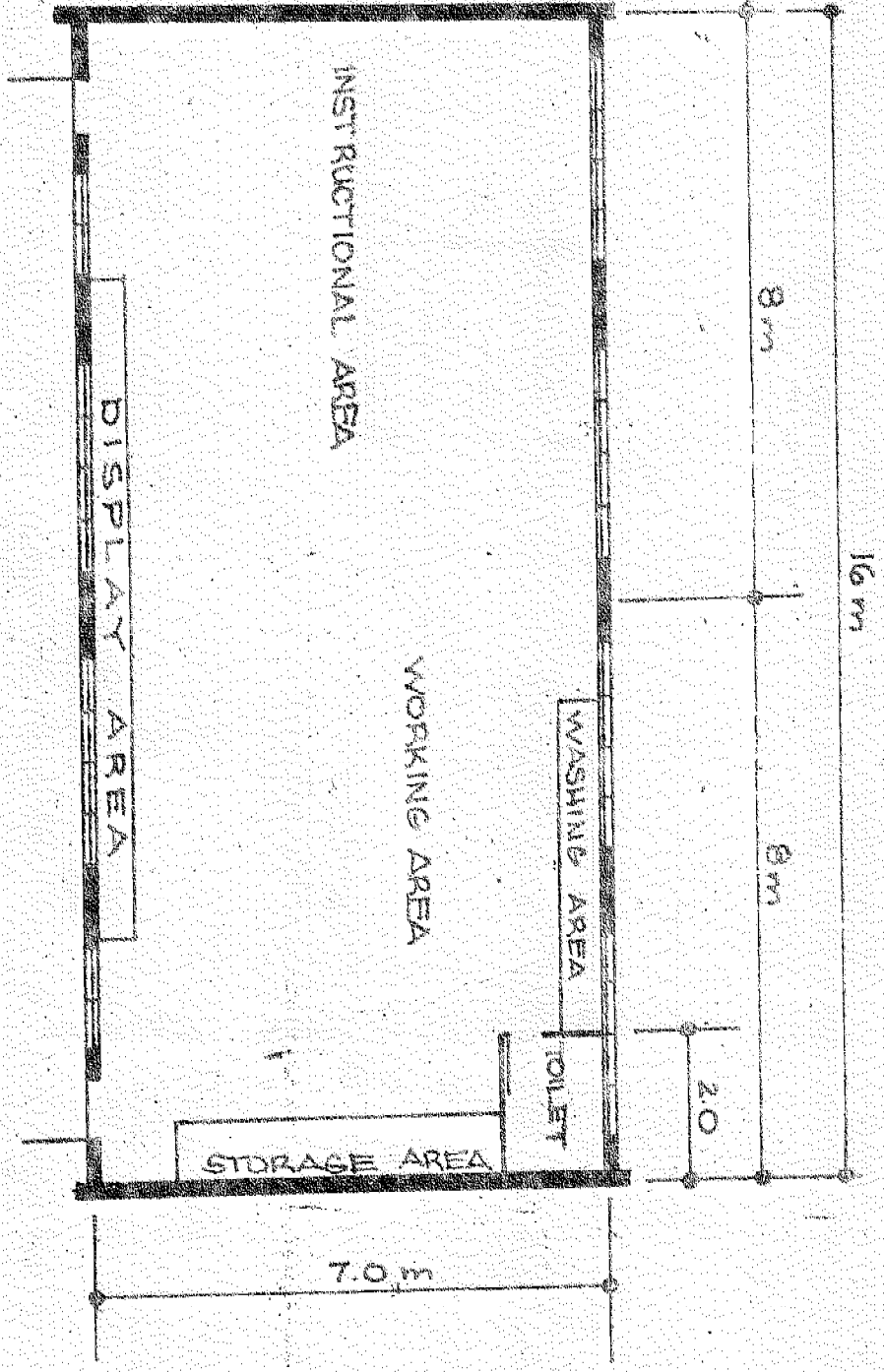
### II. Maintenance

1. The school head who is the chairperson shall designate the EPP teachers to take care of the general upkeep of the MPWB.
2. The EPP teachers shall report to the chairperson of the SMMC (School Management and Maintenance Committee) any part of the building that needs major repair.
3. The MPWB should, as much as possible, be provided with water facilities and electrical installation.
4. The MPWB should be provided with wooden or iron grills for safety.
5. Proper use and care of the building facilities should be observed at all times.
6. Monthly inspection of the parts of the building should be conducted by the division supervisor incharge of EPP.

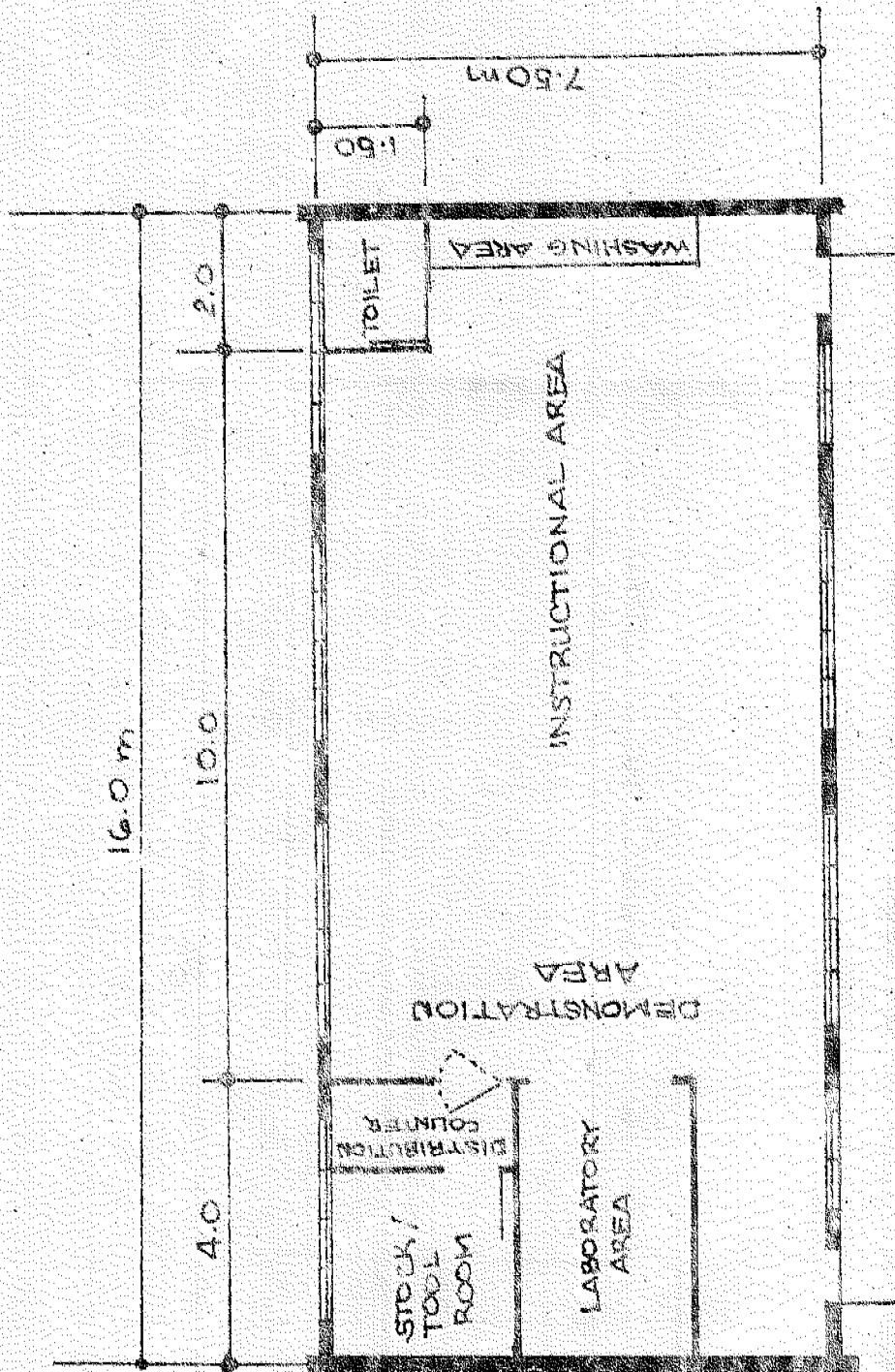




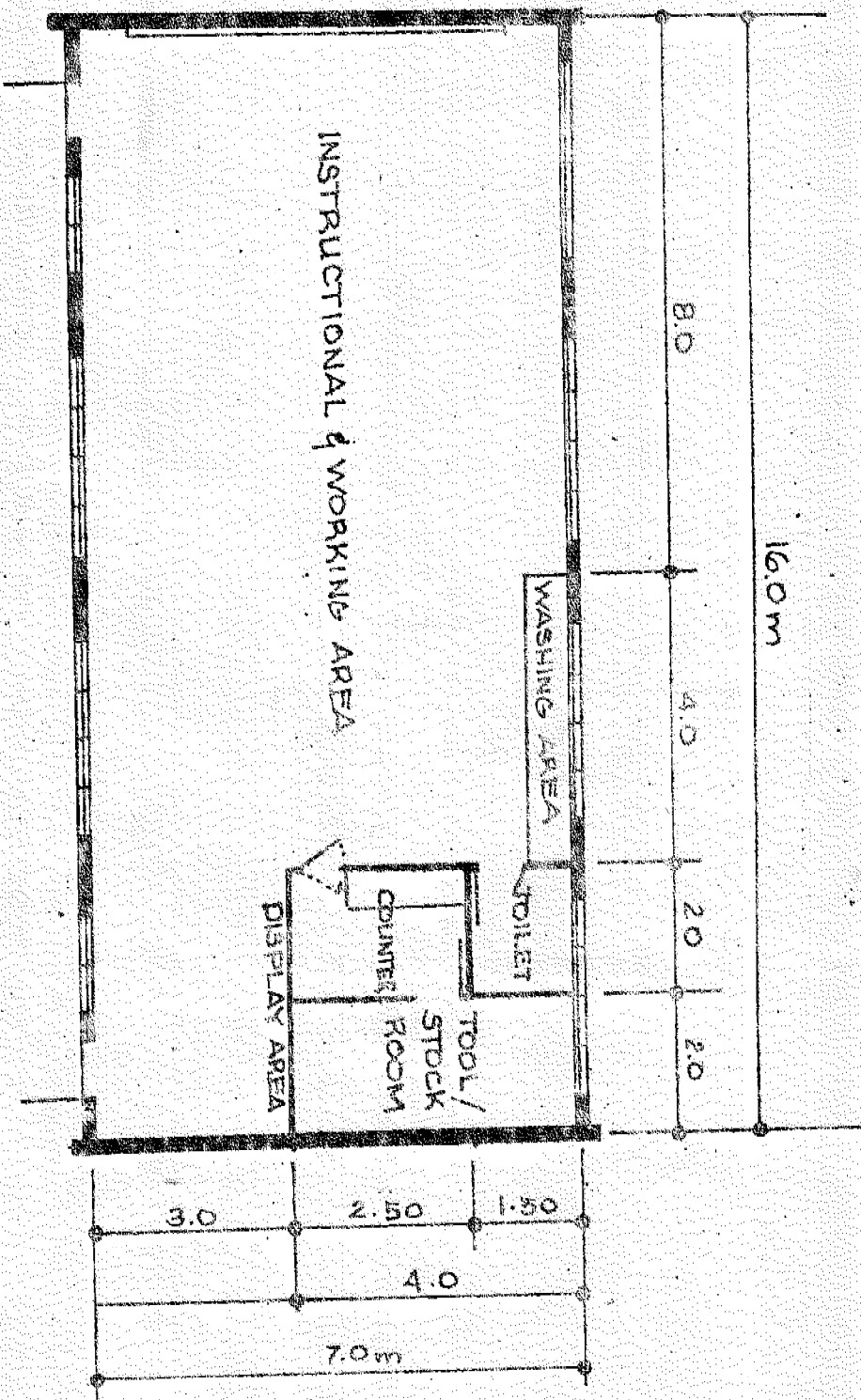
MODEL LAYOUT OF A MULTI-PURPOSE WORKSHOP BUILDING SHOWING THE SPACE ALLOCATION FOR THE THREE (3) COMPONENTS OF EDUKASYONG PANTAHANAN AT PANGKABUHANAN (EPP)



MODEL LAYOUT OF THE MULTI-PURPOSE WORKSHOP BUILDING SHOWING THE SPACE ALLOCATION WHEN USED FOR BOTH INDUSTRIAL ARTS AND AGRICULTURAL ARTS



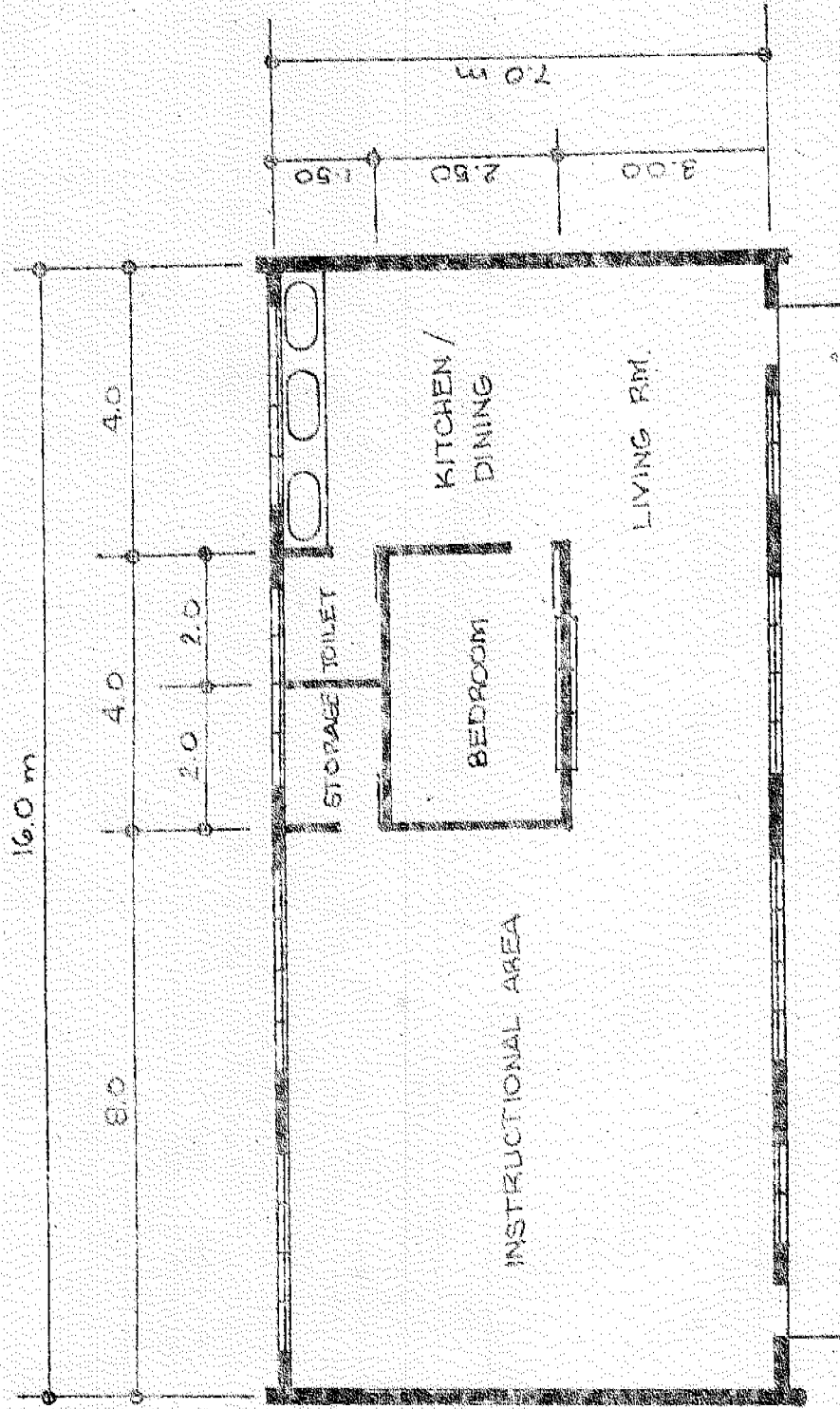
MODEL LAYOUT OF MULTI-PURPOSE WORKSHOP BUILDING  
WHEN SOLELY USED FOR AGRICULTURAL AED



MODEL LAYOUT OF MULTI-PURPOSE WORKSHOP BUILDING  
WHEN SOLELY USED FOR INDUSTRIAL ARTS



Inclusu re No. 6



MODEL LAYOUT OF MULTI-PURPOSE WORKSHOP BUILDING  
WHEN SOLELY USED FOR HOME ECONOMICS

