

Republika ng Pilipinas
(Republic of the Philippines)
MINISTRI NG EDUKASYON AT KULTURA
(MINISTRY OF EDUCATION AND CULTURE)
Maynila

July 29, 1981

MEC O R D E R
No. 34, s. 1981

MEC-PROFEM IMPLEMENTING GUIDELINES

To: Bureau Directors
Cultural Agency Directors
Regional Directors
Chiefs of Services and Heads of Units
Schools Superintendents
Presidents, State Colleges and Universities
Heads of Private Schools, Colleges and Universities
Vocational School Superintendents/Administrators

1. For a more effective and holistic implementation of the Ministry's contribution to the national Program for Forest Ecosystem Management (PROFEM) and in line with the livelihood and incentive directed features of the Revised Implementing Guidelines of P.D. 1153 on the Citizen Tree Planting Decree, issued on July 7, 1981 by the National PROFEM Council, the consolidation, integration and maximization of the various reforestation, afforestation and support programs, projects and activities involving all students in public and private schools, including all personnel and staff of all offices and units of the Ministry under the MEC-PROFEM program is hereby evolved.

2. A MEC-PROFEM Executive Committee at the national, regional, division (city/provincial), and district levels, composed of eleven (11) members representing offices or agencies involving in-school population in the PROFEM projects shall include the following:

MEC Deputy Minister for Administration and Operations as chairman, and the PROFEM representatives of:
Bureau of Forest Development
Ministry of Human Settlements
Bureau of Plant Industry
Metro Manila Commission
PROFEM Executive Director, MNR
National Economic Development Authority
Ministry of National Defense
MEC-PROFEM Executive Director and
Two others to be designated by the Minister,
as members

3. To ensure the attainment of a more holistic and effective program output, action officers or personnel in charge of the following programs/projects in the Ministry shall constitute as members of the MEC-PROFEM Task Force at the national, regional, provincial/city division, district and school levels:

- a. Tree Planting Action Program (P.D. 1153) requiring every citizen from 10 years old and above to plant one tree every month for a period of five years;
- b. Seed collection and banking project at the municipal/ barangay level (LOI 424);
- c. School Nursery Development (LOI 754) requiring each elementary and secondary school to establish school nurseries in their respective school campuses;
- d. School Orchard Development Program (LOI 586) requiring every school to put up or establish a school orchard;
- e. MEC Tree Farm Project - communal tree/farming for school/divisions;
- f. Mini-Forest and/or Parks Development (LOI 1023) requiring each municipality or district to establish at least one hectare of mini-forest either in a composite or non-composite area;
- g. Tatag Maharlika - requiring the tree planting and proper maintenance of trees along national roads and the Maharlika highway;
- h. BLISS II Agroforestation and Tree Farm Project - establishing specific areas of 50 hectares and above for tree-farm and agroforestation project;
- i. Alay Tanim Contests - nationwide search for outstanding schools, orchards, nurseries and tree plantations of school, division and regional levels; providing reward in the form of school buildings to outstanding school performance;
- j. Dendro Thermal and School Reforestation Program involving national secondary state colleges and universities in the tree farming of 5 to 1,000 hectares extending soft loan of 15 years at 4% interest after fifth year of ₱3,000 per hectare planted to ipil-ipil and/or other trees as source of energy;

k. The Outstanding YCAP Service (TOYS) Awards - a nationwide annual search for outstanding Tree Planting Action Program project giving recognition to performance, leadership and administrative support of YCAP student-coordinators and school administrators, providing recognition and rewards in the form of scholarship, fellowships; salary and merit increase and travel grants; and

1. National Afforestation, Reforestation and Rehabilitation (NARRA) Awards - a nationwide PROFEM reward for outstanding youth and school tree planting maintenance and management of PROFEM projects.

4. The National MEC-PROFEM Task Force shall be headed by Atty. Hermenegildo C. Dumlao, MEC Deputy Minister for Operations and Administration assisted by MEC-PROFEM Executive Director, Ma. Lourdes V. Macatangay, shall be the national coordinator in carrying out the successful operation of the mission.

5. Regional directors are enjoined to implement the inclosed MEC-PROFEM operation plan and to maximize involvement and active participation of their respective schools, districts, divisions, and regional YCAP coordinators in the program to ensure the effective greening of the countryside.

6. All communications, reports and feedback on this program shall be coursed through the MEC-PROFEM Regional Secretariat at the MEC regional offices, and shall be addressed to:

MEC-PROFEM Secretariat
Office of the Minister
Ministry of Education and Culture
Arroceros St., Manila

7. Maximum information campaign of the MEC-PROFEM guidelines, objectives, goals, features Calendar for SY 1981-1982, minimum requirements per school, district and division and its system of evaluation, awards and incentives through work-conferences, seminars and/or memorandums is hereby enjoined.

8. For immediate implementation.

(SGD.) ONOFRE D. CORPUZ
Minister of Education and Culture

Incl. As stated

Reference: Dept. Order: No. 45, s. 1977

Allotment: 1-2-3-4--(D.O. 1-76)

To be indicated in the Perpetual Index under the following subjects:

COMMITTEE	OFFICIALS	REFORESTATION
EMPLOYEES	PROGRAM, SCHOOL	REPORT
LEGISLATION	PROJECT	VOCATIONAL EDUCATION

not a file

Inclosure 1.0 MEC Order No. 34, series 1981

OPLAN: MEC-PROFEM

Office of the Deputy Minister
For Operations and Administration
Ministry of Education and Culture
Manila

July, 1981

TABLE OF CONTENTS

	<u>Page</u>
I. Mission	1
II. Specific Objectives	1
III. Implementing Strategies	3
A. National Level	3
B. Regional Level	5
C. Provincial/ City Division Level	6
D. School, Colleges and Universities Level	7
IV. Program Implementation	8
MEC-PROFEM Program Requirements	10
V. General Provisions	11
Legal Basis: P. D. 1153	
VI. Budgetary Outlay	13
Annexes	
1. 1981-982 MEC-PROFEM Calendar	14
2. Guidelines in the Selection of School Treeplanting Area Priorities	17

OPLAN : MEC-PROFEM

I. Mission :

To consolidate, integrate and maximize the over-all reforestation, afforestation and support programs projects/ activities and efforts of the total student and school personnel population in contributing to a more effective and holistic implementation of the national program for Forest Ecosystem Management (PROFEM).

II. Specific Objectives:

- A. To identify and dovetail all existing in-school PROFEM related projects/activities as components of a national program for forest ecosystem management of the Ministry of Education and Culture;
- B. To unify and intensify activities involving school population supportive to the realization of a livelihood and incentive directed goals of the New PROFEM including the:
 1. Treeplanting Action Program -(PD 1153) requiring every citizen from 10 years and above to plant one tree every month for a period of five years;
 2. Seed collection and banking project at the municipal/ barangay level (LOI 424)
 3. School Nursery Development -(LOI 764) requiring each elementary and secondary school to establish school nurseries in respective school campuses;
 4. School Orchard Development Program-(LOI 586) requiring every school to put up or establish a school orchard;
 5. MFC Tree Farm Project
 6. Mini-Forest and/or Parks Development -(LOI 1023)- requiring each municipality or district to establish at least one hectare of mini-forest either in a composite or non-composite areas;

7. Tatag Maharlika - requiring the treeplanting and proper maintenance of trees along national roads and the Maharlika Highway;
 8. BLISS II Agroforestation and Tree Farm Project- establishing specific areas of 50 hectares and above for treefarm and agroforestation project;
 9. Alay Tanim Contests - nationwide search for outstanding schools, orchards, nurseries and tree plantations of school, divisions and regional levels; providing reward in the form of school buildings to outstanding school performance;
 10. Dendro Thermal and School Reforestation Program- involving national secondary state colleges and universities in the treefarming of 5 to 1,000 hectares extending soft loan of 15 years at 4% interest after fifth year of ₱ 3,000 per hectare planted to ipil-ipil and/or other trees as source of energy;
 11. The Outstanding YCAP Service (TOYS) Awards- a nationwide annual search for outstanding Treeplanting Action Program projects giving recognition to performance, leadership and administrative support of YCAP student coordinators and school administrators, providing recognition and rewards in the form of scholarship, fellowships, salary and merit increase and travel grants; and
 12. National Afforestation, Reforestation and Rehabilitation (NARRA) Awards - a nationwide ProFEM reward for outstanding youth and school treeplanting maintenance and management of ProFEM projects.
- C. To identify and assign specific and permanent district/division treeplanting areas of each respective school, district and division, agencies and offices under the Ministry for proper recognition, incentive and maintenance or care.
 - D. To effectively coordinate and dovetail efforts of the Ministry with the total national development goals in general and of the national ProFEM targets in particular.
 - E. To evolve a cohesive machinery for a more effective implementation of nationwide mobilization efforts in the Ministry from the school, district, provincial and city divisions, regional and to the national level.

III. STRATEGIES

A. National Level

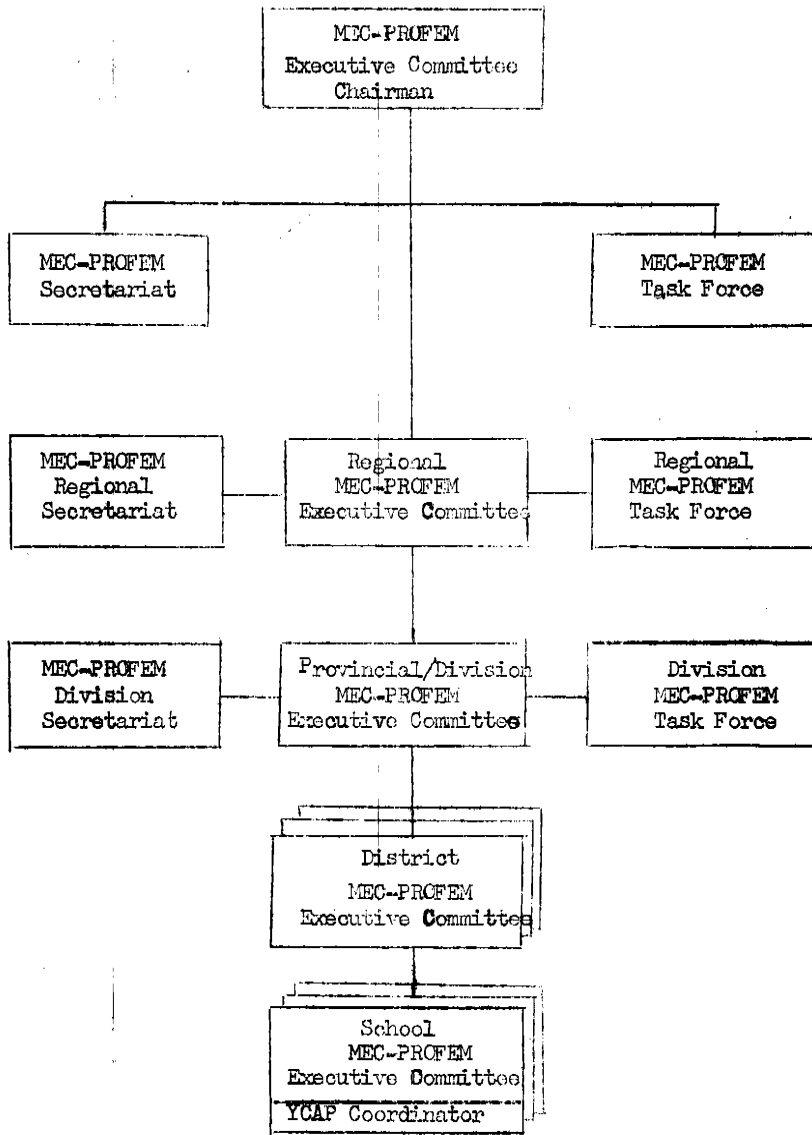
1. A national MEC-PROFEM Executive Committee representing agencies involved in the program is hereby created for the purpose of implementing policies, programs and projects relative to the successful attainment of the mission and objectives.
2. The MEC-PROFEM Executive Committee shall be composed of 11 members representing offices or agencies involving in-school population in the PROFEM projects. These shall include:

MEC Deputy Minister for Administration and Operations as chairman and the PROFEM representative of:

Bureau of Forest Development,
Ministry of Human Settlements,
Bureau of Plant Industry,
Metro Manila Commission,
PROFEM Executive Director, MNR
National Economic Development Authority,
Ministry of National Defense,
MEC-PROFEM Executive Director and
Two others to be designated by the Minister,
as members.

3. A national MEC-PROFEM Task Force is also hereby created to closely coordinate and/or undertake activities that shall be assigned by the MEC-PROFEM Executive Council/Committee. It shall be composed of the following:

<u>Name</u>	<u>Office/Program</u>
1. Macatangay, Ma. Lourdes V.	MEC-PROFEM Tatag Maharlika TAP-ProfEM Dendro Thermal
2. Laya, Silvina	Alay Tanim
3. Esteban, Pedro	BLISS II
4. Ramento, Anastacio	NCR
5. Coronel, Arturo	Manila
6. Salas, Felimon	Pasay
7. Icasiano, Bienvenido	Caloocan
8. Valdez, Francisco	MEC Central Office
9. Azurin, Edna	Quezon City



MEC-PROFEM ORGANIZATIONAL CHART

4. The MEC Deputy Minister for Operations and Administration assisted by MEC-PROFEM Executive Director, Ma. Lourdes V. Macatangay, shall be the national coordinator in carrying-out the successful operation of the mission.
5. The members of the Task Force, individually and collectively in their respective areas of responsibility projects/programs shall assume the leadership and the role of action/lead facilitators in implementing the projects/activities assigned to them.
6. A National MEC-PROFEM Secretariat whose membership shall be designated by the national MEC-PROFEM Executive Committee headed by an Executive Director shall provide staff and technical support to the Executive Committee and shall take charge of proper monitoring, recording and reporting of MEC-PROFEM national implementation.

B. Regional Level

1. At the Regional level, the MEC Regional Directors are hereby directed to create in their respective areas of responsibility, a regional organizational structure similar to the National MEC-PROFEM Executive Committee, in close coordination with the Regional ProfEM Councils in their respective areas.
2. A regional coordinating secretariat whose membership shall be composed of officials/personnel in-charge of MEC-PROFEM program-projects implemented in the region shall take charge in the proper monitoring, recording and reporting of the regional implementation of the program.
3. The MEC Regional Director represented by the Assistant Regional Director, assisted by the Regional YCAP Coordinator shall be the regional coordinator in carrying-out the successful implementation of the mission and goals or objectives of the program within the respective areas of responsibility.

4. Monitoring of activities/accomplishments shall be coursed through the National MEC-PROFEM Secretariat Office of the Deputy Minister for Operations and Administration, Ministry of Education and Culture, Arroceros, Manila to ensure proper coordination to and from the field and to higher authorities.
5. MEC Regional Directors are directed to provide their respective Regional MEC-PROFEM Secretariat with permanent specific area and designate full time personnel for proper record management and effective monitoring of the program components.
6. The Regional MEC-PROFEM Committee shall see to it that a more effective and efficient delivery of various PROFEM projects/programs are implemented properly in the region; with each program component assigned specific areas/goals, attainable target within a period to facilitate accurate and valid reporting.

C. Provincial/City Division Levels

1. The school provincial/ city Division Superintendent shall designate the Assistant School Superintendent to be assisted by the Division YCAF Coordinator shall take charge in carrying-out the successful implementation of the mission and goals or objectives of the program within the respective areas of responsibility.
2. A Division MEC-PROFEM Secretariat whose membership shall be composed of officials or personnel assigned to take charge of the various PROFEM project components shall take charge in the proper monitoring, recording and reporting of the division implementation of the program.
3. The School Superintendent is hereby directed to assign specific office space and designate permanent personnel to take charge of the proper monitoring, recording and reporting of the program within the area.
4. The Division MEC-PROFEM Executive Committee composed of agency representative similar to the national structure shall closely coordinate with the provincial PROFEM Council in the planning and implementation of the program particularly in the designation of permanent specific treeplanting areas for each school/district.

5. Monitoring of all activities/accomplishments shall be coursed through the Regional MEC-PROFEM Secretariat in the respective MEC Regional Office to ensure proper coordination to and from the field and to higher authorities.

D. School, Colleges and Universities Levels

1. All heads of school, colleges and university, public and private shall designate at least one full time YCAP PROFEM school, college/university coordinator/director to take charge of the proper recording, monitoring and reporting of PROFEM programs and projects participated in by their respective educational institutions.
2. The heads of school, college or university, assisted by their respective full time YCAF coordinator or director shall see to it that a more effective, valid and accurate recording, monitoring and reporting of PROFEM data.
3. Monitoring of all activities/accomplishments of the school, college or university shall be coursed through the Regional MEC-PROFEM Secretariat at the respective MEC Regional Offices to ensure proper coordination to and from the field and to higher authorities.
4. National schools, agricultural colleges and state universities participating in the Dendro Thermal School Reforestation Program shall submit regular status reports to the regional MEC-PROFEM secretariat on their respective project operations. Monitoring shall be done by the respective MEC-PROFEM Regional Offices to ensure proper coordination to and from the field and to higher authorities.
5. Each school, college and university shall organize its chapter of National Youth Civic Action Service (NYCAS) Corps composed of all students participating in the ProfEM activities.

IV. PROGRAM IMPLEMENTATION:

A. Planning Phase (July, 1981)

1. Coordination conference with ProFEM national agencies representatives.
2. Coordinating conference with MEC-PROFEM agencies representatives.
3. Organization of MEC-PROFEM Executive Committee.

B. Preparation Phase (August, 1981)

1. Organization of MEC-PROFEM Task Force.
2. Issuance of MEC Order on MEC-PROFEM to the field.
3. Organization of MEC-PROFEM National Secretariat.
4. Organization of Regional/Division Secretariat and NYCAS corps.
5. Identification of permanent specific treeplanting site for respective school/division.
6. Preparation of MEC-PROFEM Calendar of Activities for 1981-1982.
7. Workshop conferences on the MEC-PROFEM Program Integration.
8. Dry-run of organization machinery (submission of ProFEM Data - National MEC-PROFEM Secretariat, Arroceros, Manila).

C. Implementation Stage (September 1981 - June 1982)

- a. Implementation of Calendar for 1981-1982
- b. Monitoring and recording of baseline ProFEM components data at the school, division and regional levels.
- c. Regular/monthly or after project reporting of ProFEM data to National MEC-PROFEM Secretariat.
- d. Evaluation of SY 1981-1982 MEC-PROFEM implementation (based on program requirements inclosed herewith)
- e. Reporting to the Office of Minister, Ministry of Education and Culture; National ProFEM Secretariat and Office of the President/Prime Minister.
- f. Training/information on program for implementors - MEC-PROFEM Coordinators and NYCAS Corps leaders.

D. Institutionalization Phase

- a. Implementation of 5 year Development Plan of MEC-PROFEM
- b. Implementation of 5 Year Human Resource Development Program for PROFEM implementors (coordinators and NYCAS Corps);
- c. Monitoring, recording and reporting of MEC-PROFEM program components;
- d. Implementation of the Rewards and Incentive System on PROFEM.
- e. Continuous evaluation of effectiveness program implementation.

MEC-PROFEM PROGRAM REQUIREMENTS
FOR SY 1981-1982

Program Components Minimum Requirements	School Levels Involved	Coordinating/ Support Agency
1. School Nursery - - total number of seedlings (10) per pupil/student enrolled in specific school	: all elementary and secondary public and private school.	: Bureau of Plant Industry and Bureau of Forest Development
2. School Orchard - - at least one hectare or 1,000 fruit trees planted	: all complete elementary and secondary public school.	: Bureau of Forest Development : B P I
3. Mini-Forest Park - at least one hectare for every park or 10,000 seedlings forest trees.	: For each school district municipality or city division	: BPI and BFD : FORI and Agricultural schools
4. School Tree Farm Agro-Forestry Project - - at least 10 hectares or 10,000 trees per hectare planted	: For each school division	: BPI and BFD
5. Dendro Thermal Reforestation Project - at least 5 hectare with 10,000 ipil-ipil trees per hectare.	: all national schools, colleges and universities	: National Electrification Adm. : BPI and BFD
6. National Youth Civic Action Service (NYCAS) Corps organization - at least 50 youth members per group/school	: all complete elementary, secondary, post secondary or college and university	: MEC-PROFEM

V. GENERAL PROVISIONS

A. Legal Basis: P.D. 1153 Provides:

1. Every citizen of the Philippines at least ten (10) years of age actually residing therein unless physically or mentally disabled to do so, shall plant one tree every month for five (5) consecutive years;
2. Citizens enrolled in any Philippine school from ten (10) to sixteen (16) years of age may only be required to germinate at least two seeds each month in containers and/or seedbeds in school nurseries;
3. Citizens seventeen (17) years of age and above shall plant the required number of trees in specific school areas designated;
4. In view of the conditions in Metropolitan and urban cities such as in Metro Manila and Metro Cebu, and in rural areas where there is inadequacy of treeplanting areas, compliance of school personnel and/or student population maybe in the form of collecting seeds or establishing nurseries, tree care or maintenance, conducting research and experimentation of methods of planting and or developing mini-parks within the city/urban communities;
5. Each school, district, division and region shall prepare a Tree Planting Plan for their respective student and personnel population. The plan shall contain among others, the following:
 - a. List of registered students/personnel;
 - b. Map or sketch showing planting site assignments of each person;
 - c. Projected schddule of planting, care and main-tenance of trees planted;
 - d. Seeds and seedling stock collection, acquisition/distribution scheme; and
 - e. Other information pertinent to tree planting activities.

6. The corresponding MEC-PROFEM Secretariat at various levels shall issue certificates in prescribed forms of Planting Survival and completion to students and school personnel when appropriate and upon request.
7. In recognition of outstanding accomplishments of individual students and/or school personnel administrators, groups or school organizations, government or non-government agencies towards the goals of PROFEM awards and incentives shall be given by the PROFEM National Council as follows:
 - a. NARRA Award - National, Regional, Provincial, municipal and school levels;
 - b. ProfEM Scholarship Grants; and
 - c. TOYS National and Regional Award for outstanding Treeplanting Action Program (TAP) performance for the year.
8. Each MEC-PROFEM Secretariat at various levels shall regularly observe the MEC-PROFEM Calendar released annually to insure proper coordination, monitoring and evaluation of the program nationwide.
9. Any student or school personnel who violates any provision of the P. D. 1153, including anyone who issues a false certificate of planting, completion and or survival, or fails to record or transmit a copy of such record to the MEC-PROFEM National Executive Secretariat without delay, shall be punished a five pesos or in a period of five years be disqualified to hold public office, to graduate from any curricular level or take the bar, board or civil service examination and to practice any profession licensed and regulated by the Supreme Court or the Professional Regulation Commission.
10. In case of violation by a student or school personnel the agency or school head shall exhaust all preventive and remedial administrative actions to encourage compliance with the decree.

VII. BUDGETARY OUTLAY

1. The Ministry of Education and Culture shall identify and utilize all existing budgetary outlay for specific PROFEM program components for the operation and maintenance of the program nationwide as indicated in Batasan Bilang Budgetary appropriation for 1981.
2. The MEC-PROFEM Executive Secretariat shall make the proper representation for separate budgetary outlay for MEC-PROFEM operations for succeeding years be made with the National PROFEM Council and the Ministry of the Budget to include coordination and monitoring of program components at the various levels.
3. The Ministry of Natural Resources through the Bureau of Forest Development and the PROFEM Council, the Philippine Wood Products Association and/or any other government or non-government agency shall include the necessary budgetary outlay for the annual PROFEM incentives and NARRA Awards.
4. The Dendro Thermal Project Financial Loan of P 3,000.00 for every hectare planted to ipil-ipil trees granted to qualified national schools, colleges and universities shall be granted directly by the National Electrification Administration (NEA) to corresponding grantees. This shall be for a period of 15 years with 4% interest per annum, with grace period of five years from the date of granting of loan. The fund shall be subject to general supervision of the MEC-PROFEM Executive Committee and subject to approval of NEA-Project Committee and deposited in trust in the name of the school to be disbursed on schedule and upon approval of MEC and NEA Dendro Thermal Committee.

Annex I 1981-1982 MEC-PROFEM CALENDAR

<u>DATE</u>	<u>ACTIVITY</u>	<u>ACTION PERSONS</u> <u>AGENCIES</u>
July 27	Organization of MEC-PROFEM National Executive Committee, Task Force and Secretariat	MEC-Central Office ProfFEM Agencies
July 30	Issuance of MEC-PROFEM Implementing Guidelines to field	MEC-PROFEM Secretariat
August 7	Organization of MEC-PROFEM Regional/Division Executive Committees and Secretariat	MEC Regional Offices ProfFEM Agencies
August 15	Organization of MEC School, Colleges and Universities MEC PROFEM Committees and Task Forces	Provincial
August 30	Deadline for submission of MEC PROFEM Secretariat, Committees and Action Program to National MEC-PROFEM Secretariat	Regional/Division MEC-PROFEM Secretariat
August 7-15	Identification of Division/Municipal District or city treeplanting area	E F D Division MEC- PROFEM Secretariat
August 15-20	Preparation of MEC-PROFEM Secretariat Treeplanting Plan and 1981-1982 Action Program	Regional/Division District MEC- PROFEM Secretariat
August 21	Deadline submission of Treeplanting area/site	MEC-PROFEM Secretariat
August 30-31	National MEC-PROFEM Work Conference, DAP, Tagaytay City	National/Regional Task Force

<u>DATE</u>	<u>ACTIVITY</u>	<u>ACTION PERSONS</u> <u>AGENCIES</u>
September 7	Launching of the National MEC-PROFEM Program	MEC-PROFEM National Secretariat Nationwide activity
September 11	Alay Sa Pangulo: Isang Puno, Isang Pusol	Nationwide activity
September 21	Tree Care Day (Inventory of Trees/Nursery) (First MEC-PROFEM Evaluation)	Nationwide
September 30	Deadline for submission of MEC-PROFEM report status	Nationwide
October 27 to November 15	Regional Leadership Youth Camp	Luzon/Visayas and Mindanao
December 7	"Alay Sa Magulang, Isang Puno, Isang Pusol" Treeplanting nationwide Division TOYS Award search	Nationwide
December 27	Deadline for submission of MEC-PROFEM report and Division MEC-PROFEM Awards nominees to Regional Office	Regional/Division MEC-PROFEM
January 14 to February 14, 1982	ASEAN-PROFEM International Youth Camp Development Program	
January 7, 1982	Regional MEC-PROFEM Awards Evaluation	MEC-PROFEM Central Office BFD-ProFEM
February 14, 1982	"Para Sa iyo, Mahal Ko, Isang Puno, Isang Pusol"	Nationwide

<u>DATE</u>	<u>ACTIVITY</u>	<u>ACTION PERSONS</u> <u>AGENCIES</u>
March 7, 1982	Deadline for submission of status report and regional nominees for the various MEC-ProFEM national awards	Nationwide
April 1982	Announcement of Alay Tanim National Winners Ceremonies	Mrs. Silvina Laya, Nutrition Health Center, MEC
May 3-26	6th Summer Leadership Institute on Youth Volunteer Management for MEC-ProFEM and YCAP Coordinators, Baguio City	ProFEM-BFD MEC-PROFEM YCAP Foundation
May 27	1982 National TOYS Awards Ceremonies, Philamlife Auditorium, Manila	MEC-ProFEM YCAP Foundation PhilamGen Philamlife
May 25	Deadline of submission of MEC-ProFEM Annual Report	Regional/Division MEC-PROFEM
June 7 to June 21, 1982	Regional Echo Work-Conference on Youth Volunteer Management for MEC-ProFEM and YCAP Coordinators	Regional/Division MEC-PROFEM
June 27, 1982	Alay Sa Bayan "Isang Puno, Isang Puso"	Regional/Division MEC-PROFEM

Annex 2

**GUIDELINES IN THE SELECTION OF SCHOOL
TREEPLANTING AREA PRIORITIES**

1. Treeplanting of fruit trees in areas within the school campus.
2. Mini-forest or parks or areas identified by Bureau of Forest Development as permanent treeplanting area for accessible to students and school population.
3. Roadside treeplanting areas including barangay, municipal and national highways.
4. School seedbank or nursery development project within the school campus.
5. Production of treeguards, markers and other equipment or tools for treeplanting, care and maintenance.

APPROPRIATION FOR MEC-PROFEM PROGRAMS
(Batas Pembansa Blg. 80)

KBI	:	AGENCY	:	ACTION AGENCY	:	AMOUNT (In Thousand Pesos)
1.	:	MEC-TAP	:	BFD-PROFEM	:	MEC-TAP : 250
2.	:	Alay Tanim	:	MEC	:	NHCC : 500
	:		:	MPW	:	MPW/NHCC : 3,475
3.	:	DENDRO Thermal Sch. Reforestation (Loan)	:	NEA	:	NEA/MEC-TAP : 10,000
4.	:	TATAG Maharlika)	:	MPH	:	MHS/MEC-TAP : 9,000
5.	:	YCAP Coordination Including Treeplanting Action Program:	:	MEC	:	MEC-TAP : 1,253
GRAND TOTAL - - - - -						P 24,478 Thousand Pesos

MEC-PROFEM PARTICIPANTS 1981-1982

Region	Elementary Grade IV-VI	Secondary First -Fourth	College	TOTAL
I	280,424	271,111	83,953	635,488
II	163,453	112,990	20,774	297,217
III	367,137	307,364	57,658	732,159
IV	452,174	381,805	56,093	890,072
V	286,730	183,371	48,124	518,225
VI	339,077	261,133	94,343	694,553
VII	247,457	180,295	112,823	540,575
VIII	194,770	124,786	28,208	347,764
IX	158,204	92,445	33,873	284,522
X	196,763	134,293	58,348	389,404
XI	242,227	180,927	60,691	483,845
XII	159,909	84,645	38,033	282,587
NCR	399,409	451,709	489,182	1,340,300
TOTAL	3,481,734	2,766,874	1,182,103	7,430,711
Percentage	46.9	37.2	15.9	100%

Prepared by:

Office of Deputy Minister
for Operations and Administration
Ministry of Education and Culture
Manila
July 1981

REGIONAL SCHOOL MEC PERSONNEL
1980-1981

Region	Teachers		ADMINISTRATORS						GRAND
	Elem. & Sec.	Head Tea.	Prin- cipals	Dist. :Supv.	Supt.	Asst. :Supt.	Sub- :Total	TOTAL	
I	28,273	784	943	178	11	15	1,931	30,204	
II	15,390	332	341	85	7	9	774	16,164	
III	31,671	497	928	154	9	13	1,601	33,272	
IV	43,449	763	1162	216	16	17	2,174	45,623	
V	25,332	609	541	143	9	9	1,311	26,643	
VI	35,906	927	799	178	14	18	1,936	37,842	
VII	23,736	443	513	128	9	6	1,100	24,836	
VIII	22,292	526	409	128	9	7	1,079	23,371	
IX	16,132	283	364	86	9	8	750	16,882	
X	16,566	457	366	95	13	9	940	17,506	
XI	18,807	336	380	83	7	11	817	19,624	
XII	15,631	307	331	82	9	8	737	16,368	
NCR	37,099	42	584	109	4	10	749	37,848	
TOTAL	230,284	16,306	17,661	1,665	126	132	15,899	246,183	
Percentage	95.41	39.7	48.2	10.5	1.6		4.59	100%	

Prepared by:

Office of Deputy Minister
for Operations and Administration
Ministry of Education and Culture
Manila
July 1981

DISTRIBUTION OF ELEMENTARY AND SECONDARY
SCHOOL TEACHERS
1980 - 1981

REGION	ELEMENTARY	SECONDARY		Total	Grand Total
		Public	Private		
NCR	22,893	10,537	3,349	14,216	37,099
Reg. I	22,705	3,824	1,714	5,538	28,273
Reg. II	11,407	2,542	1,441	3,983	15,390
Reg. III	23,865	3,672	4,134	7,806	31,671
Reg. IV	32,149	5,941	5,259	11,300	43,449
Reg. V	20,426	2,873	2,033	4,906	25,332
Reg. VI	27,651	6,069	2,186	8,255	35,906
Reg. VII	19,974	2,122	1,640	3,762	23,736
Reg. VIII	18,418	3,023	851	3,874	22,292
Reg. IX	13,144	2,135	853	2,988	16,132
Reg. X	13,299	1,750	1,517	3,267	16,566
Reg. XI	15,205	2,114	1,488	3,602	18,807
Reg. XII	12,755	1,591	1,285	2,876	15,631
GRAND TOTAL	253,913	48,223	23,150	76,373	330,284

GRAND TOTAL = 330,284

Prepared by:

Office of Deputy Minister
for Operations and Administration
Ministry of Education and Culture
Manila
July 1981

DISTRIBUTION OF TEACHERS IN THE TERTIARY LEVEL

1980-1981

Region	Male	Female	Total
I	1,769	2,357	4,126
II	522	545	1,067
III	888	1,144	2,032
IV	694	1,240	1,934
V	730	1,243	1,973
VI	1,175	1,973	3,148
VII	1,644	1,998	3,642
VIII	605	838	1,443
IX	344	444	788
X	407	706	1,113
XI	478	806	1,284
XII	535	754	1,289
NCR	697	1,240	1,937
TOTAL	10,488	15,298	25,786
Percentage	40.67	59.33	100%

Prepared by:

Office of Deputy Minister
for Operations and Administration
Ministry of Education and Culture
Manila
July 1981

PROJECTED DISTRIBUTION OF MEC-PROFEM SCHOOL
NURSERIES AND SEEDLINGS
FOR SY 1980-1981

REGION	Elem.	High Sch.	Colleges	Total No. of School Nurseries	In Thousand Seedlings
I	2,833	455	24	3,288	32,880
II	2,128	158	19	2,286	22,860
III	2,328	230	22	2,558	25,580
IV	3,636	431	36	4,067	40,670
V	2,721	280	21	3,001	30,010
VI	2,950	360	44	3,310	33,100
VII	2,504	152	21	2,656	26,560
VIII	3,102	278	39	3,380	33,800
IX	1,865	125	17	1,990	19,900
X	2,184	209	19	2,393	23,930
XI	1,993	192	14	2,185	21,850
XII	1,624	131	9	1,755	17,550
NCR	443	111	13	554	5,540
TOTAL	30,311	3,112	298	33,423	334,230

Prepared by:

Office of Deputy Minister
for Operations and Administration
Ministry of Education and Culture
Manila
July 1981