

Republika ng Pilipinas
(Republic of the Philippines)
MINISTRI NG EDUKASYON AT KULTURA
(MINISTRY OF EDUCATION AND CULTURE)
Maynila

November 21, 1979

MEC O R D E R
No. 70, s. 1979

GUIDELINES ON THE MATEA PROGRAM

To: Bureau Directors
Regional Directors
Schools Superintendents
All Others Concerned

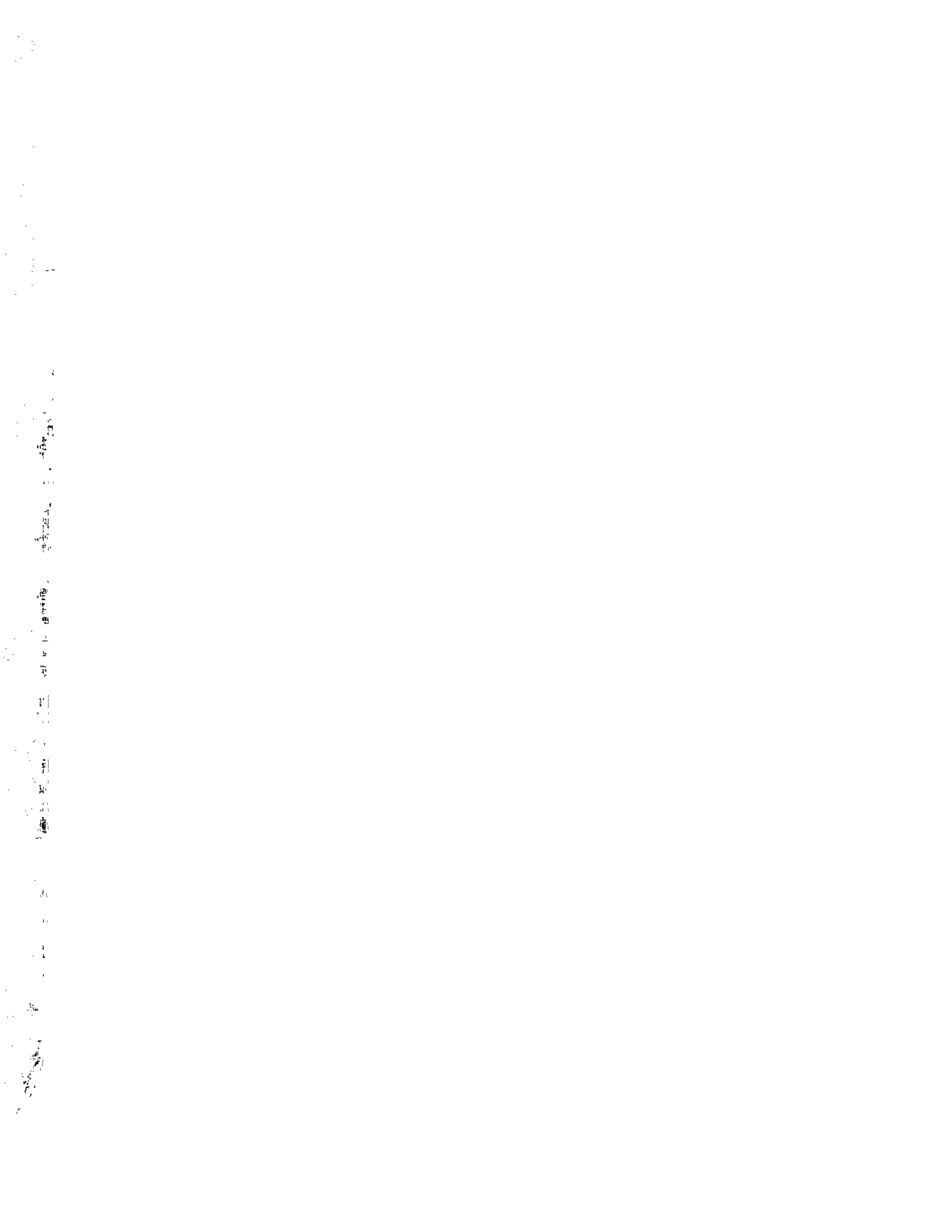
1. The Master of Arts in Teaching Elementary Agriculture (MATEA) program has now been in operation for several years. The program's administration and supervision has been, throughout its operation, conducted on a different basis from that of other graduate programs. Moreover, the circumstances obtaining when the program was initiated have now drastically changed.

2. In view of the need to review the program, and to institute changes where necessary, the following directive is hereby issued for immediate compliance:

Effective the first semester of the school year 1980-81, no new students shall be enrolled or accepted for enrollment in the MATEA course.

3. Effective the SY 1980-81, the MATEA program shall be governed by the following guidelines:

- a. The direct management responsibility of the Office of the Minister, MEC, over the MATEA program shall cease and the same shall be placed and vested in the school administration concerned;
- b. The requirements for the operation of the program shall be strictly in accordance with the prescribed rules and standards for graduate education as embodied in B.Pr.S. Circular No. 10, s. 1974;
- c. The matter of tuition and other school fees related to the program shall be regulated as school funds based on Presidential Decree No. 451 and its implementing rules in the case of private colleges and universities, and the enabling legislations and other applicable laws with respect to chartered state colleges and universities and other state-supported post-secondary institutions; and



d. The supervision and regulation of the MATEA program in duly authorized institutions of learning shall be in accordance with the provisions of Department Order No. 22, s. 1975, and the applicable laws or policies with respect to chartered and/or state supported institutions of learning.

4. Conformably to the foregoing guidelines, the following directives are likewise issued for implementation effective SY 1980-81:

- a. All MATEA offices at all administrative management levels of the Ministry, e.g., national, regional, division and district offices, shall be abolished;
- b. All detailed personnel to the MEC MATEA offices shall be returned to their respective offices and stations and shall assume their regular duties and functions: and
- c. The giving of monetary benefits or incentives to any MEC personnel from MATEA funds for their involvement in the administration and/or supervision of the MATEA program shall not be allowed.

5. Strict compliance with this Order is hereby enjoined.

(SGD.) ONOFRE D. CORPUZ
Minister of Education and Culture

References:

Department Order: (No. 22, s. 1975)
B.Pr.S. Circular: (No. 10, s. 1974)

Allotment: 1-2-3-4--(D.O. 1-76)

To be indicated in the Perpetual Index
under the following subjects:

CHANGE /
FEES /
FUNDS /
OFFICIALS /

RULES & REGULATIONS /
SCHOOLS /
STUDENTS /
VOCATIONAL EDUCATION /

