

Republika ng Pilipinas
(Republic of the Philippines)
KAGAWARAN NG EDUKASYON AT KULTURA
(DEPARTMENT OF EDUCATION AND CULTURE)
Maynila

August 29, 1977

DEPARTMENT ORDER
No. 45, s. 1977

REGULATIONS IMPLEMENTING P.D. 1153 REQUIRING
THE PLANTING OF TREES BY CITIZENS
OF THE PHILIPPINES

To: Bureau Directors
Regional Directors
Chiefs of Services and Heads of Units
Schools Superintendents
Heads of Private Schools, Colleges
and Universities

1. Inclosed is a copy of the regulations implementing Presidential Decree No. 1153, entitled "Requiring the Planting of One Tree Every Month for Five Consecutive Years by Every Citizen of the Philippines." The regulations have been issued as Administrative Order No. 1 of the Presidential Council for Forest Ecosystem Management. Also inclosed are forms to be accomplished by the school officials, teachers, and students who have complied with the requirements of the aforementioned Administrative Order.
2. This Department Order supplements Department Order No. 29, s. 1977, the implementing guidelines of the DEC Tree-planting Action Program (TAP).
3. It is desired that the contents of this Department Order be given as wide publicity as possible in the field.

(SGD.) JUAN L. MANUEL
Secretary of Education and Culture

Incls.:
As stated

References:

Department Order: (No. 29, s. 1977)
Department Memorandum: No. 141, s. 1977

Allotment: 1-2-3-4---(D.O. 1-76)

To be indicated in the Perpetual Index
under the following subjects:

BUREAUS & OFFICES	SCHOOLS
CAMPAIGN (Food Production)	SUPERINTENDENTS
OFFICIALS	VOCATIONAL EDUCATION
PROGRAM, SCHOOL	
RULES & REGULATIONS	



Republic of the Philippines
PRESIDENTIAL COUNCIL FOR FOREST ECOSYSTEM MANAGEMENT
Diliman, Quezon City

PROFEM ADMINISTRATIVE ORDER)
No. 1)
Series of 1977)

SUBJECT: REGULATIONS IMPLEMENTING PRESIDENTIAL
DECREE NO. 1153 REQUIRING THE PLANTING
OF ONE TREE EVERY MONTH FOR FIVE CON-
SECUTIVE YEARS BY EVERY CITIZEN OF THE
PHILIPPINES.

Pursuant to Section 5 of Presidential Decree No. 1153
the following rules and regulations are hereby promulgated for the
information and guidance of all concerned:

SECTION 1. Title - These regulations shall be known as
"The Citizens' Five-Year Tree Planting Regulations".

SECTION 2. Scope - These regulations shall apply to all
able-bodied citizens of the Philippines at least ten years of
age and residing therein.

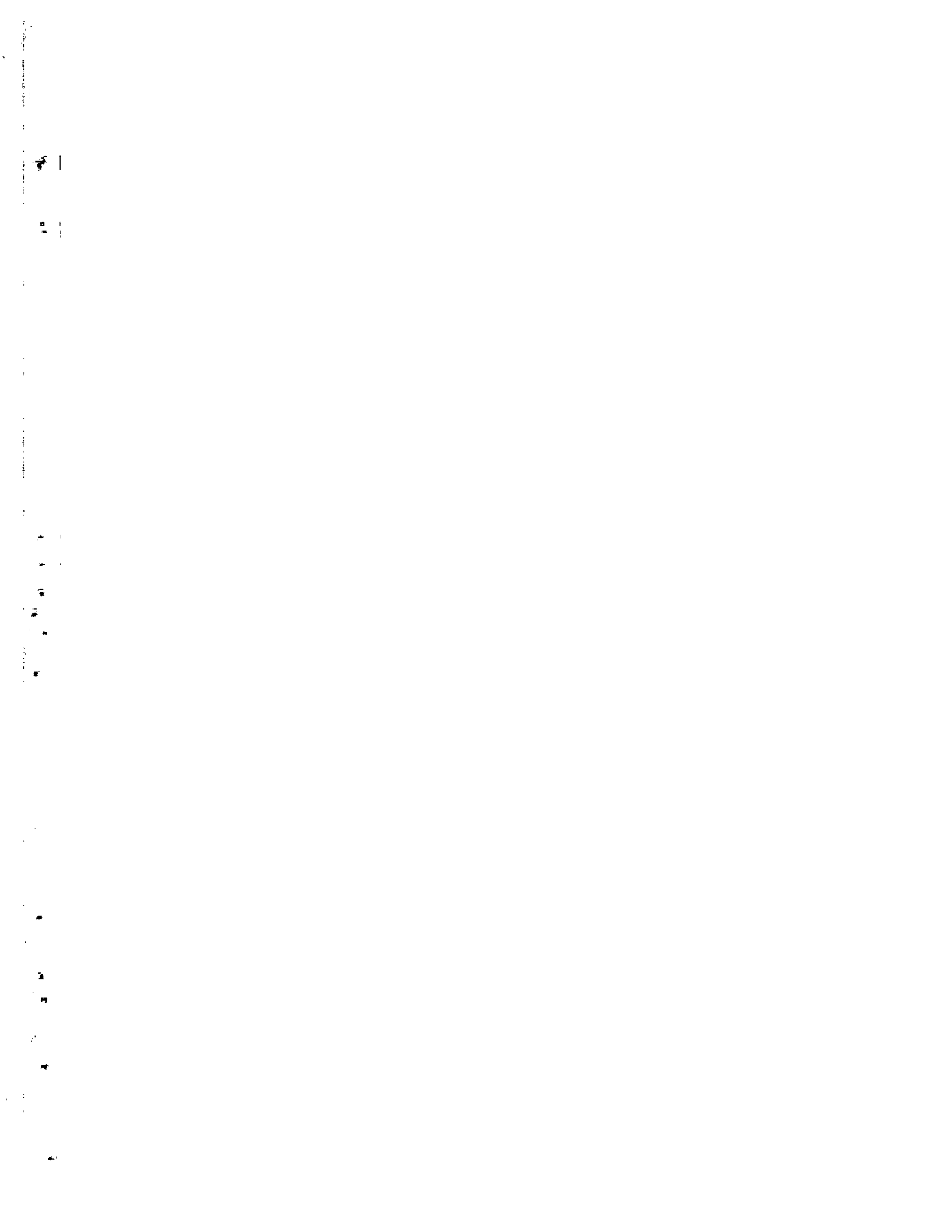
SECTION 3. Definitions - As used in this Administrative
Order, the following words and phrases are defined as follows:

- a) Care and maintenance - The process of tending,
cultivating, weeding, watering and protecting planted
seedlings from any form of destruction to assure
their survival and continuous growth.
- b) Citizen - A citizen of the Philippines at least ten
(10) years of age, who is not physically and mentally
disabled to plant trees as required by Presidential
Decree No. 1153.
- c) Civil and military reservations - refer to those
lands which are utilized for civil and military
purposes.
- d) Council - Presidential Council for Forest Ecosystem
Management (PROFEM National Council).
- e) Decree - Unless otherwise specified shall refer to
PD No. 1153.

- f) Diseased or defective trees - Trees that have been affected by destructive organisms which result in their deformation or death.
- g) Forest lands - Include the forest, the permanent forest or forest reserves, and forest reservations.
- h) Forest trees - Trees which grow naturally in a forest stand or artificially in a plantation and are grown specifically for timber production or for other economic uses such as essential oils, resin, feed meals and others.

PLANNING GUIDE (To be used as guide for persons assigned to prepare tree planting plans)

1. The planting activity of every citizen should be indicated in the tree planting plan prepared by the office/organization where he registered.
2. Subdivide the area into blocks, such that each block shall have sufficient area to accommodate the yearly tree planting activities of the employee, members or residents of the office, organization, corporation, province, municipality.
3. These blocks shall be subdivided into compartments and shall be further subdivided into sub-compartments. Roadsides and family lots maybe considered as blocks.
4. The compartments can be assigned to each division, barangay or office units as the case may be, while sub-compartments shall be assigned to each individual member of division, barangay or office unit. Naturally, each family lot to be planted with trees may be a sub-compartment of several family lots.
5. A map or sketch with suitable scale preferably 1:10,000 indicating the blocks, compartments and sub-compartments indicating the division, barangay or office units as well as names of individual citizen shall be submitted, using appropriate symbols, numbers or legends to be accommodated in the map.
6. Schedule planting of trees within the rainy season months.
7. Young seedlings when transplanted to the field need watering to make it grow. During rainy season, however, watering is no longer necessary.



8. Fencing is either done for an individual tree or group of trees. The former is commonly known as "Tree Guard". The latter is done to enclose the whole block with fence, either using slit bamboos or wood planks nailed in posts, or barbed wires.
9. Patrolling is done from time to time to check intrusion of astray animals such as cows and carabaos in the plantation area. At the same time, occurrence of pests and diseases is easily detected. During summer, patrolling is necessary to prevent occurrence of fire in the plantation.
10. Firebreak, which is a strip of about 10 meters wide cleared of grass and inflammable materials passing atop the ridge or along the boundary of the plantation to prevent the spread of fire in case burning occurs, is constructed in suitable areas during summer. In some cases, firebreaks are planted to camote, ipil-ipil and other fire resistant plants to make its fire controlling function permanent.
11. Replanting is the process of replacing dead or diseased seedlings in the plantation with a healthy and robust plant to insure uniform distances and growth of trees planted thereat. This should be done as soon as the plant is discovered to be gone/dead.
12. Weeding of tree seedlings planted should be preferably done every two months.
 - i) Fruit-bearing trees - Trees which are grown specially for the purpose of utilizing their fruits for food or other purposes.
 - j) Graduation - Completion of an educational course in primary, elementary, secondary, vocational school, or college.
 - k) Grazing lands or pasture lands - Refer to portions of the public domain which have been set aside in view of the suitability of their topography and vegetation for the raising of livestock.
 - l) Mineral lands - Refer to those lands of the public domain which have been classified as such by the Secretary of Natural Resources in accordance with prescribed and approved criteria, guidelines and procedure.

- m) Ornamental trees - Trees which are grown specifically for decorative purposes.
- n) Parks - Include provincial, city, municipal and municipal district public parks, playgrounds, play fields and other areas devoted to public recreation. The term includes also national park areas proclaimed as such not only for their recreational values but also for their historical significance, aesthetic value and other features useful for scientific studies necessitating the preservation of the areas in a state of wilderness.
- o) Planting - The act or process of setting seeds or seedlings in the ground for cultivation.
- p) PROFEM - Program for Forest Ecosystem Management.
- q) Replanting - A process of replacing dead or deceased plants previously planted in the field or plantation.
- r) Resettlement lands - Refer to those lands which are utilized for resettling people like kaingeros, illegal forest occupants and the like.
- s) Roadside - A strip of land adjoining a road or highway.
- t) Shade trees - Trees with wide crowns used as natural shade.
- u) Tree - A woody perennial plant having a single main axis or stem (trunk) usually exceeding ten feet in height and devoid of branches below but bearing a head of branches and foliage or crown of leaves at the summit.

SECTION 4. Who shall plant trees - Every citizen of the Philippines at least ten (10) years of age, actually residing therein, unless physically or mentally disabled to do so, shall plant one tree every month for five (5) consecutive years: Provided, That any citizen who, being up-to-date in complying with the obligation to plant one tree every month, should plant more than one tree in a given month, shall be credited with the additional tree or trees so planted, at the rate of one month for each additional tree.



SECTION 5. Registration with office/individual - Every citizen shall register with whichever office/individual assigned to monitor tree planting activities, as indicated in Section 12, is most accessible and convenient to him. Registration shall be effected not earlier than thirty (30) days nor later than sixty (60) days after the effectivity of this Administrative Order. Citizens who will turn ten (10) years of age after the effectivity of this Administrative Order, shall be registered within thirty (30) days after their 10th birthday. The obligation to register citizens below the age of 15 years shall devolve upon their parents, guardians or persons having actual care and custody of such citizens. The individual charged with registration shall employ the necessary means to publicize as widely as possible the requirement to register.

Until a different form or forms shall have been prescribed, registration shall be accomplished by filling Forms 5 and 5-A.

In case of transfer of registration, death, or physical or mental disability of the citizen, notice thereof shall be given to the office/individual with whom such citizen has been registered: Provided, That proof of death or physical or mental disability, or the reason for the transfer, may be required to be presented.

A citizen may plant trees prior to registration and the trees so planted shall be credited to him for purposes of compliance with the Decree, provided he presents proof of his having planted such trees and that such trees were planted not earlier than June 6, 1977.

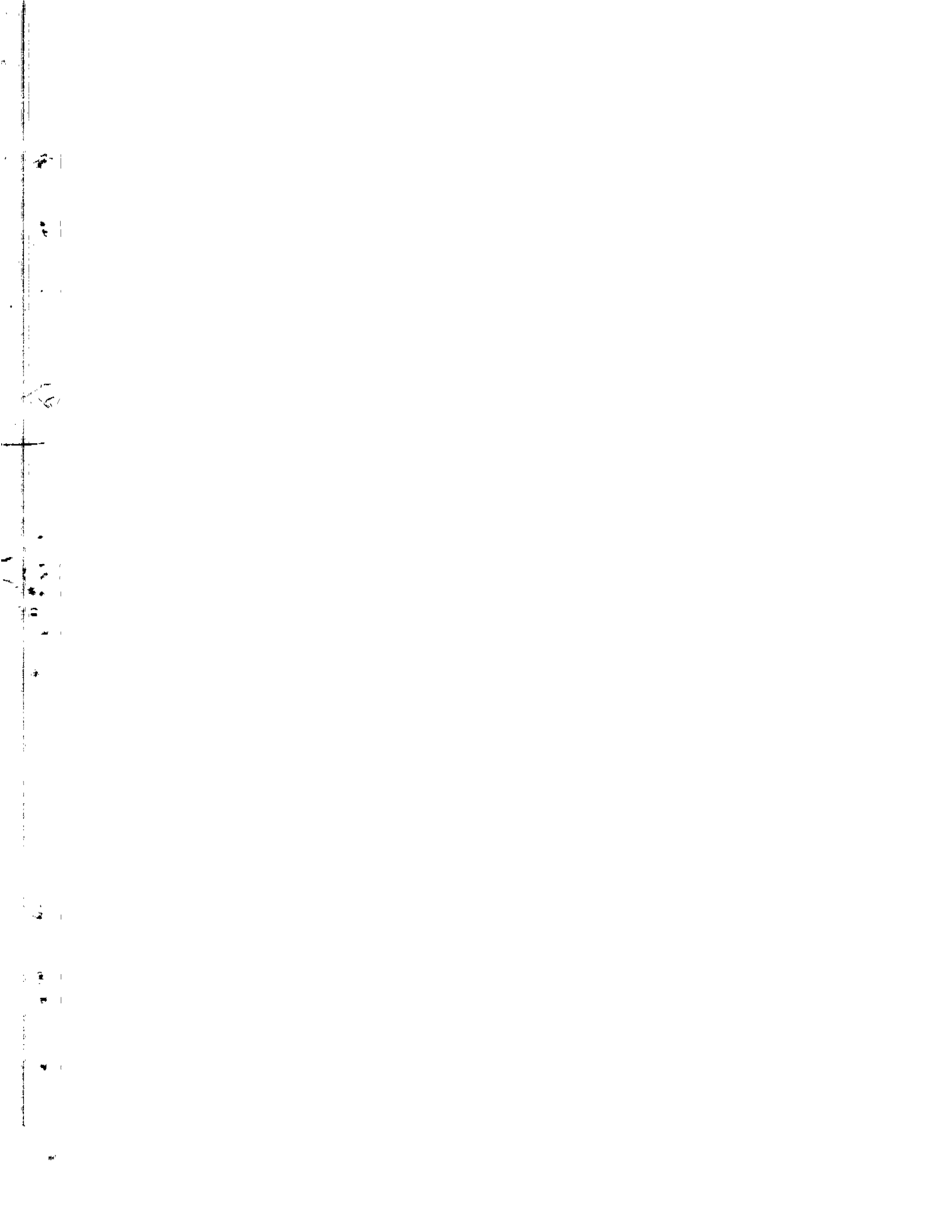
SECTION 6. Categories of citizens required to plant trees - Citizens required to plant trees under this Administrative Order shall be categorized as follows:

- a) National government employees;
- b) Local government employees;
- c) Employees of private corporations, partnerships, associations or single proprietorships;
- d) Employees of government-owned and/or controlled corporations;
- e) Students of primary, elementary, secondary, vocational schools, colleges and universities, whether public or private;
- f) Residents of special institutions like the boys town, convents, seminaries, leper colonies, inmates of penal colonies, etc.
- g) Barangay officials and members, citizens who are self-employed or unemployed, out-of-school youth, and all others not mentioned above.

SECTION 7. Tree Planting Plan - Within sixty (60) days after the effectivity of this Administrative Order and at least once annually thereafter, a tree planting plan shall be prepared by the following:

- a) For national government employees - by the respective heads of departments and bureaus, regional, provincial and district offices of such bureaus.
- b) For local government employees - by the respective heads of provincial, city or municipal government offices.
- c) For employees of private corporations, cooperatives, partnerships, associations and/or single proprietorships - by their respective presidents ~~in the case of corporations, cooperatives, associations; managing partners in case of partnerships; and owners in case of single proprietorships.~~
- d) For employees of ~~government-owned and/or controlled~~ corporations by the respective heads of these corporations.
- e) For students of primary, elementary, secondary, ~~vocational schools~~, colleges and universities, whether public or private - by the respective heads of these educational institutions.
- f) For residents of special institutions such as boys town, convents, seminaries, leper colonies, inmates of penal colonies, and the like - by the heads of the institutions concerned, and
- g) For barangay officials and members, citizens who are self-employed or unemployed, out-of-school youths and all others not mentioned above - by the respective barangay captains.

In view of circumstances distinctly attendant to Metropolitan Manila, such as population density, high urbanization, and zoning and settlement programs, the Metropolitan Manila Commission may formulate, adopt and implement for the Metropolitan Manila Area such other/additional planning, planting, monitoring and reporting systems and procedures as may be necessary to attain the objectives of the Decree.



The tree planting plan shall contain, among others, the following information:

- a) List of registered citizens;
- b) Map or sketch showing planting site assignments of each person;
- c) Projected schedule of planting, care and maintenance of trees planted;
- d) Seeds and/or seedling stock collection and acquisition/distribution scheme; and
- e) Other information pertinent to tree planting activities.

Trees planted in compliance with the Decree but prior to the submission of the tree planting plan shall be indicated in the plan as trees already planted.

The prepared plan shall be submitted to either the PROFEM Regional Council, composed of regional representatives of PROFEM National Council members or their designees who shall elect a chairman among themselves; PROFEM Provincial Council, composed of the members of the Provincial Development Council, headed by the provincial governor; PROFEM City or Municipal Council, composed of the City or Municipal Development Council, headed by the Mayor; PROFEM Barangay Council, composed of the Barangay Council, headed by the barangay captain, whichever is more accessible to the individual mentioned in the first paragraph (a) to (g) of this section.

The PROFEM council shall, at each level, maintain updated control maps indicating tree planting areas, both proposed and actually planted.

SECTION 8. Trees to be planted - Trees to be planted shall be fruit-bearing, shade, ornamental or forest trees, and the same shall be taken care of for at least two years after each planting and replaced if the same die, are diseased or are defective.

SECTION 9. Where to plant, identification of planter - Citizens whose families own lands may plant trees in lands or lots owned by their families. Citizens whose families hold a lease contract over a parcel of land may plant trees in the area under lease with the consent of the owner thereof. Citizens who are landless may plant trees in lands which are part of public grounds or places such as plazas, schools, markets, roadside, parks or lands of the public domain designated by the PROFEM Regional, Provincial, City, Municipal, or Barangay Council: Provided, That where no PROFEM Council is yet organized in the provincial, city, municipal or barangay level pursuant to Letter of Instructions Nos. 423 and 424,

~~the governor, municipal mayor, city mayor or barangay captain~~ shall act instead of the PROFEM Provincial, Municipal, City and Barangay Council, respectively. If the above-mentioned areas are not available, the BFD district office concerned shall, upon being so informed, set aside sufficient area of accessible open/denuded lands for such purpose, and said lands shall either be forest lands, grazing or pasture lands, mineral lands, resettlement lands, civil or military reservations.

Students, military personnel, private and government employees and inmates of penal colonies, may also plant in their respective school campuses or offices or institutional compounds with the consent of the authorities concerned. Employees of a timber licensee, and members of their families, may plant in the concession area of the licensee and the same shall be reported to the PROFEM Provincial, City, Municipal, or Barangay Council having jurisdiction over the area.

The individual required to prepare the tree planting plan and to monitor the tree planting activities of citizens of various categories indicated in Sections 7 and 12, respectively, shall devise means of properly identifying the planter of each tree and the date the tree was planted.

Individuals designated to prepare a planting plan shall schedule the planting of trees according to the following order of priority, where applicable:

Priority 1 - open areas within watersheds that support or are intended to support infrastructure facilities such as irrigation, hydroelectric dams and water reservoirs;

Priority 2 - open areas within public alienable or disposable lands, public forests and pasture lands;

Priority 3 - privately owned lands that are open and lying idle;

Priority 4 - parks, school grounds, civil and military reservations, roadsides, and communal forests;

Priority 5 - family residential lots and backyards;
and

Priority 6 - areas other than the above.

Provided, That in the case of areas covered by priority 2, the concessionaires/leasees concerned shall first be consulted and the cost of planting and maintenance shall be borne by such leasees/concessionaires: Provided, further, That the

13

14

15

16

17

18

19

20

21

22

23

24

consent of the owners of lands mentioned in priority 3 shall first be obtained and the cost of planting, and maintenance shall be charged to such owners.

SECTION 10. Source of seedlings for planting - For the current year (CY 1977), the Bureau of Forest Development, thru its different forest nurseries, shall provide all citizens who desire to plant trees with seedlings of forest trees; the Bureau of Plant Industry and the Bureau of Agricultural Extension shall provide them with seedlings of ornamental trees and fruit-bearing trees; the Philippine Coconut Authority will provide them with coconut seedlings; and the Department of Education and Culture, thru its school nurseries, shall provide seedlings to students.

Starting with CY 1978, all provinces, cities, municipalities, barangays and schools shall, with the assistance of the BFD, BPI and BAExt on the choice of species and nursery operation practices, raise their own tree seedlings. Compliance with Memorandum Circular No. 985 of the Office of the President, dated May 27, 1977, requiring all provincial governors, city/municipal mayors and barangay captains to maintain plant nurseries within their respective localities, shall, in their respective cases, be considered compliance with the provisions of this section.

SECTION 11. Coordination of the tree planting activities of all citizens concerned - PROFEM Regional, Provincial, City, Municipal and Barangay Councils shall coordinate the implementation of this Administrative Order at appropriate levels. The individuals mentioned in Sections 7, 12 and 13 hereof shall take charge of the registration of citizens required to plant trees, including the preparation of the necessary forms, and shall be responsible for the preparation of the tree planting plan and the reporting and monitoring of tree planting activities; Provided, That progress reports shall be submitted every month to the nearest appropriate PROFEM Council.

SECTION 12. Monitoring of tree planting activities - The PROFEM National Council shall, through its national, regional, provincial, city, and municipal secretariats, monitor the implementation of the Decree in their respective areas based on the plan prepared and submitted under Section 7 and other guidelines that may be promulgated.

The tree planting activity of each citizen shall be monitored as follows:

- a) For national government employees - by the respective heads of departments, agencies, and bureaus, regional, provincial, and district offices of such agencies and bureaus.

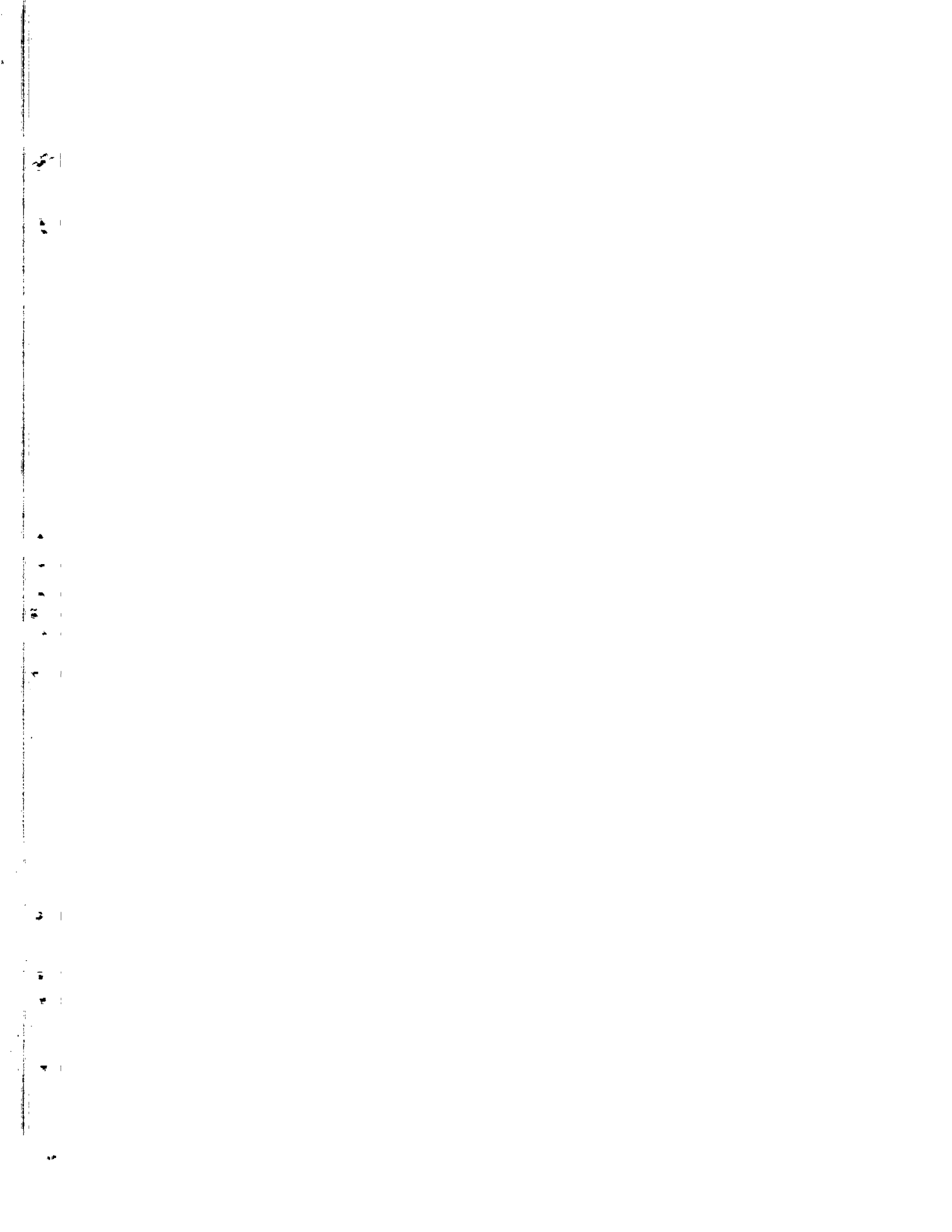
- b) For local ~~government~~ employees - by the respective heads of the provincial, city and municipal officers.
- c) For employees of private corporations, partnerships, cooperatives, associations or single proprietorships - by the respective presidents in case of corporations, cooperatives, and associations; managing partners in case of partnerships; owners in case of single proprietorships, in coordination with the Department of Labor and the provincial governor, municipal mayor, city mayor or the barangay captain as the case may be.
- d) For employees of government-owned and/or controlled corporations - by the respective heads of corporations.
- e) For students of primary, elementary, secondary, vocational schools, colleges and universities, whether public or private - by the respective heads of the educational institutions.
- f) For residents of special institutions such as boys town, convents, seminaries, leper colonies, inmates of penal colonies, and the like - by the heads of the institution concerned, and
- g) For barangay officials and members, and citizens who are self-employed or unemployed, out-of-school youths, and all others not mentioned above - by the respective barangay captains:

Provided, That the above-mentioned individuals may, in writing, deputize their representatives to verify and/or inspect tree planting activities.

SECTION 13. Reporting Scheme - Every citizen shall, monthly, report his activities relevant to the implementation of the Decree to the individual assigned to monitor him as herein above provided, for proper accreditation and/or certification or advice.

These reports shall be consolidated and summarized and submitted quarterly to the Chairman of the PROFEM Council concerned.

At each level, barangay, municipal, city, provincial, or regional, the quarterly reports shall be consolidated and



thereupon, forwarded to the PROFEM National Secretariat for final consolidation and submission to the President of the Philippines.

SECTION 14. Certificates of planting, survival and completion - The individual designated in section 12 to monitor citizens of various categories, or their respective deputies (deputization of whom shall be made in the prescribed form) shall issue to a citizen, when appropriate and upon request, a Certificate of Planting and a Certificate of Survival, the latter to be issued if the tree survives at least two years after its planting. Certificate of Completion shall likewise, be issued to any citizen who has completed the five-year planting of trees as envisioned by the Decree. These certificates shall be accomplished in the prescribed forms.

SECTION 15. Certificate required - Effective CY 1978, the corresponding Certificate of Planting, Certificate of Survival, or Certificate of Completion, as the case may be, shall be required to accompany any request or application of a citizen to acquire or enjoy any privilege granted exclusively to citizens of the Philippines, such as the acquisition either through sale, free patent, homestead, or lease of public lands, enjoyment of a franchise to own or operate a public utility or the grant of a lease, license or a privilege involving natural resources, to hold public office, to graduate from any educational institution at all levels, to take any bar, board or civil service examination, and to practice any profession licensed and regulated by the Supreme Court or the Professional Regulation Commission.

In any case when such request or application is granted or approved without the said corresponding certificate or certificates, the approving official shall record the reason or reasons for approval notwithstanding the absence of said certificate, and a copy of said record shall without delay be transmitted to the PROFEM National Council. On the other hand, should it appear that there has been a violation of the Decree, the official concerned shall at once refer the matter to the appropriate prosecution authorities.

SECTION 16. Penalties - Any person who violate any provision of the Decree or of this Administrative Order, including any one who issues a false Certificate of Planting, Certificate of Survival and/or Certificate of Completion, or fails to record the reason or reasons for the grant or approval of a request or application specified in Section 15 hereof, or fail to transmit a copy of such record to the PROFEM National Council without delay, or fails to refer or report the matter to the appropriate prosecution authorities should it appear that there

has been a violation of the Decree, shall be punished with a fine of not more than one thousand pesos or, in appropriate cases, with disqualification to acquire or enjoy any privilege granted exclusively to citizens of the Philippines, such as the acquisition either through sale, free patent, homestead, or lease of public lands, enjoyment of a franchise to own or operate a public utility or the grant of a lease, license or a privilege involving natural resources; and for a period of five years be disqualified to hold public office, to graduate from any educational institution at all levels, to take any bar, board or civil service examination, and to practice any profession licensed and regulated by the Supreme Court or the Professional Regulation Commission.

SECTION 17. This Administrative Order shall take effect on July 7, 1977.



Republic of the Philippines
Presidential Council for Forest Ecosystem Management

CERTIFICATE OF PLANTING NO. _____

TO WHOM IT MAY CONCERN:

This is to certify that Mr./Miss/Mrs. _____
_____ years old and member/employee/student of _____

(Name of institution, office, school, barangay, etc.)

located at _____
(Address of institution, office, school, barangay, etc.)

has planted as of this date the required number of trees as follows:

No.	Species	Date Planted	Site Planted

This certificate is issued upon request of Mr./Miss/Mrs.
_____ on this _____ day of _____,
19 ____ at _____,
in accordance with PD No. 1153.

(Certifying Officer)

(Position)

(Address)

7

Republic of the Philippines
Presidential Council for Forest Ecosystem Management

CERTIFICATE OF PLANT SURVIVAL NO. _____

TO WHOM IT MAY CONCERN:

This is to certify that Mr./Miss/Mrs. _____

_____, _____ years old and member/employee/
student of _____

(Name of institution, office, school, barangay,

_____) has the following tree surviving out of those planted
etc.)

by him/her in connection with P.D. No. 1153 as follows:

<u>No.</u>	<u>Species</u>	<u>Date Planted</u>	<u>Site Planted</u>	<u>Condition</u>
_____	_____	_____	_____	_____
_____	_____	_____	_____	_____
_____	_____	_____	_____	_____
_____	_____	_____	_____	_____
_____	_____	_____	_____	_____

This certificate is issued upon request of Mr./Miss/
Mrs. _____ on this _____ day of _____,
19 ____ at _____,
in accordance with PD 1153.

(Certifying Officer)

(Position)

(Address)

(To be issued only 2 years after each planting)



Republic of the Philippines
Presidential Council for Forest Ecosystem Management

CERTIFICATE OF COMPLETION NO. _____

TO WHOM IT MAY CONCERN:

This is to certify that Mr./Miss/Mrs. _____

_____, _____ years old and member/student/employee of

(Name of institution, office, barangay, school, etc.)

located at _____
(Address of institution, office, school, barangay, etc.)

has completed planting and maintaining the required number of trees
from year _____ to year _____ as required under PD 1153.

This Certificate is issued upon request of Mr./Miss/Mrs.

_____ on this _____ day of _____

_____, 19 _____ at _____

in accordance with PD 1153.

(Certifying Officer)

(Position)

(Address)

Republic of the Philippines
Presidential Council for Forest Ecosystem Management

Date _____

Mr. _____

Pursuant to Sec. 12 of PROFEM Administrative Order No. 1 series of 1977, you are hereby designated as deputy of the undersigned to supervise and monitor tree planting activities of

(Name of institution, office, school, barangay, etc.)

located at _____
(Address of institution, office, school, barangay,

_____ and to issue Certificate of Planting, Survival and etc.)

Completion to members/employees/students/etc. of the herein-named institution/office/barangay/school, etc. who have complied with the requirements of PD No. 1153.

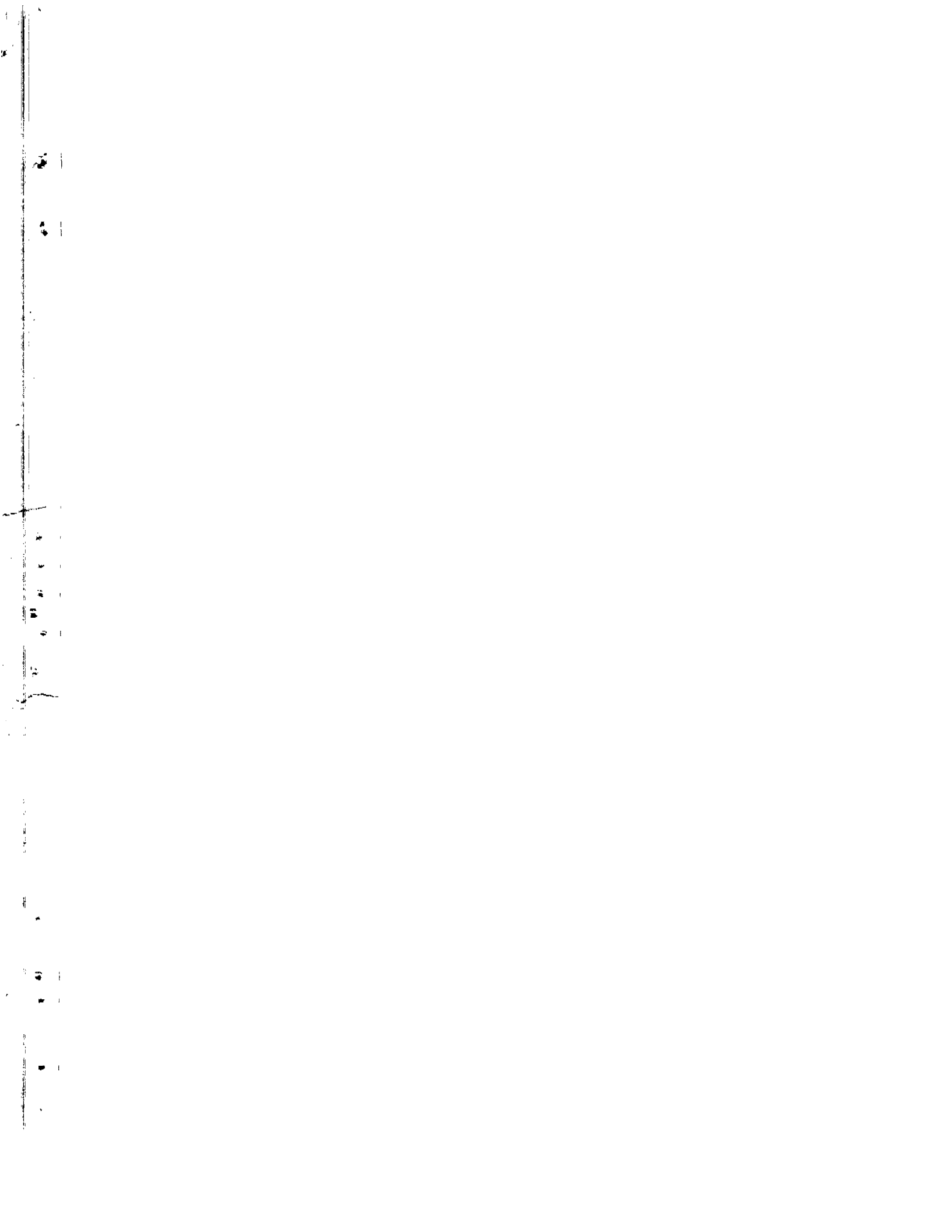
You shall report to the undersigned from time to time your activities as deputy.

This designation shall terminate upon revocation of same by the undersigned.

(Officer)

(Designation)

(Address)



REPUBLIC OF THE PHILIPPINES
PRESIDENTIAL COUNCIL FOR FOREST ECOSYSTEM
MANAGEMENT

PROFEM FORM NO. 5A

Presidential Council for Forest
Ecosystem Management

Registration Certificate

Name _____

Address _____

Date and Place of Registration _____

Areas Selected for Tree Planting (check box and specify location)

own lot/s _____

Leased lot/s _____

To be designated by the registrar

Signature of Registrant/Agent

Address of Agent

For Illiterate: _____

(If signed by agent, state relationship)

Certified By:

Right-Thumbmark

Registrar/Deputy

Signature



