

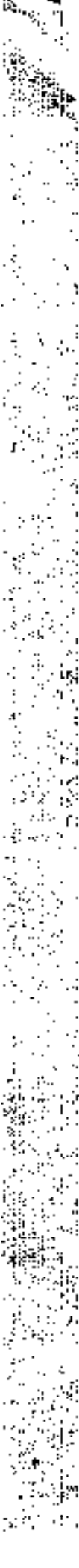
MEMORANDUM FOR THE RECORD

June 15, 1954

SUBJECT: [Illegible]

[Illegible text block containing the main body of the memorandum, including a description of the situation and any actions taken.]

[Illegible text block, likely a signature or distribution list.]



... and members and all other persons in the promotion of educational
... and general education in the promotion of educational
... and general education in the promotion of educational
... and general education in the promotion of educational

... and board and lodging...
... and board and lodging...
... and board and lodging...
... and board and lodging...

... and board and lodging...
... and board and lodging...

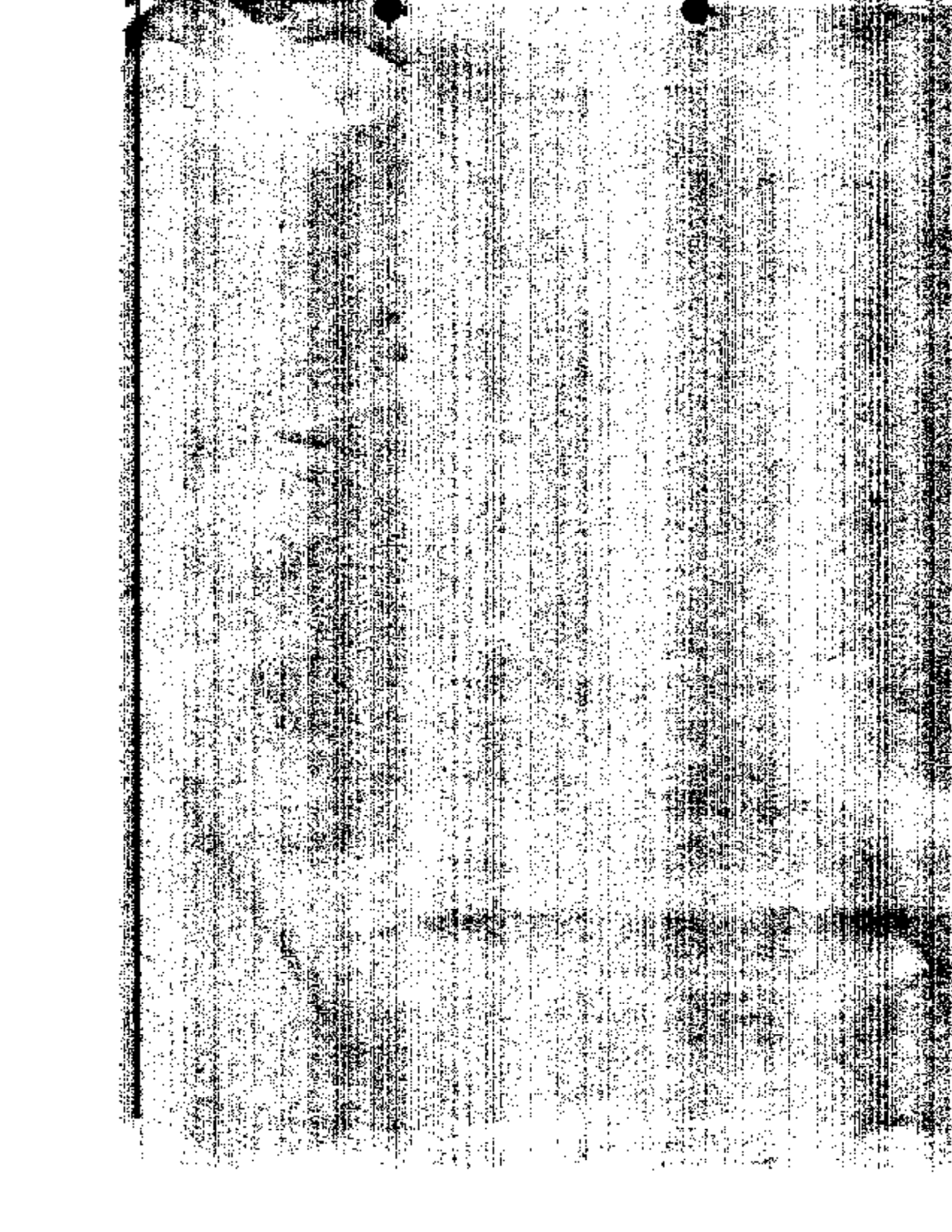
...
...
...

... (1-37)

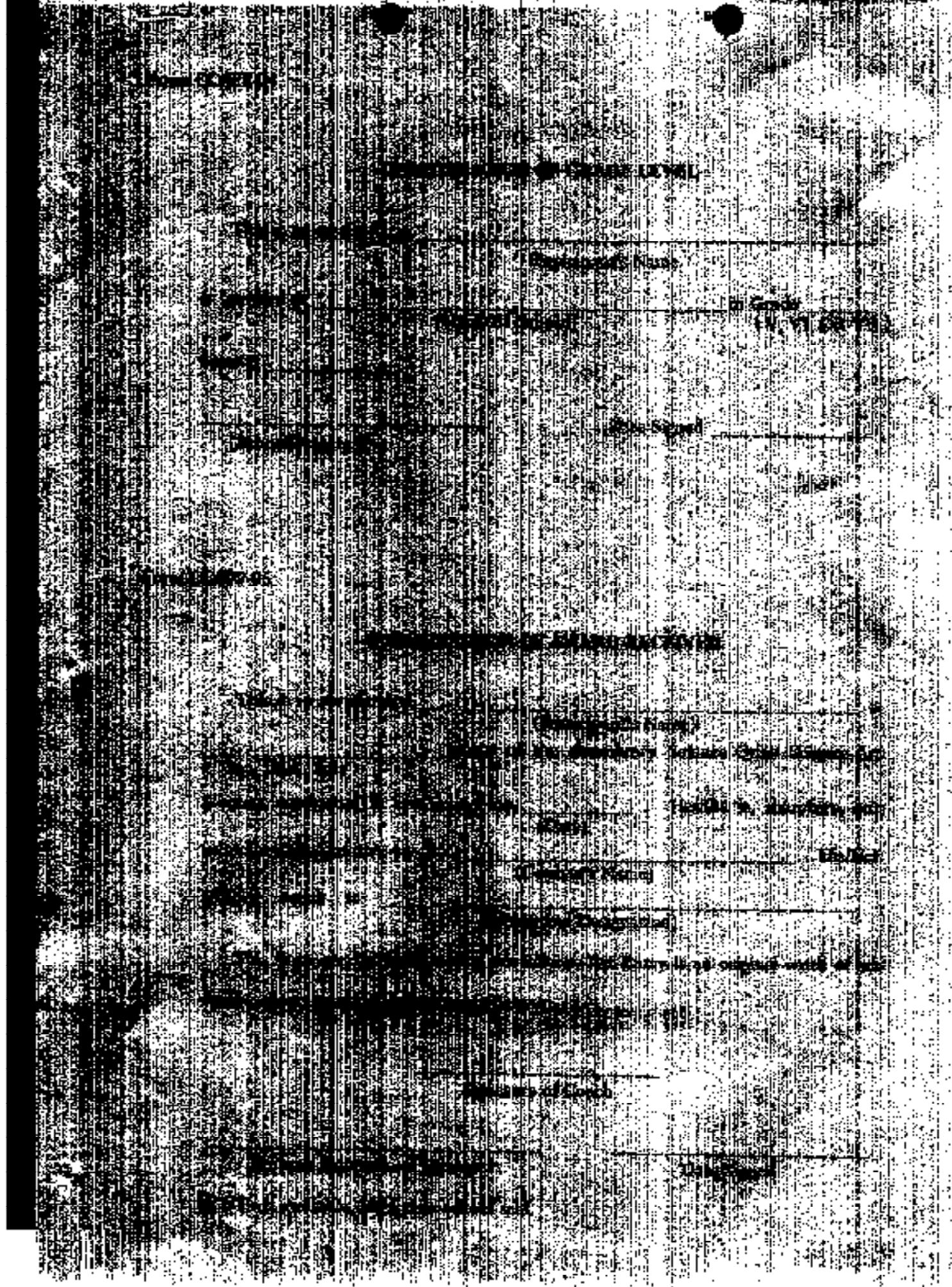
...
...
...
...
...













FEDERAL RESERVE FORM

THIS FORM IS TO BE USED BY MEMBERS OF THE FEDERAL RESERVE SYSTEM TO REPORT TO THE BOARD OF GOVERNORS OF THE FEDERAL RESERVE SYSTEM THE RESULTS OF THEIR INVESTIGATIONS OF THE ACTS AND OMISSIONS OF MEMBERS OF THE FEDERAL RESERVE SYSTEM WHICH MAY BE SUBJECT TO PENALTY UNDER THE FEDERAL RESERVE ACT.

REPORT MADE BY: DATE:

MISCELLANEOUS INFORMATION

NAME OF MEMBER:
ADDRESS:
CITY:

NAME OF MEMBER:
ADDRESS:
CITY:

NOTE: THIS FORM IS TO BE FILED WITH THE RECORDS OF THE BOARD OF GOVERNORS OF THE FEDERAL RESERVE SYSTEM. IT IS NOT TO BE DISTRIBUTED TO THE PUBLIC.





INSTRUCTIONS CONCERNING

OF THE

2025. ANNUAL REPORT ON THE ARTS

IN THE DISTRICT OF COLUMBIA

FOR THE YEAR 1964

OFFICE OF THE COMMISSIONER OF THE DISTRICT OF COLUMBIA

WASHINGTON, D. C. 20540

1964

1964

1964

1964

1964

1964

1964

1964

1964

1964

1964

1964

1964

1964

1964

1964

1964

1964



Professor Martin del Al. (1900-1970)

1. The first part of the book is devoted to a study of the history of the

of the country, and the second part to a study of the

of the country, and the second part to a study of the

of the country, and the second part to a study of the

of the country, and the second part to a study of the

of the country, and the second part to a study of the

of the country, and the second part to a study of the

of the country, and the second part to a study of the

of the country, and the second part to a study of the

of the country, and the second part to a study of the

of the country, and the second part to a study of the

of the country, and the second part to a study of the

of the country, and the second part to a study of the

of the country, and the second part to a study of the

of the country, and the second part to a study of the

1.4 Two year primary grade over a total of four years possible. Allow six total weeks and assign all

of the primary grade to the primary grade. Refer to the appendix on the science to help in

the selection of the primary grade. Refer to the appendix on the science to help in

the selection of the primary grade. Refer to the appendix on the science to help in

2.1. Programs, including but not limited to, reading, writing, and mathematics.

(How many years will be required to complete this?)

2.3. (Student may be young enough that the student of Josephson also

may be young enough that the student of Josephson also

F. Entry Requirements

Each entry must include the following:

1. A letter from the principal or superintendent of the school district.

2. A letter from the principal or superintendent of the school district.

3. A letter from the principal or superintendent of the school district.

4. A letter from the principal or superintendent of the school district.

5. A letter from the principal or superintendent of the school district.

6. A letter from the principal or superintendent of the school district.





APPLICATION FORMS ARE AVAILABLE AT THE FOLLOWING OFFICES:

GALILEO CENTER FOR SCIENCE PROMOTION PROGRAM
Center for Science Promotion

Science Promotion Institute
(Formerly Science Promotion Institute)
Houston, Texas, 77030
Tel: 832-4056

EXETER (PUBLISHERS), INCORPORATED

540 P. Faura St., Manila
Tel # 5213501

GALILEO SERVICE SPARRING

POST, DECS. & PARAREGIONAL OFFICES

FOR PARTICULARS, SEE OR CALL MALOU TANVAG OR LEAH LESGUES
AT THE CONFERENCE SECRETARIAT

SECRETARIAT

Department of Science and Technology

