

Republika ng Pilipinas  
(Republic of the Philippines)  
MINISTERI NG EDUKASYON, KULTURA AT ISPORTS)  
(MINISTRY OF EDUCATION, CULTURE AND SPORTS)  
Manila

September 24, 1985

MECS MEMORANDUM  
No. 141, s. 1985

UNIFORM FOR MECS MEDICAL, DENTAL AND NURSING STAFF  
MAINTENANCE PERSONNEL, MUSLIM LADY TEACHERS;  
AND GUIDELINE MODIFICATIONS IN THE USE  
OF I.D. UNIFORM

To: Assistant Secretaries  
Bureau Directors  
Regional Directors  
Cultural Agency Directors  
Chief of Service and Heads of Units/Centers  
School Superintendents  
Vocational School Superintendents/Administrators

1. Feedback from the Central Office and field personnel with regard to the prescribed MECS uniform, as contained in MECS Memorandum No. 180, s. 1984, showed the need for a revision of some guidelines.

2. Starting October 15, 1985, the following modified guidelines shall be in effect:

a. MECS personnel need not wear their uniform on Fridays; however, the use of I.D. shall be observed at all times.

b. The following schedule of colors shall be strictly enforced:

Monday and Thursday	- Beige
Tuesday	- Blue
Wednesday	- Green (female) White (male)

c. Expectant mothers and those in mourning may be exempted from wearing the standard uniform.

d. Employees on detail, however, are required.

3. The MECS medical, dental and nursing staff shall wear the uniform as sketched in inclosures A and B.

4. With the exception of janitors who are performing actual janitorial functions, all maintenance personnel (motor pool technicians, electricians, carpenters and office equipment mechanics) may wear the prescribed MECS uniform only when not performing any maintenance job; otherwise, the following shall be observed, taking into account the schedule of colors in par. 1 (b):

T-shirt in beige, light blue or light green with the letters MECS printed in bold at the back and family name in front.



ch



5. Conformably to a request of Muslim lady teachers, this Office has also approved the modified uniform as sketched in inclosure C. The schedule of colors, however, is slightly modified as follows:

Monday and Wednesday	- Beige
Tuesday and Thursday	- Blue
Friday	- Free Day

6. Dissemination of this information is highly desired.

(SGD.) JAIME C. LAYA  
Minister

Incls.:

As stated

Reference:

MECS Memorandum: (No. 180, s. 1984)

Allotment: 1-2--(D.O. 1-76)

To be indicated in the Perpetual Index  
under the following subjects:

AMENDMENT  
EMPLOYEES  
RULES & REGULATIONS  
TEACHERS  
UNIFORM





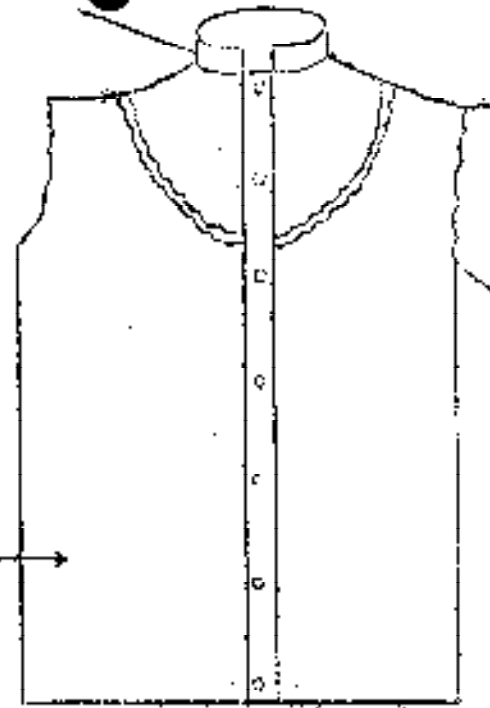
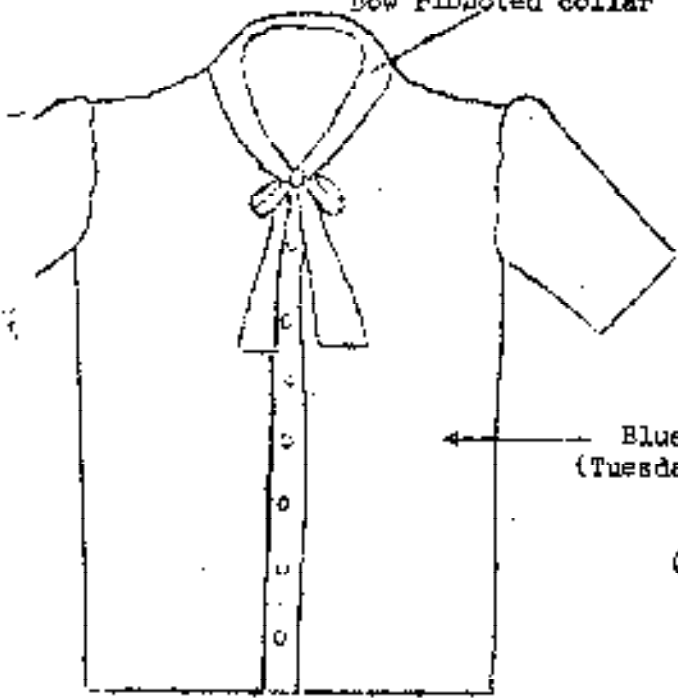




(Inclosure A)

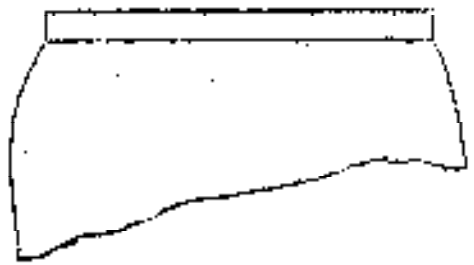
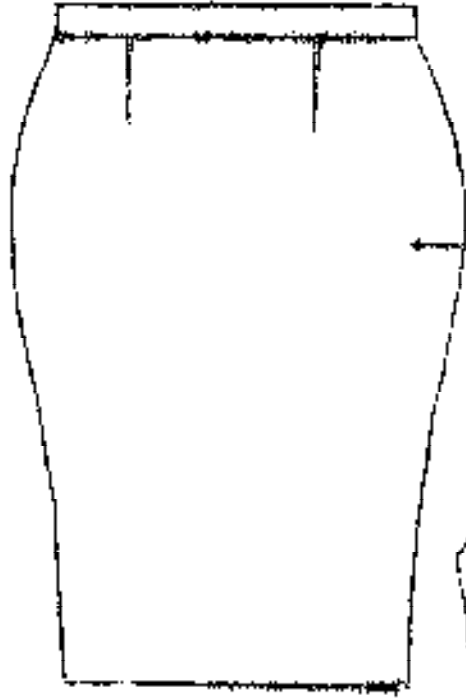
Low ribbed collar

China collar

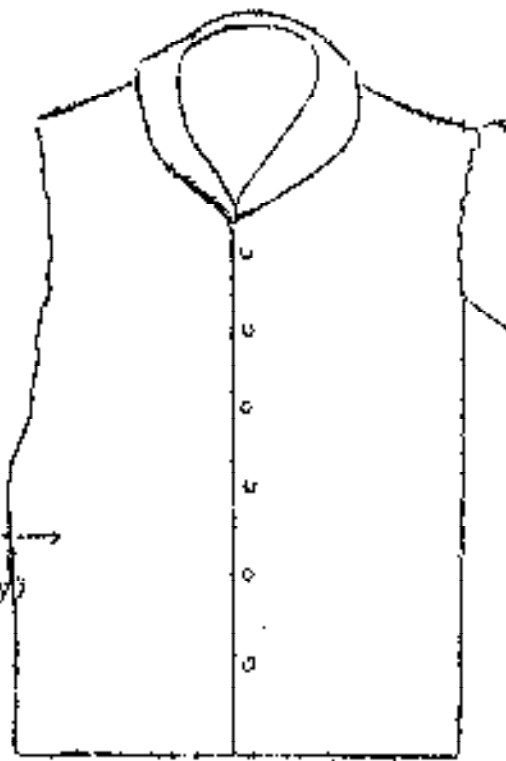
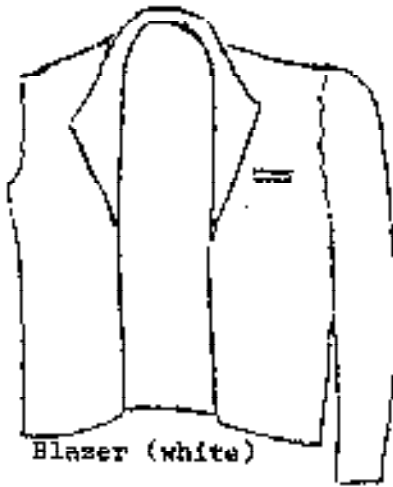


Blue  
(Tuesday)

Green  
(Wednesday)

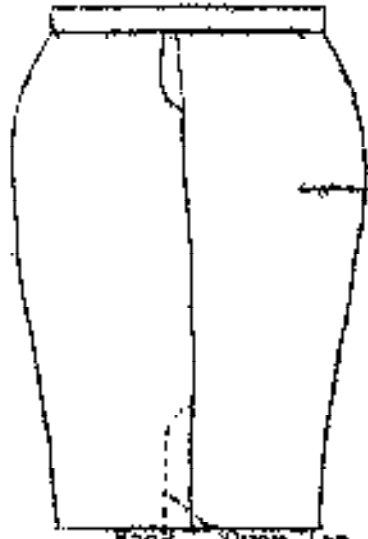


Pencil Cut  
Skirt (white)

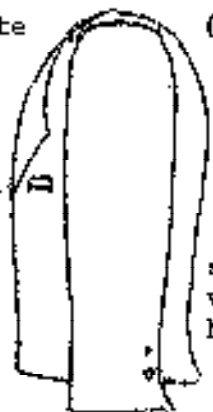


Blazer (white)

Beige  
(Monday &  
Thursday)

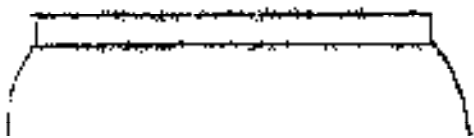


White

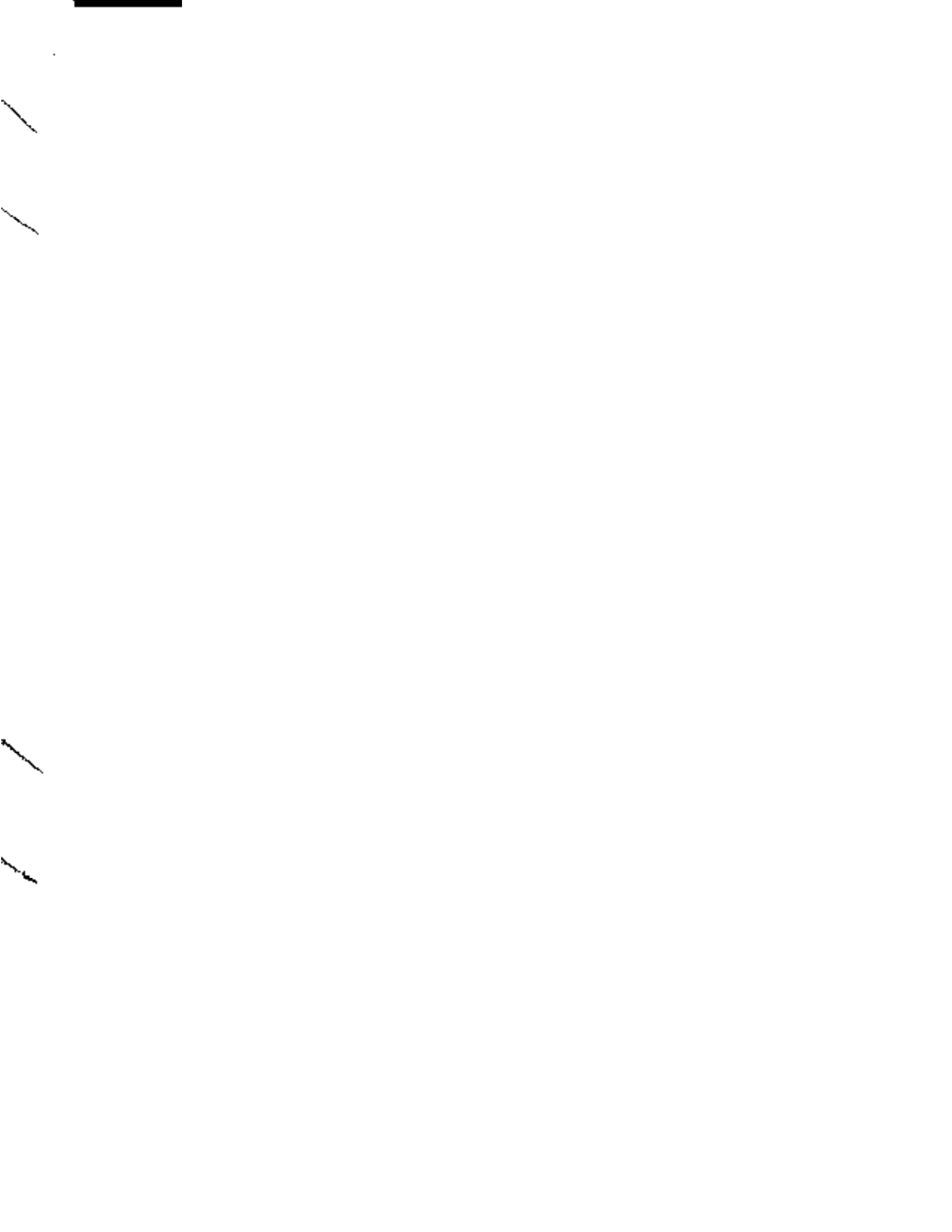


side  
view  
blazer

Back Over Lap slit



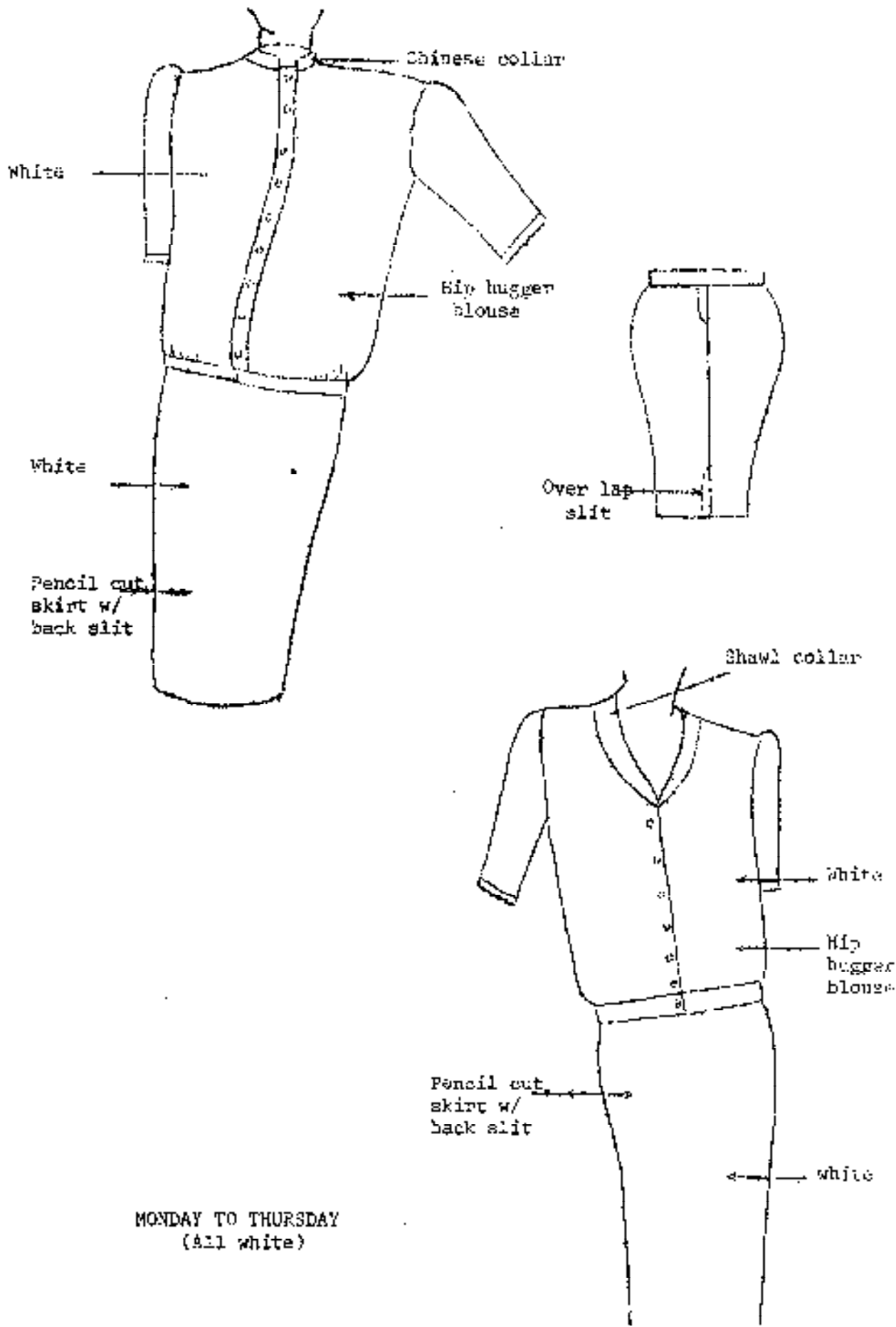






(Inclosure B)

NURSE UNIFORM



MONDAY TO THURSDAY  
(All white)

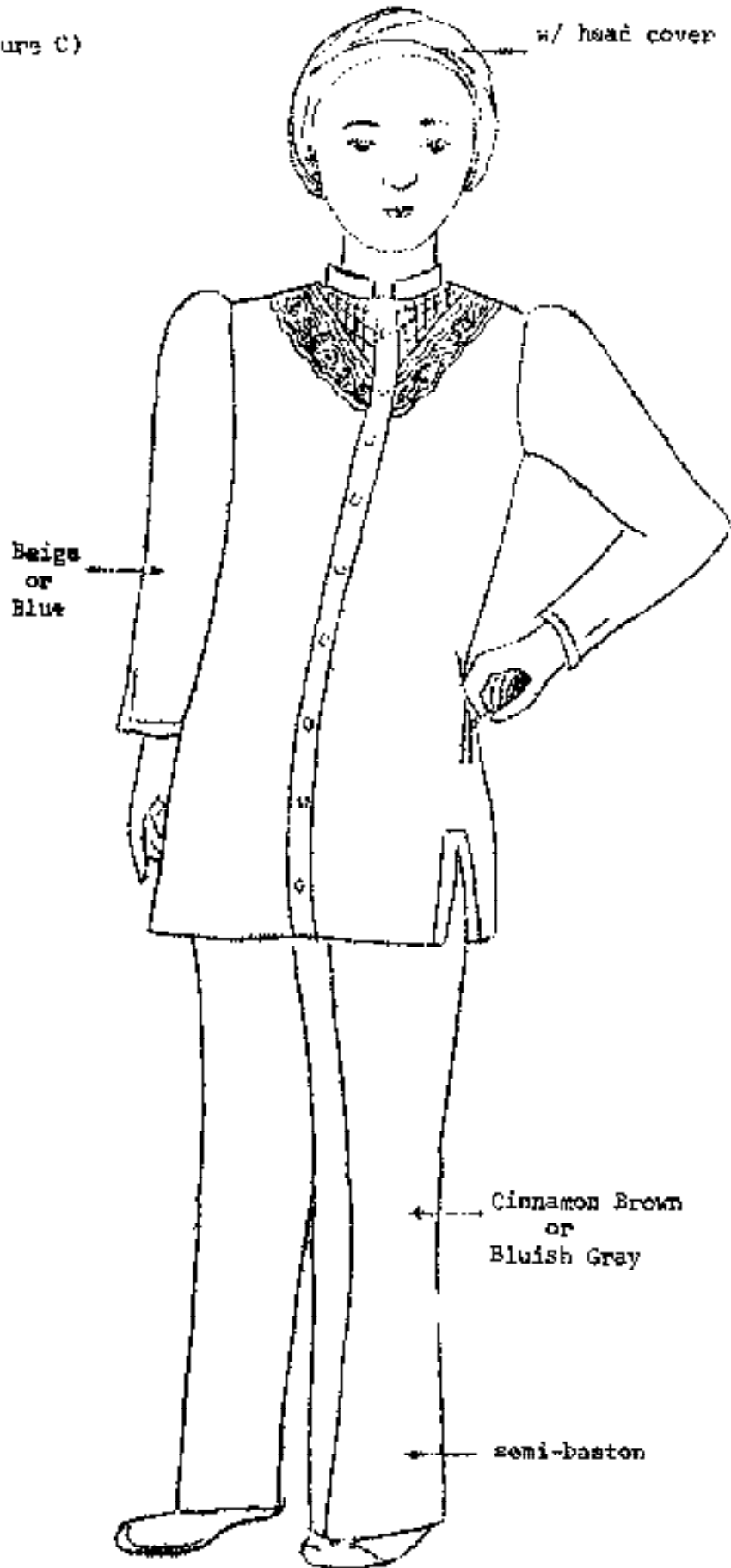








(Inclosure C)





\_\_\_\_\_

