

Republika ng Pilipinas
(Republic of the Philippines)
MINISTERI NG EDUKASYON AT KULTURA
(MINISTRY OF EDUCATION AND CULTURE)
Maynila

February 1, 1980

MEC M E M O R A N D U M
No. 29, s. 1980

UNIFORM FOR TEACHERS/EMPLOYEES

To: Bureau Directors
Cultural Agency Directors
Regional Directors
Chiefs of Services and Heads of Units
Schools Superintendents

1. Pursuant to the General Appropriations Act for 1980, Batas Pambansa Blg. 40, the uniform/clothing allowance for teachers/employees at not more than ₱150 each per annum shall be given in kind, the quality of the clothing material, cut and style to be prescribed by the Minister of Education and Culture.

2. On the basis of the recommendation of a Committee created for the purpose, this Office hereby prescribes the following as the uniform for all teachers/employees, this Ministry, during the current year.

For Females

- a. Material: Alfa Superfine Gabardine
Alfa Parissienne Evelet
- b. Color: Skirts - Olive Green and Navy Blue
Blouses - Sea Green and Old Rose
- c. Style: Conventional cut 3 pieces uniform composed of
2 blouses, 2 skirts, 2 chaleco
(Note: As shown in the inclosed sketch
marked A and B)

For Males

- a. Bush Jacket with pant
Color: Blue Grey
Alfa Superfine Gabardine

b. Alfa Polo Barong (2 pieces).

Color: Beige with embroidered MEC logo on upper left side (Note: As shown in the sketch marked C)

3. In view of the expected increase in the cost of commodities in the ensuing months, it is suggested that the clothing materials prescribed herein be acquired without delay. Requisitions therefore should be sent immediately to:

Alfa Integrated Textile Mills
1541 N.W. del Pilar corner
Cuarteles, Ermita, Manila

the sole manufacturer and distributor. Payment of materials requisitioned will be made in this Office.

4. For the present, orders for the clothing material should be made on the basis of ₱75 per teacher, which is the amount available for the purpose. The field will be duly advised as soon as the balance of the appropriation is released.

5. Inclosed are sketches showing the cut, style and design of the uniforms, which shall be the same for all teachers/employees as required by law.

(SGD.) ONOFRE D. CORPUZ
Minister of Education and Culture

Incls.:
As stated

Reference:
Department Order: No. 7, s. 1978

Allotment: 1-2--(D.O. 1-76)

To be indicated in the Perpetual Index
under the following subjects:

APPROPRIATIONS
EMPLOYEES
LEGISLATION
RULES & REGULATIONS

RULES & REGULATIONS
TEACHERS
UNIFORMS

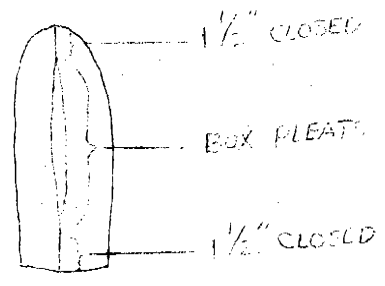
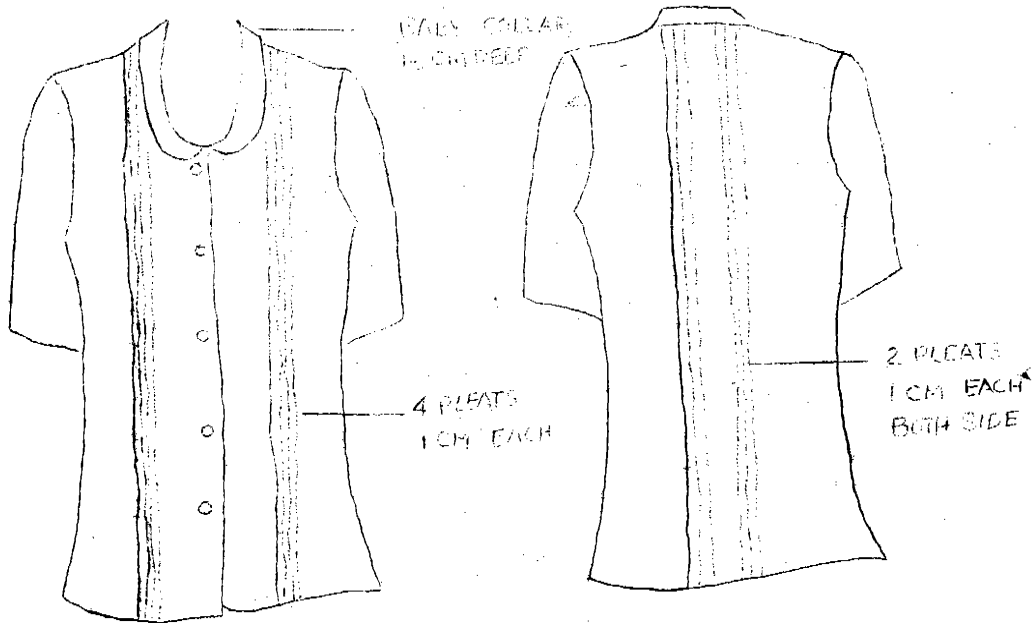


CHALECO y SKIRT

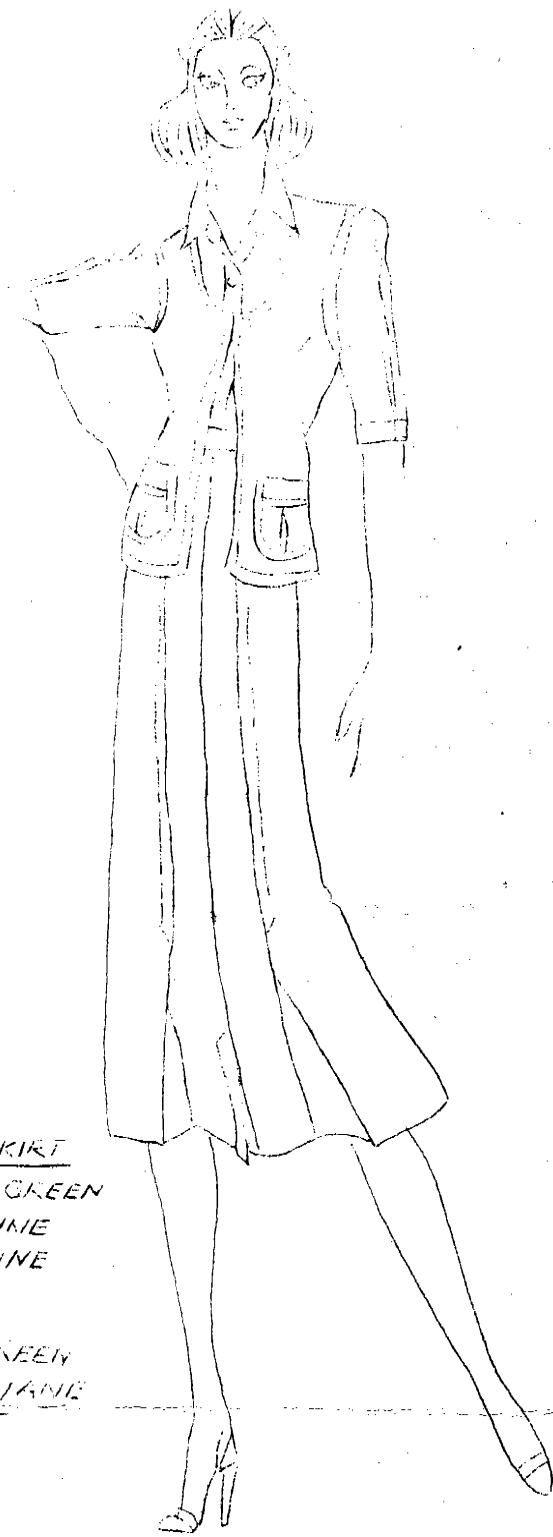
COLOR: NAVY BLUE
MAT: SUPERFINE
GABARDINE

FLOUSE

COLOR: OLD ROSE
MAT: PARISIENNE
EYELET

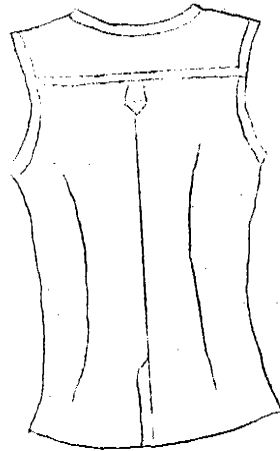
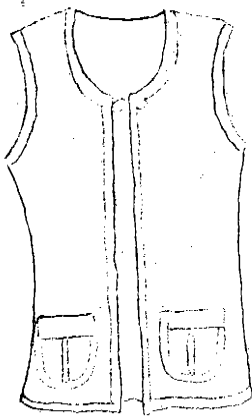
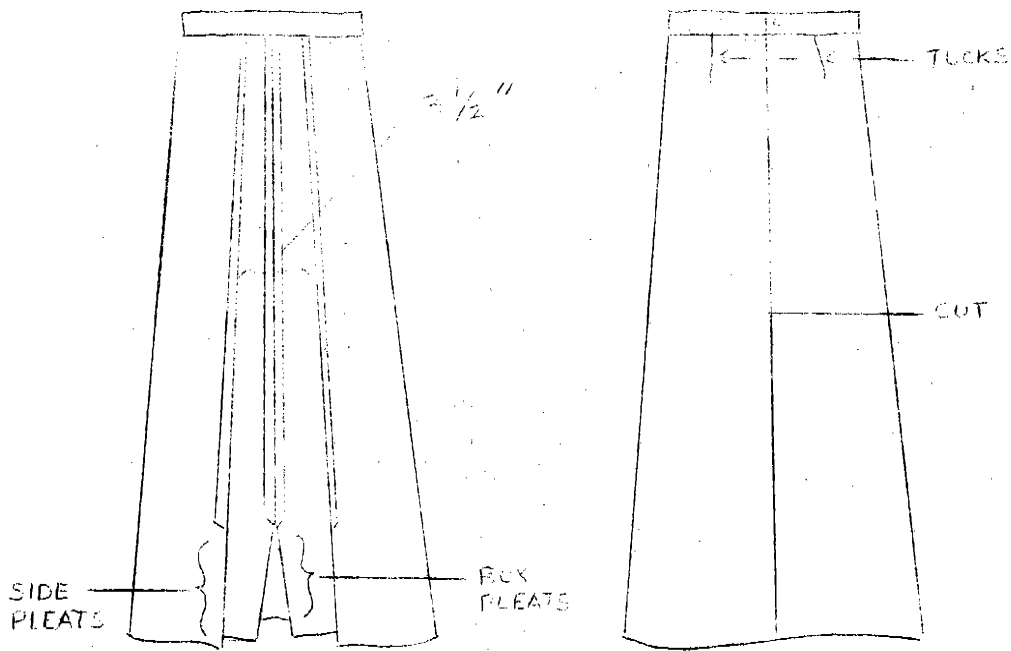


COLOR: OLD ROSE

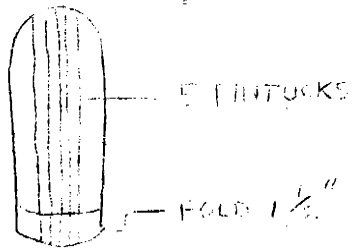
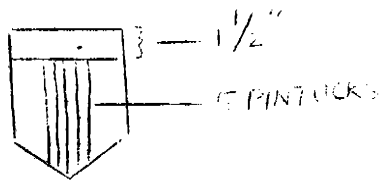
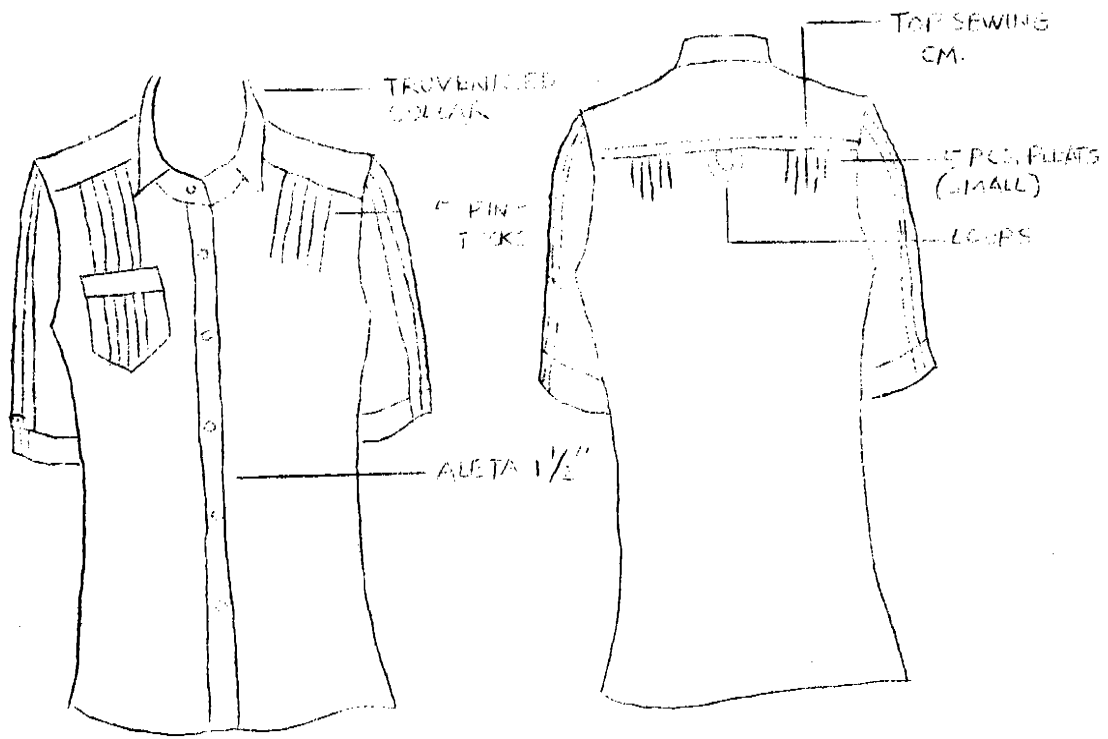


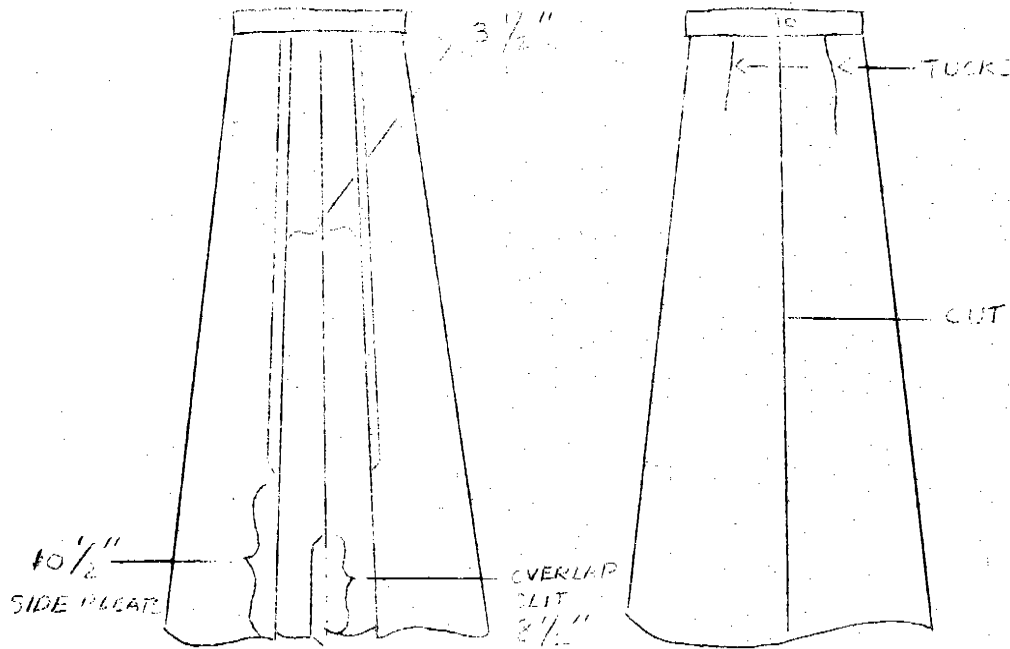
LO & SKIRT
BOTTLE GREEN
SUPER FINE
TABARDINE

SE
SEA GREEN
PARISSIANE
EYELET

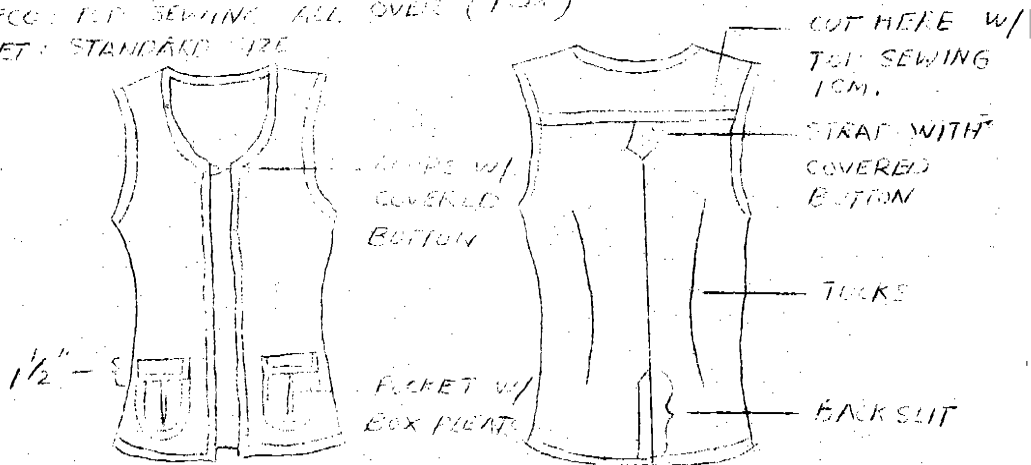


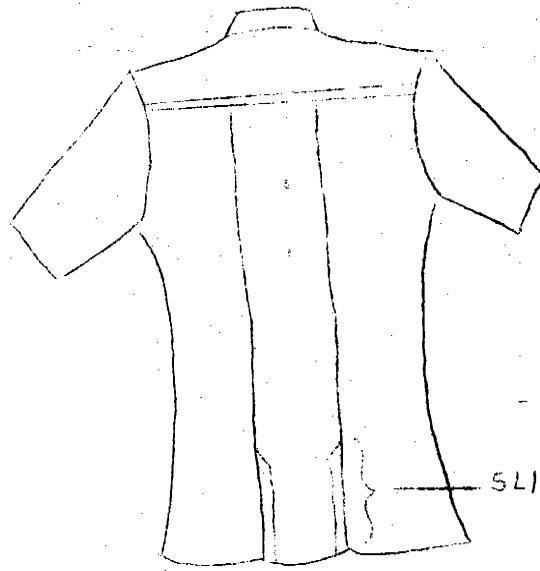
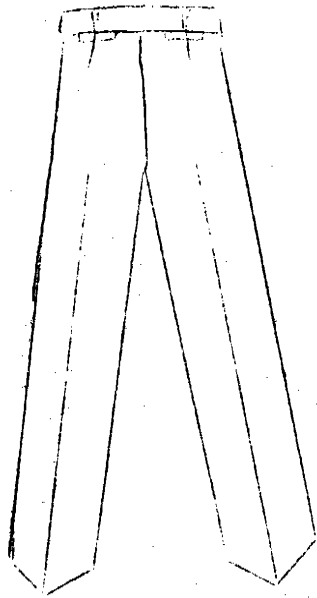
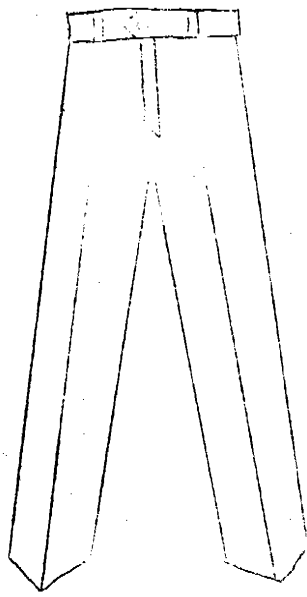
COLOR: NAVY BLUE





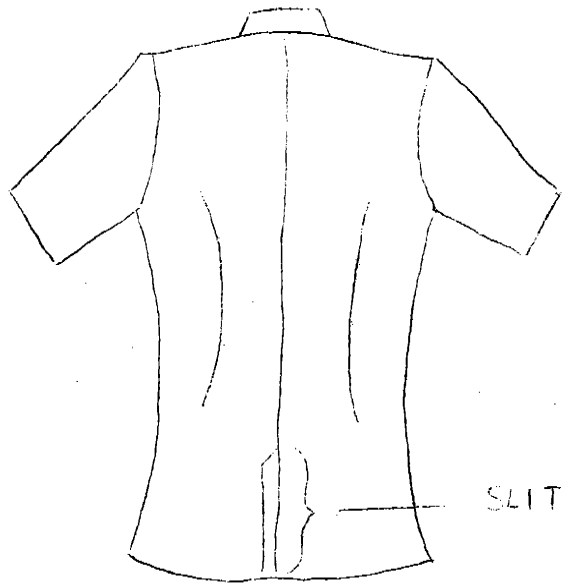
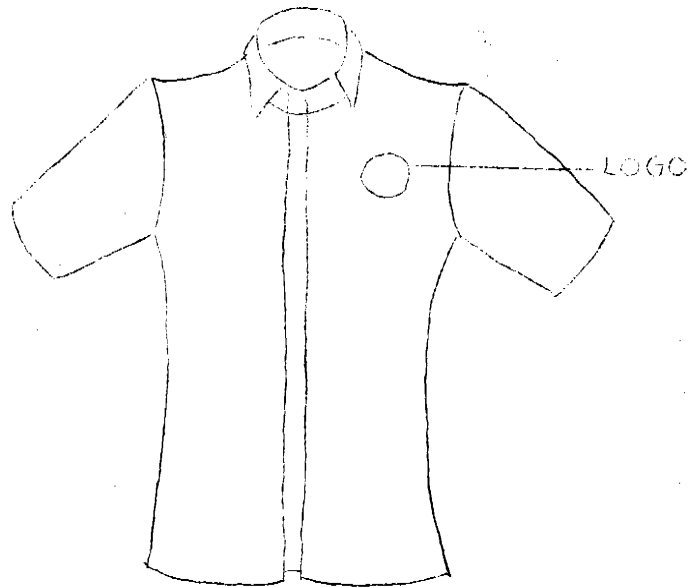
CHINESE TOP SEWING ALL OVER (1944)
POCKET: STANDARD SIZE





SLIT

BLUE GREY
SUPER FINE WEAVING



BEIGE ALFA BARONE WITH MEC LOGO